

glassPOST



CARVART's Portable series consists of two unique options, both of which cater to flexible, open spaces that require adaptable dividers, enclosures and storage components. The glassCUBE and glassPOST are highly flexible, easy to install and maintain a minimalist aesthetic. These space dividers and enclosures are free-standing and demountable, which facilitates creating spaces cohesive in both design and function. Additionally, these products are fully compatible with CARVART's Slim and Simple Office Fronts solutions.

Specifications

glassPOST

CARVART's glassPOST can serve as both as a ceiling-mounted spatial divider, as well as a wall-mounted storage or display wall. The system is perfect for dynamic spaces subject to constant changes, as it does not require any architectural anchoring. Like the glassCUBE, the glassPOST has a wide variety of accessory options, all easy to install and remove by the end-user. Like the glassCUBE, accessories include shelves, cabinets, drawers and markerboards.

VALUE-ADDED BENEFITS

- Multiple attachment methods: ceiling, extension, wall mounts
- Flexible
- Easy installation with minimal architectural anchoring required
- Accommodates all needs: various accessory options
- System durability and long-term integrity
- Turnkey project services

FACILITY DESIGN APPLICATIONS

Storage walls, work stations, space dividers, open office partitions, flexible and truly demountable fronts.

CONFIGURATIONS

Straight fronts, corners, desk dividers, ceiling mount, extension optional, wall mounted.

FUNCTION

Demountable, flexible accessories.

GLASS TYPES

Refer to CARVART's Glass Collection

GLASS THICKNESS —

Refer to local code and structural requirements
Accommodates 3/8" nominal up to 9/16" nominal.

HARDWARE MATERIALS/FINISHES —

Refer to Finish Chart

Standard Silver, Black and White Powder-coated

WIDTHS — OVERALL MINIMUM/ MAXIMUM RANGE (inches):

Standard width: 35-7/16"

Max width: 53-1/8"

(custom sizes available upon request and depending on engineering limits).

HEIGHT LIMITS — (inches):

Standard height intervals are measured from finish floor to finish ceiling; custom sizes are available upon request.

glassPOST > Ceiling Mount: 90", 96", 102", 108", 114", 120"

glassPOST > Ceiling Mount with Extension: 90", 96", 102", 108", 114", 120", 126", 132", 138", 144"

glassPOST > Wall Mount:

-90", 96", 102", 108", 114", 120"

(Per page 12)

Extension: Extensions cut to length. Option to order oversized or modified in field.

MOUNTING FASTENERS

Standard glassPOST>Ceiling Mount:

No architectural anchors/fasteners for stable ceiling substrates. Installers to determine if ceiling substrate requires fasteners.

glassPOST>Ceiling Mount with Extension:

Architectural anchors/fasteners and additional bracing may be required based on drop ceiling configuration or substrate material.

glassPOST>Wall Mount:

Architectural anchors/fasteners required per installer recommendation.

WEIGHT & STRUCTURAL LOADS —

Consult local engineer for structural codes and requirements

Refer to CARVART for technical consultation.

ADD-ON DESIGN OPTIONS —

Per specification and upcharges apply

Shelf, surface bracket, drawer, cabinet, marker board, accessories

CUSTOMIZATION

Heights, configurations and post spacing. Glass and hardware finishes.

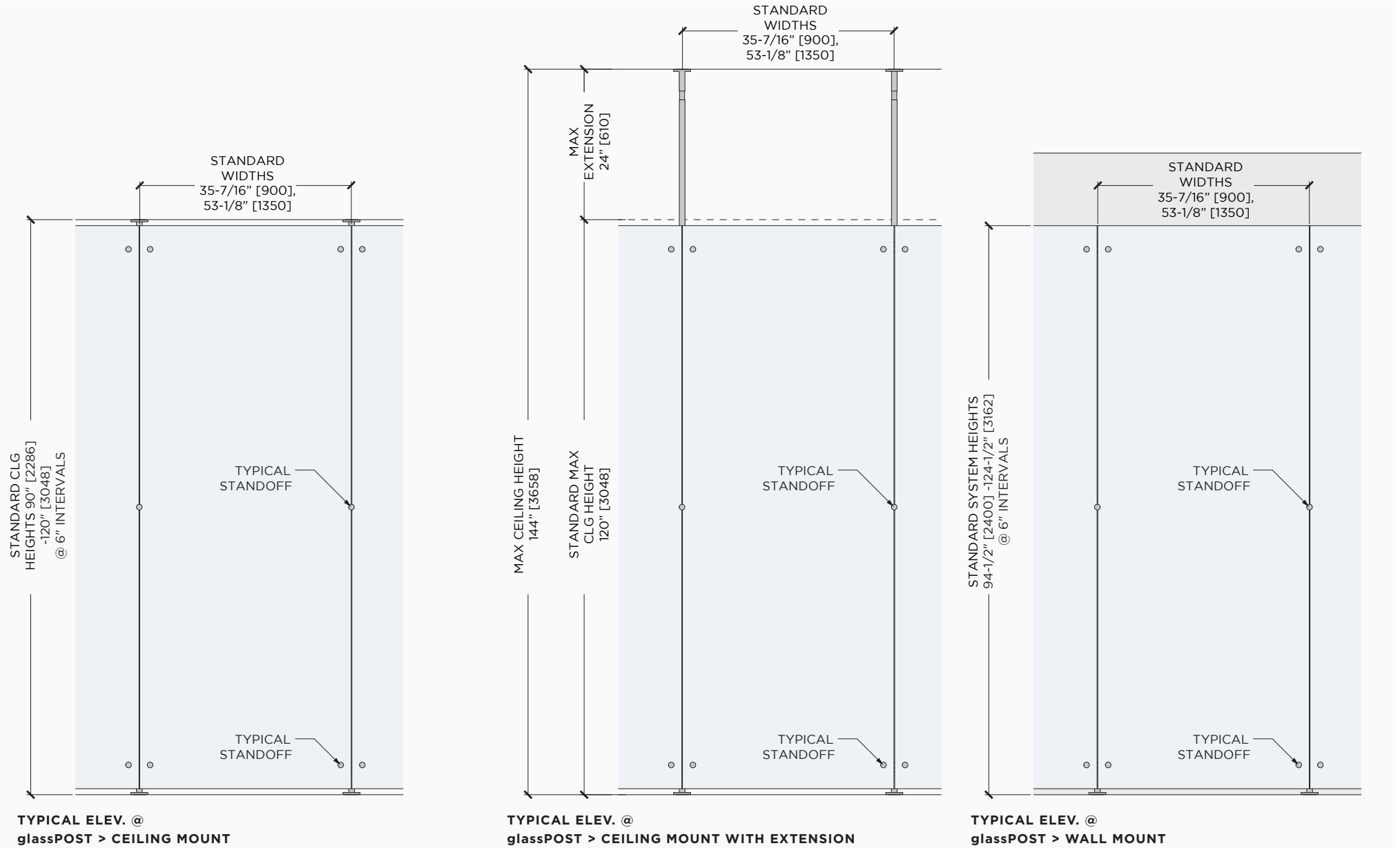
INSTALLATION

Easy-to-install machine screws, dry-glazed spider fittings for glass mounting.

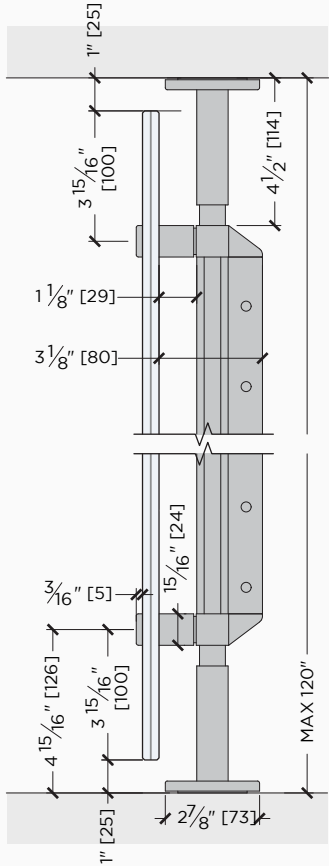
Requires trained and competent glazing or carpentry industry professionals. Installation instructions, assistance and training available at time of order.

For more info, contact CARVART
Sales Advisory Team at quotes@carvart.com
or call us at 212 675 0030.

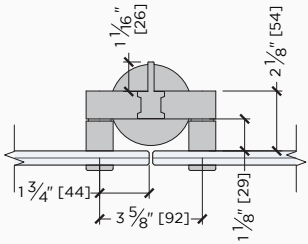
Details: Elevations



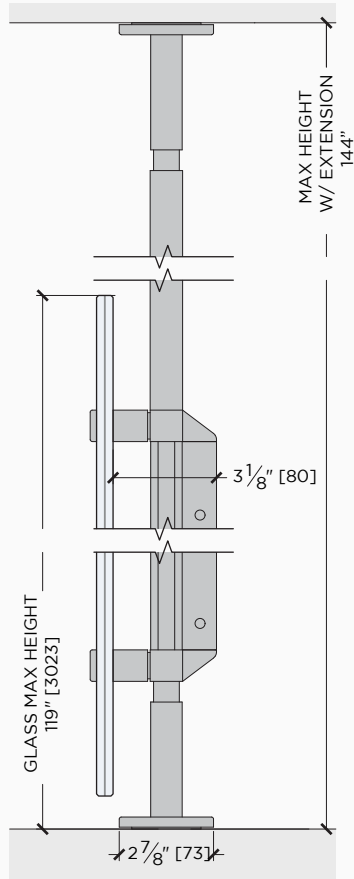
Options: Vertical sections



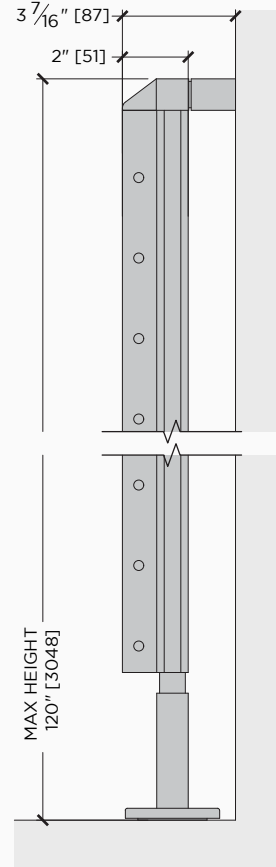
TYPICAL VERTICAL SECTION



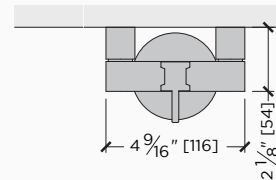
TYPICAL HORIZONTAL SECTION @
glassPOST > CEILING MOUNT STD. &
EXTENSION
(ACCESSORY MOUNTING ONLY)



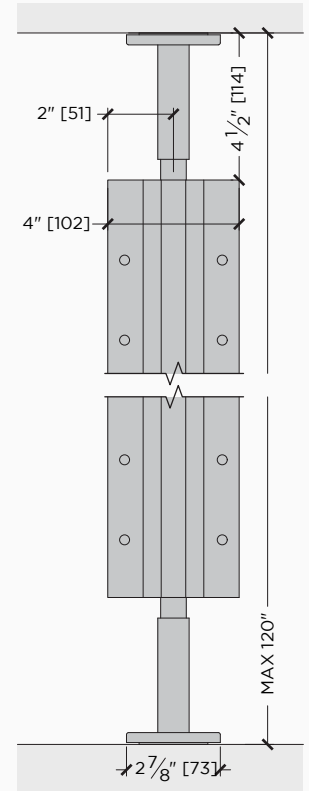
VERTICAL SECTION @
POST WITH EXTENSION



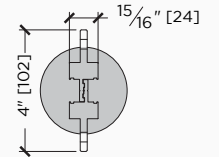
VERTICAL SECTION



HORIZONTAL SECTION @
WALL MOUNTED



VERTICAL SECTION @
DOUBLE SIDED VERTICAL POST



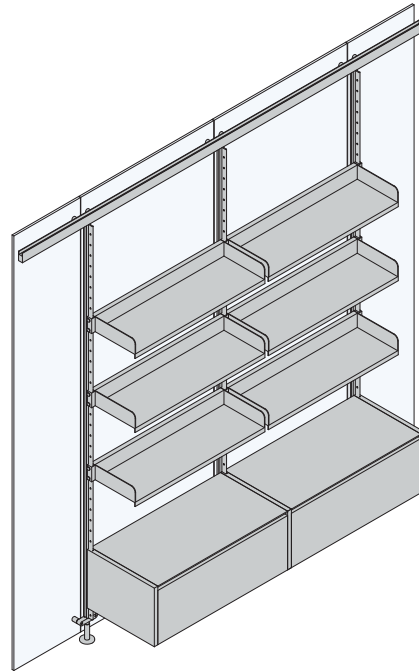
HORIZONTAL SECTION @
DOUBLE-SIDED glassPOST
(ACCESSORY MOUNTING ONLY)

Features: Accessories

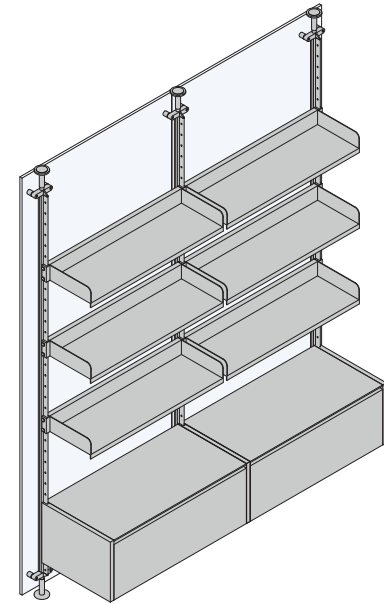
ACCESSORIES

Designed as a modular system, CARVART's Portable products are compatible with a variety of CARVART accessories. This allows architects and designers to personalize any space with shelves, cabinets, drawers, work-surfaces and markerboards.

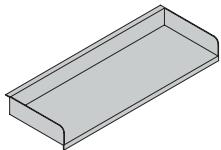
The glassCUBE and glassPOST are two of CARVART's most adaptable products, as they guarantee post-installation adjustability as well as a wide choice of options for end-user customization. These accessories are also compatible with CARVART Office Fronts.



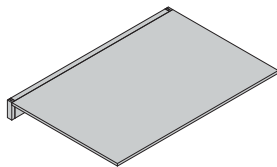
glassCUBE



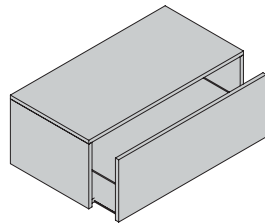
glassPOST



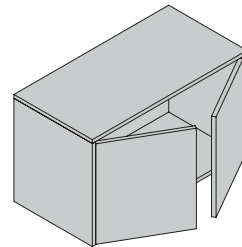
1 Shelf
Available in 35-7/16" [900]
53-1/8" [1350]



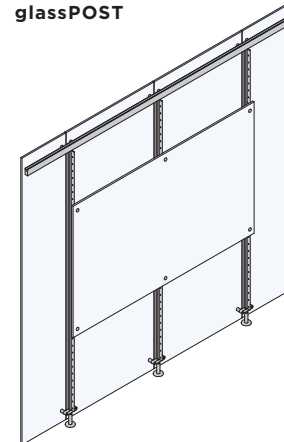
2 Workstation bracket
Available in 35-7/16" [900]
(Surface not supplied by CARVART)



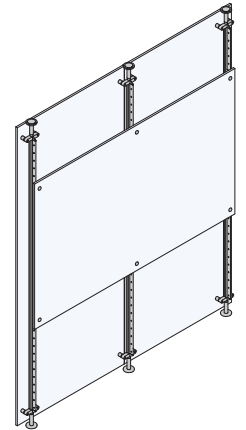
3 Drawer
Available in 35-7/16" [900]



4 Cabinet
Available in 35-7/16" [900]



5 Board

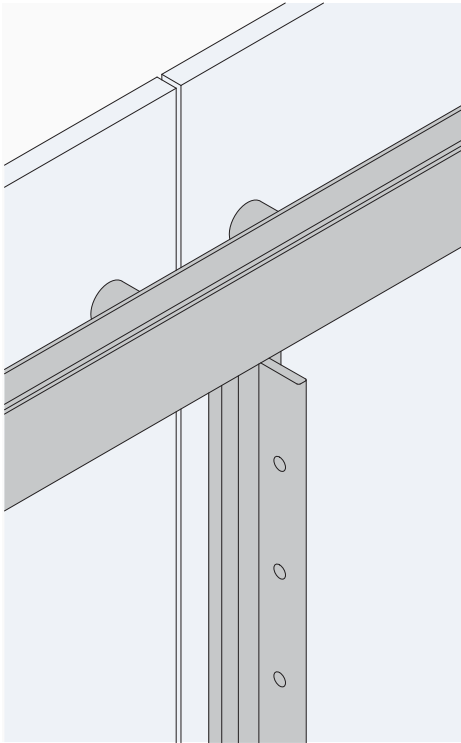


Features: Multiple attachment types

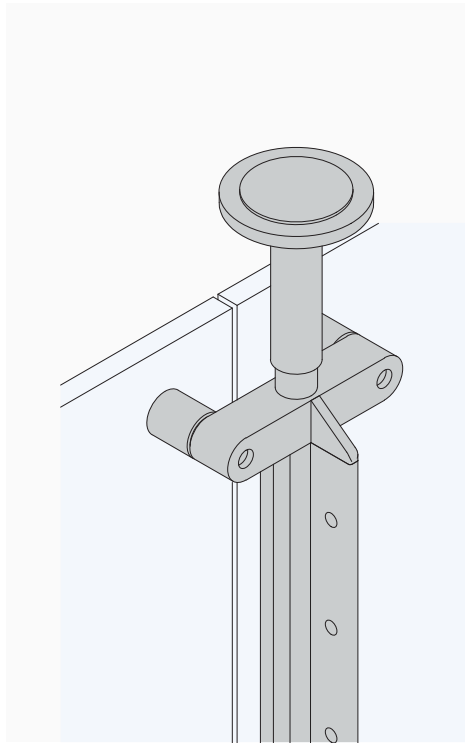
ATTACHMENT METHODS

CARVART's Portable series has a wide variety of attachment methods: ceiling-mounted (2ft. vertical extension optional), wall-mounted and free-standing. Except for certain glassCUBE configurations and the wall-mounted glassPOST, no architectural anchoring is required for these truly demountable and reusable systems.

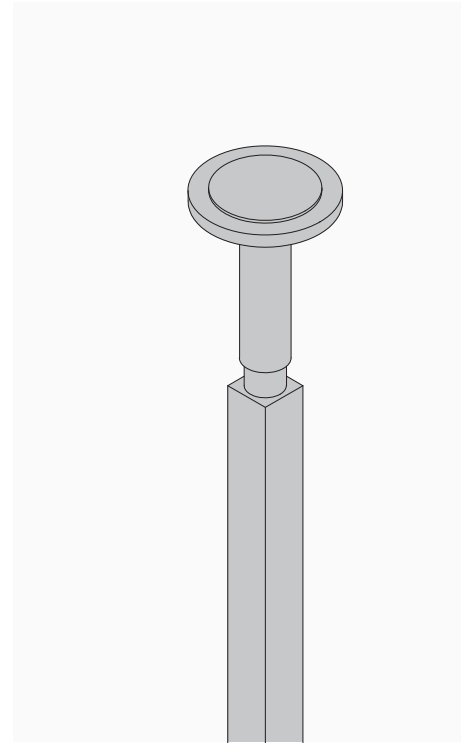
The glassCUBE and glassPOST are not only adaptable to unique spatial conditions, but also perfect for dynamic flex-spaces.



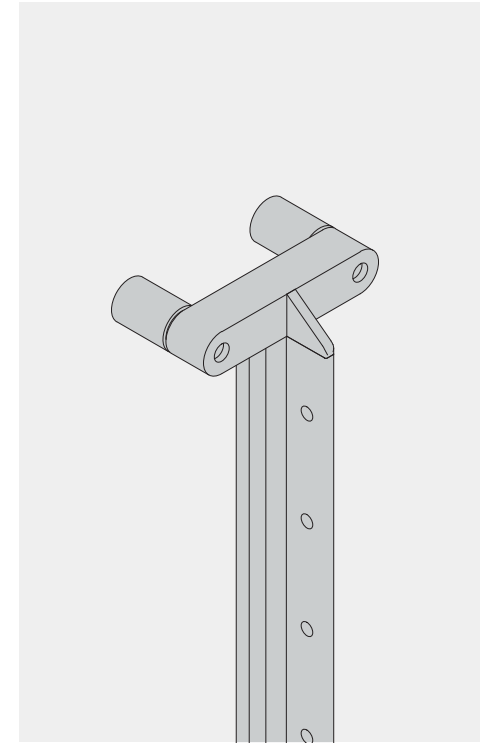
glassCUBE > FREE STANDING



glassPOST > CEILING MOUNT



glassPOST > CEILING MOUNT
WITH EXTENSION

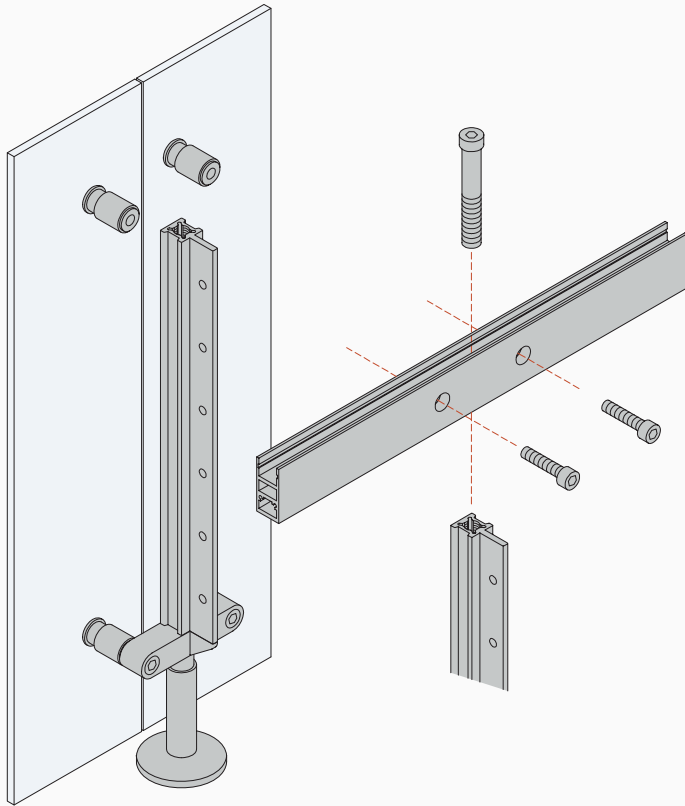


glassPOST > WALL MOUNT

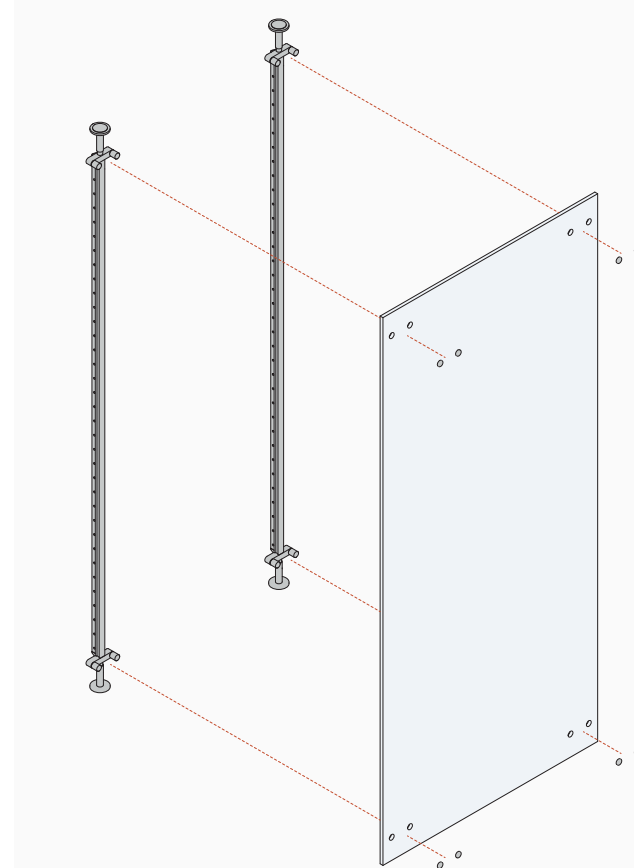
Features: Ease of install

DEMOUNTABLE + EASE OF INSTALL

The glassCUBE and glassPOST hardware allows for fast and efficient installation. With multiple mounting options and post-installation vertical adjustability of +/- 7/16", this system can easily accommodate various environments and conditions. No architectural anchoring is required for CARVART Portable products, making them a viable option for navigating around existing mechanical and plumbing systems.



glassCUBE



glassPOST

Overview

CURATED HARDWARE FINISHES




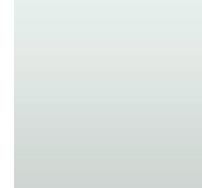


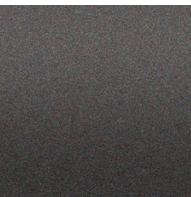
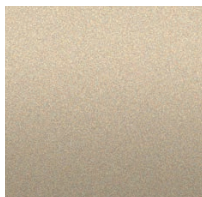

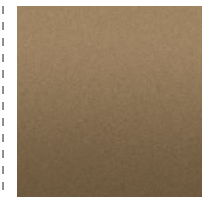

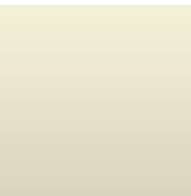
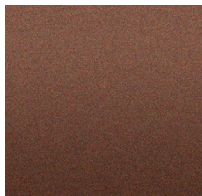
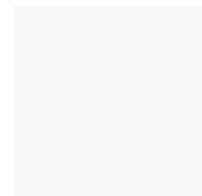
CARVART's team and resources bring an innovative spirit and celebrates the creative process. Our strength is solving design challenges with sophisticated detailing, engineering and a cohesive blend of materials and hardware finishes across CARVART's minimalist interior and exterior architectural products and systems.

CARVART empowers the creative process by curating hardware system finishes from natural anodized aluminum with polish, satin, brushed, antiqued, blackened and other elegant techniques as well as the option to select any RAL color for powder coating.

GUIDELINES

- Hardware finishes appropriate for each system may vary in color, type and other properties.
- Explore finish options below and consult with a CARVART team member for custom capabilities.

visit carvart.com/materials

<p>Black Powder Coat Aluminum</p> 	<p>Midnight Powder Coat Aluminum</p> 	<p>Warm Grey Powder Coat Aluminum</p> 	<p>Satin Anodized Aluminum</p> 	<p>Blackened Aluminum</p> 
<p>White Powder Coat Aluminum</p> 	<p>Charcoal Powder Coat Aluminum</p> 	<p>Champagne Powder Coat Aluminum</p> 	<p>Brushed "Stinless" Aluminum</p> 	<p>Bronze Heavy Aluminum</p> 
<p>Metallic Silver Powder Coat Aluminum</p> 	<p>Light Grey Powder Coat Aluminum</p> 	<p>Terra Cotta Powder Coat Aluminum</p> 	<p>Polished Aluminum</p> 	

Overview

CURATED MATERIALS

CARVART's team and resources bring an innovative spirit and celebrates the creative process. Our strength is solving design challenges with sophisticated detailing, engineering and a cohesive blend of materials across CARVART's minimalist interior and exterior architectural products and hardware systems.

CARVART empowers the creative process by curating an inspiring material offering of glass, stone, wood, cHPL, metals, meshes, textiles and more with patterns, textures, finishes and levels of transparency and reflectivity that allows creators to accurately envision their design.

GUIDELINES

- Materials appropriate for each system vary in size, thickness, type, weight and other associated properties.
- Explore each material for inspiration at carvart.com/materials and see full material palettes.
- Due to the various ways of creating with these materials, please consult a CARVART team member to ensure your material is best suited for a specific architectural product application.
- Materials can be integrated into CARVART's architectural system or available in sheets.

visit carvart.com/materials

GLASS



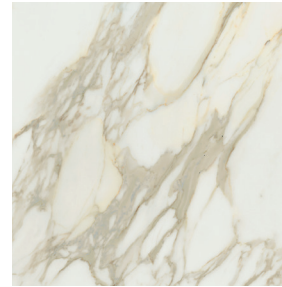
Color
Translucency & Reflectivity
Interlayer
Pattern & Texture
CARVART Digital Experience

cHPL



Color
Woodgrain
Rock
Metal
Polaris

STONE



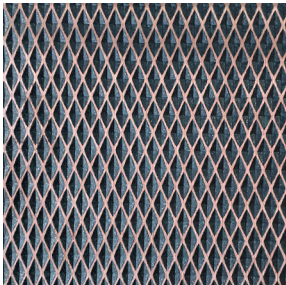
Porcelain

WOOD



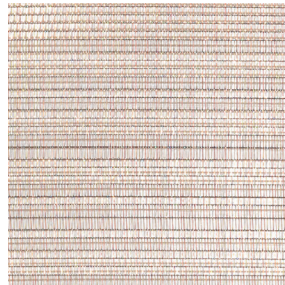
Natural Veneer
Reconstituted Veneer
Perforation Patterns

METAL



Copper
Plated
Powder Coated

MESH



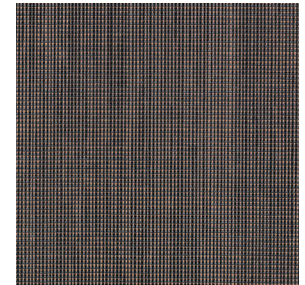
Glass Interlayer
Wire Mesh

TEXTILE



Acoustical
COM

WALL COVERING



Acoustical
COM

CARVART®