



TRANSPORTATION & PUBLIC SPACES

## ABOUT US



### HERITAGE AND TRADITION BLENDED WITH CREATIVITY AND INNOVATION.

#### This is CARVART.

Under the strategic leadership of our visionary CEO, Edward Geyman, CARVART has evolved from a modest family-owned business, established over two decades ago in a quaint Brooklyn factory, to a prominent leader in the architectural product and engineering sector. Today, we serve a distinguished clientele not only in New York City but across the United States and globally.

Despite our growth, one element remains constant — the Geyman touch — a steadfast dedication to merging artisanal skill with innovative solutions, ensuring each project resonates with personal creativity and expert execution.

#### CREATE WITH CARVART

##### US + GLOBAL

Our Industry Outreach is not just about expanding our geographical footprint; it's about fostering relationships, driving innovation, and delivering exceptional value to our clients, wherever they may be.

##### NEW YORK

Headquarters at Times Square





## TRANSPORTATION & PUBLIC SPACES CASE STUDIES INDEX



### AIRPORTS

**Newark International**

Terminal A/Terminal B

**LaGuardia International**

Terminal B/Terminal C

**Philadelphia International**

glassRAILING

**Baltimore Washington**

glassBOX

**George Bush Intercontinental**

glassBOX

### RAIL TRANSPORT

**Oculus (World Trade Center)**

glassRAILING

**Amtrak (New York Penn Station)**

Glass



### PUBLIC SPACES

**Chase Sapphire Lounge**

Multi-location

**United Lounge**

Newark International

**DC Convention Center**

glassBOX



**NEWARK AIRPORT**





## NEWARK AIRPORT: Identifying Challenges

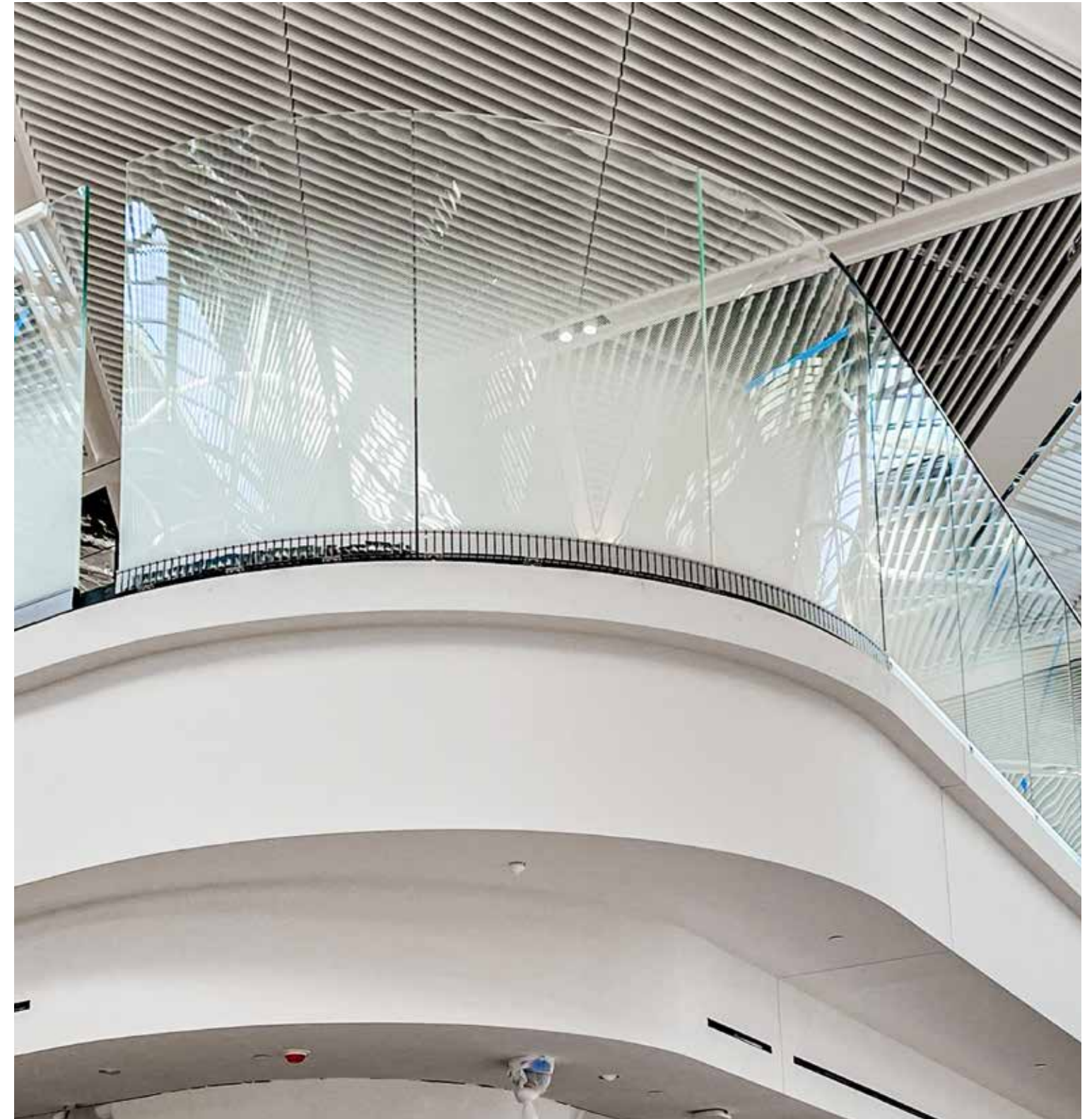


**Asymmetrical Panels:** Tackled the complexities of asymmetrical panel compositions.

**Freestanding Structures:** Engineered solutions for stable freestanding installations.

**Graphics Integration:** Successfully incorporated high-resolution graphics on both interior and exterior surfaces.

**Durability Focus:** Ensured the durability and ease of maintenance of large glass wall panels in high-traffic areas.





## NEWARK AIRPORT: Strategic Solution Development



**Engineered Railings:** Created 8-foot-tall freestanding railings with curved gradient glass.

**Veneer Prints:** Applied high-resolution veneer prints on asymmetrical panels for bathroom installations.

**Material Specifications:** Lorem ipsum dolor sit amet, consectetur adipiscing elit.

**Structural Supports:** Designed complex structural steel plates and supports for frameless systems.



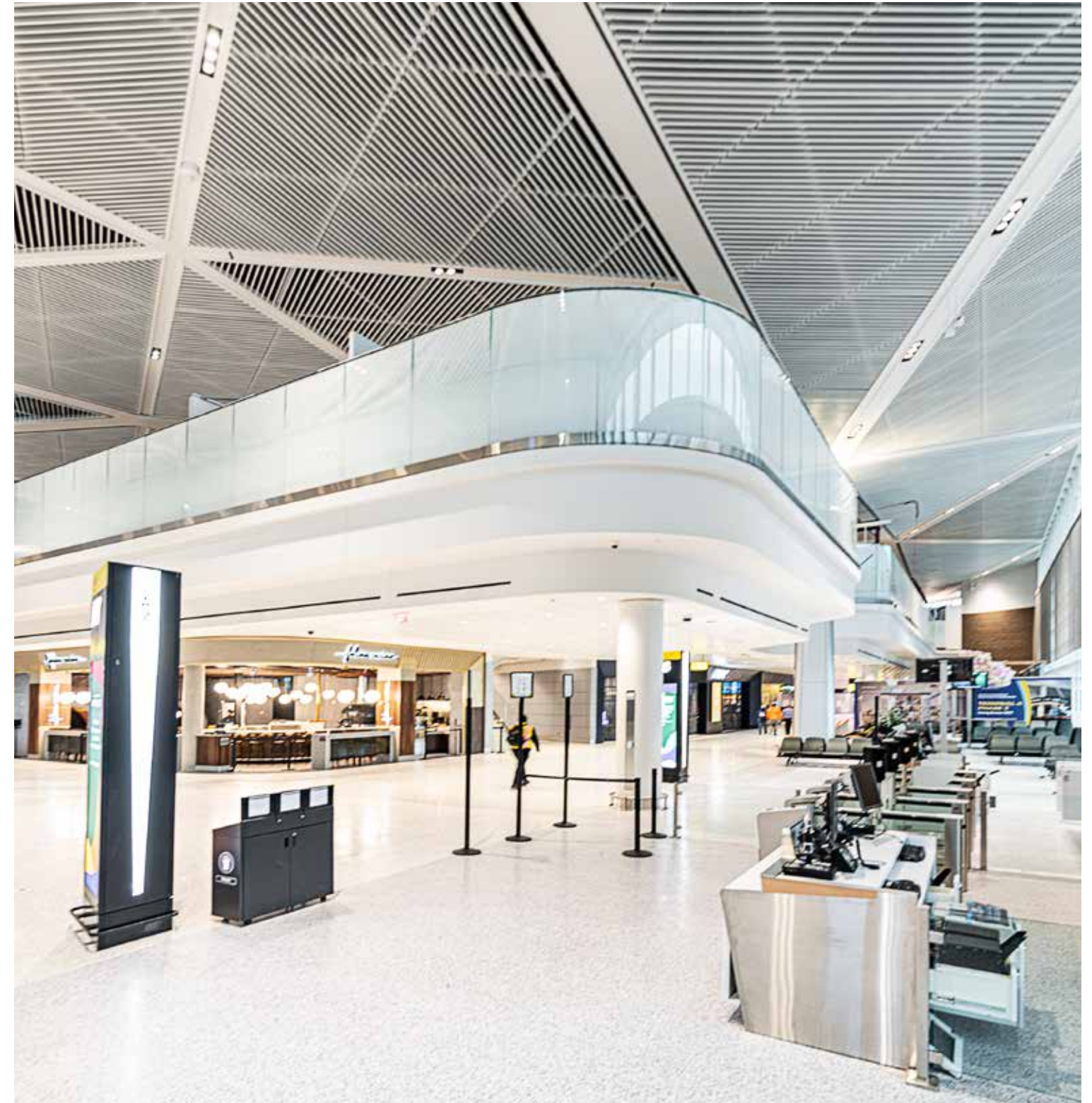
## NEWARK AIRPORT: Implementation and Deployment

**Gradient Railings:** Added movement and flow with gradient railings.

**Easy Installation:** Designed pre-glazed railings for straightforward installation.

**Durable Panels:** Installed large glass wall panels ensuring durability and ease of cleaning.

**Themed Installations:** Created themed bathroom installations with wood grain exteriors and high-resolution graphic interiors.





**NEWARK AIRPORT**





## NEWARK AIRPORT: NOTABLE ACHIEVEMENTS AND INNOVATIONS - TERMINAL A



**Freestanding Railings:** Created 8-foot-tall freestanding railings with curved gradient glass, providing privacy while maintaining an open aesthetic.

**Custom Bathroom Installations:** Developed high-resolution veneer prints for asymmetrical panels in themed bathrooms, enhancing the visual appeal.

**Premier Check-In Lounges:** Designed and installed 18-foot-tall freestanding walls, creating a sense of grandeur and maintaining architectural views.

**Security Kiosks and Walls:** Engineered prefabricated modules for security kiosks and 14-foot-tall freestanding security walls, ensuring safety and efficiency.

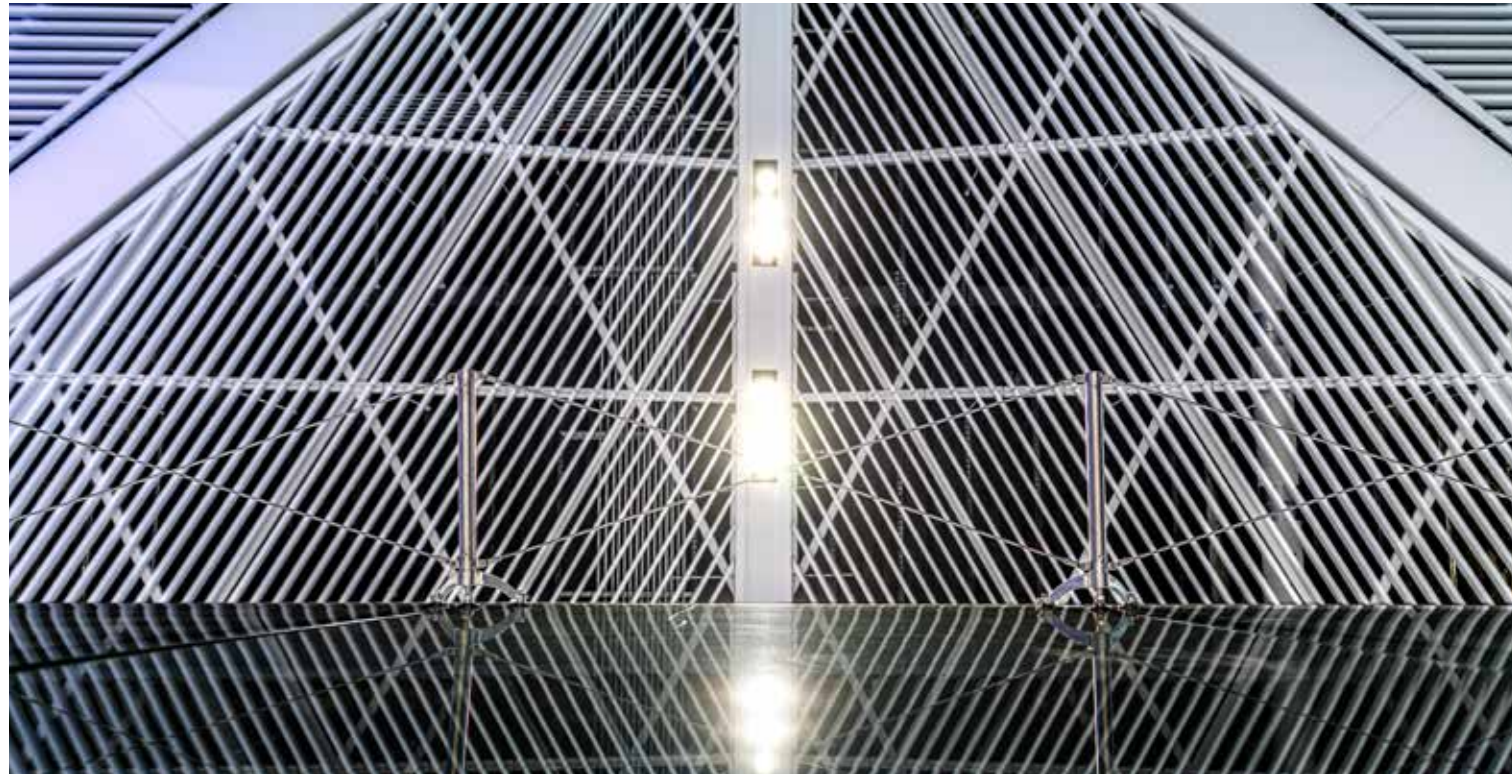


**NEWARK AIRPORT: GALLERY - TERMINAL A**





**NEWARK AIRPORT: GALLERY - TERMINAL A**





## NEWARK AIRPORT: NOTABLE ACHIEVEMENTS AND INNOVATIONS - TERMINAL B



**Custom Toilet Cubicles:** Designed cubicles with security features, such as through-bolt connections and privacy indicators, ensuring durability and user safety.

**Transom Glass Panels:** Created custom transom glass to ensure visibility of strobe lights for emergency alerts while maintaining privacy.

**Durable Cladding:** Developed stainless steel cladding at the base of cubicles to protect against mops and cleaning chemicals.

**Anti-Vandalism Hardware:** Implemented security screws and hardware to prevent tampering and enhance the robustness of the installations.

**Coved Base Extrusions:** Used coved extrusions to prevent dirt and bacteria accumulation, enhancing hygiene in high-traffic areas.



**NEWARK AIRPORT: TERMINAL B - GALLERY**





## NEWARK AIRPORT: SOLUTIONS

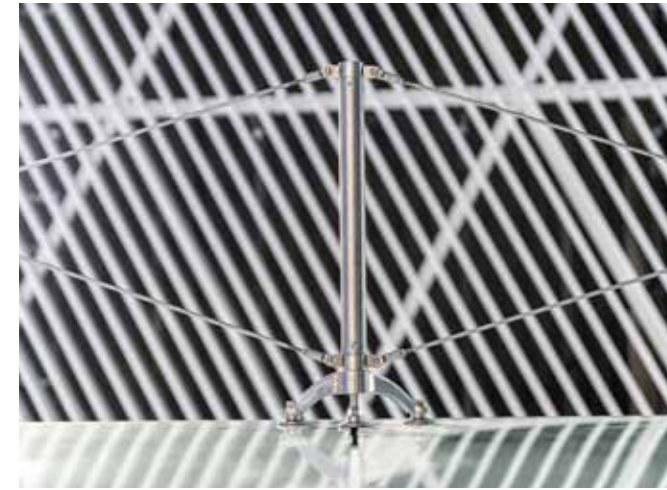
### ARCHITECTURAL SYSTEMS & MATERIALS



**Freestanding Railings:** Used curved gradient glass and structural steel supports.



**Bathroom Veneer:** Employed high-resolution printed veneer and graphics for bathroom cubicles.



**Glass Panels:** Installed large glass wall panels with detailed corners and seams.



**Check-In Walls:** Designed 18-foot-tall freestanding walls with 1-inch thick glass.



**Security Modules:** Utilized prefabricated stainless steel and glass modules for security kiosks and custom structural steel plates for security walls.



## LAGUARDIA AIRPORT





## LAGUARDIA AIRPORT: Identifying Challenges



**Curved Glass Panels:** Navigating the complexities of fabricating and installing curved laminated glass panels.

**Stringent Safety Standards:** Meeting rigorous safety standards required for high-traffic public spaces.

**Privacy vs. Transparency:** Balancing privacy for TSA operations with the need for transparency and aesthetic appeal.

**Precise Graphic Alignment:** Ensuring the dot pattern on glass panels remains accurate and visually appealing despite curvature.





## LAGUARDIA AIRPORT: Strategic Solution Development



**Advanced Fabrication Techniques:** Employed advanced techniques to produce curved laminated glass.

**Detailed Engineering Plans:** Developed comprehensive engineering plans to ensure each piece of glass fits perfectly within the structure.

**Custom Graphics Solutions:** Created methods for precise alignment of custom dot patterns on curved glass panels.

**Material Selection:** Utilized high-quality materials, including heat-soaked, tempered, and laminated glass for durability and safety.



## LAGUARDIA AIRPORT: Implementation and Deployment

**Precise Glass Installation:** Successfully installed curved laminated glass panels with meticulous attention to alignment and pattern consistency.

**Structural Cladding Integration:** Used non-directional stainless steel for headers and folding walls, ensuring a seamless and durable integration with the glass panels.

**Enhanced Durability:** Ensured the installation's durability and safety by using heat-soaked, tempered, and laminated glass panels.

**Modular Prefabrication:** Employed modular prefabrication techniques to streamline the installation process and maintain high quality.

**Efficient Deployment:** Completed the project under tight schedules, minimizing disruptions and ensuring timely completion.



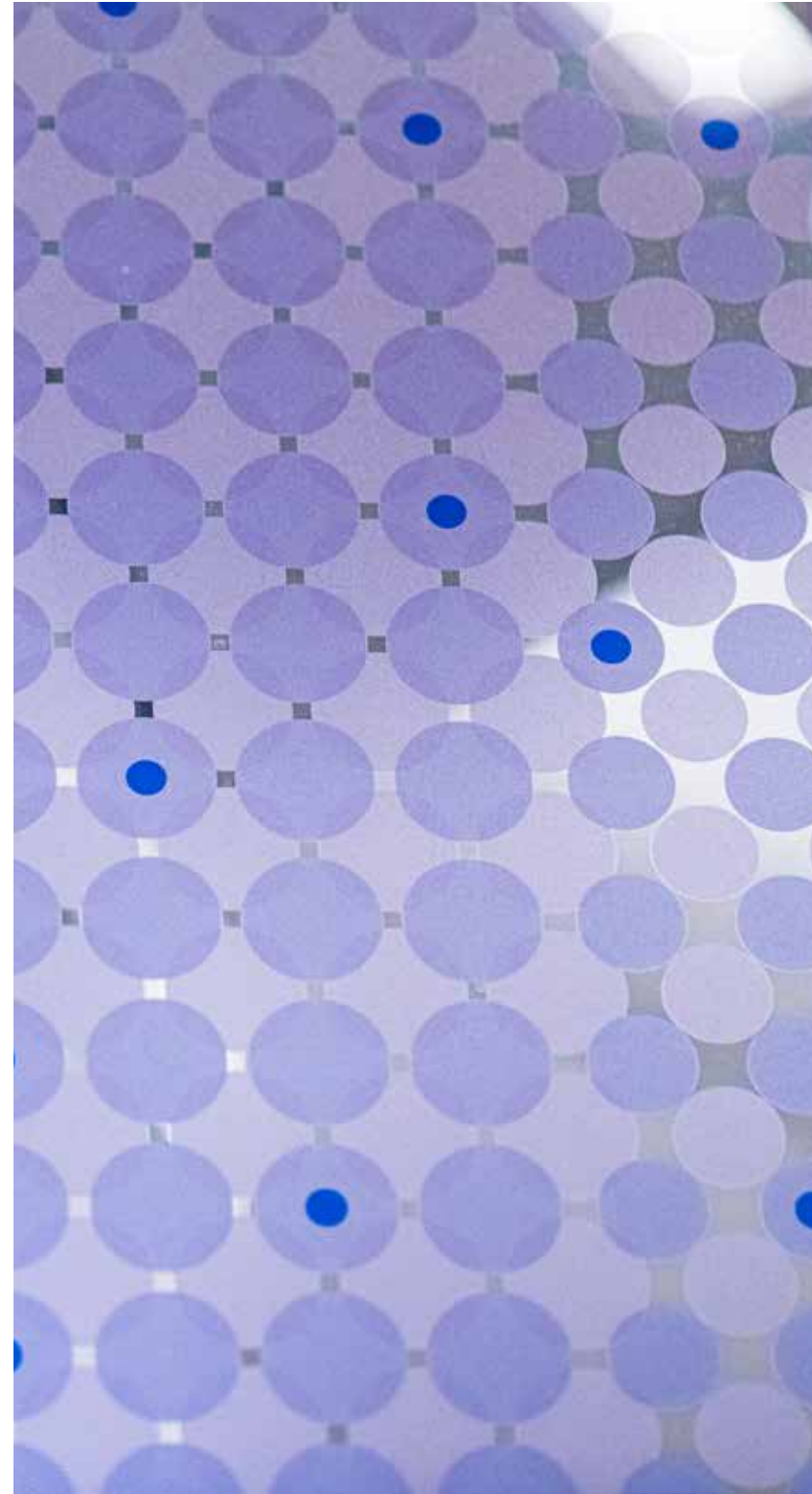


## LAGUARDIA AIRPORT





## LAGUARDIA AIRPORT: NOTABLE ACHIEVEMENTS AND INNOVATIONS - TERMINAL B



**Curved Glass Panels:** Successfully fabricated and installed curved laminated glass panels with complex dot patterns, ensuring visual continuity and aesthetic appeal.

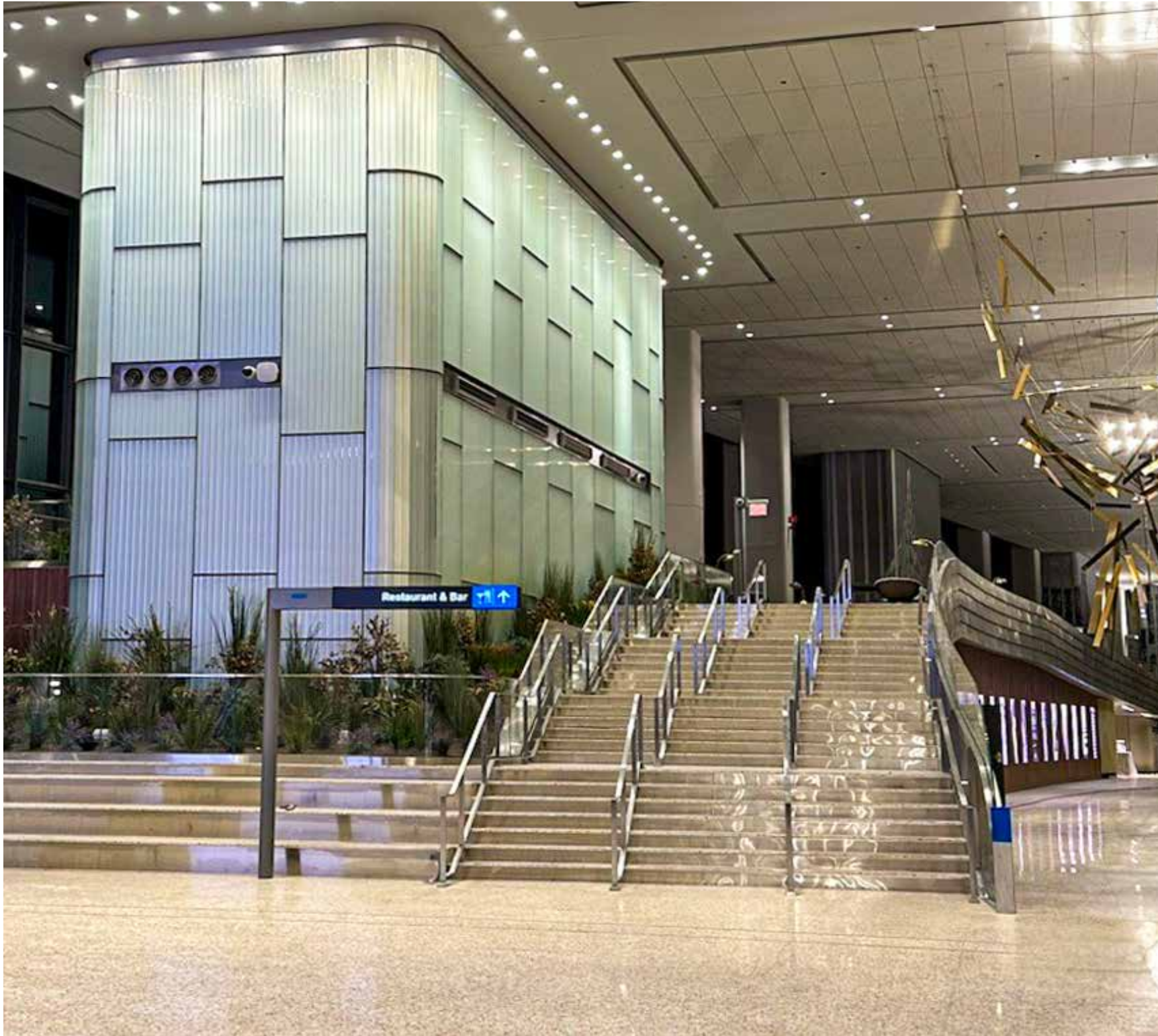
**City-Themed Graphics:** Integrated New York State colors into the glass graphics, creating a city-themed design that enhances the terminal's visual identity.

**Privacy and Transparency Balance:** Engineered glass with the right opacity to provide privacy for TSA operations while maintaining an open and transparent ambiance.

**High-Resolution Graphics:** Utilized advanced printing techniques to achieve high-resolution graphics on both the first and third surfaces of the glass, ensuring clarity and durability.



## LAGUARDIA AIRPORT: NOTABLE ACHIEVEMENTS AND INNOVATIONS - TERMINAL C



**Central Hall Feature Wall:** Engineered a 50-foot-tall feature wall with custom laminated glass, micro-line acid-etched surface, and modular prefabrication for efficient installation.

**Movable Walls:** Designed and installed movable glass walls for conference rooms, providing flexibility and space optimization.

**Back-Painted Glass:** Provided fluted, back-painted glass with a golden finish for aesthetic enhancement in lounges.

**Custom Structural Solutions:** Developed hooks and framing systems for safe and precise installation of large glass panels without suction cups.

**Advanced Coordination:** Ensured seamless integration of glass panels with existing architectural elements, maintaining design consistency and structural integrity.

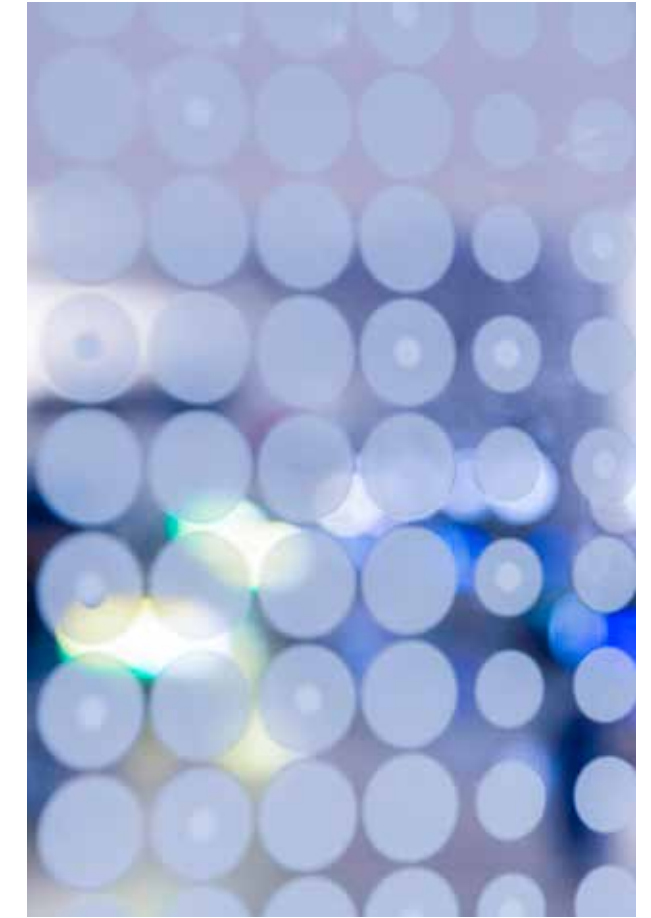
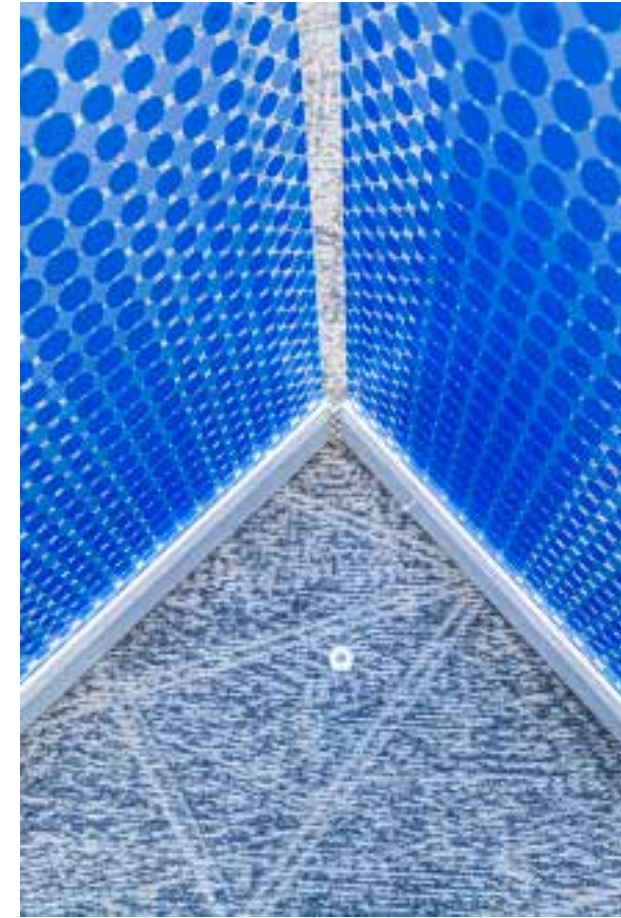


**LAGUARDIA AIRPORT: GALLERY**





## LAGUARDIA AIRPORT: GALLERY



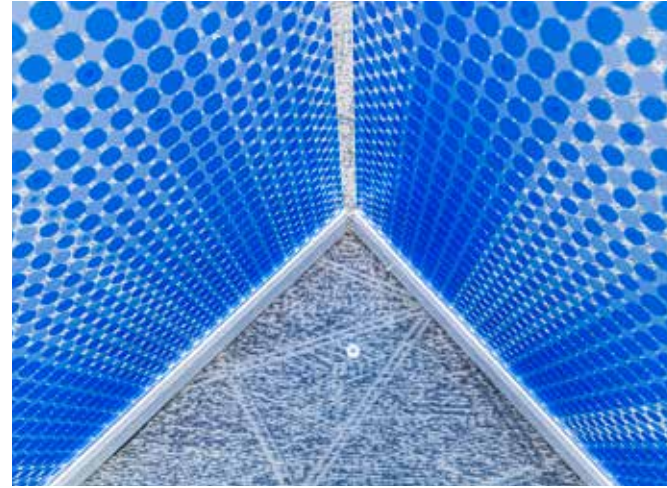


# LAGUARDIA AIRPORT: SOLUTIONS

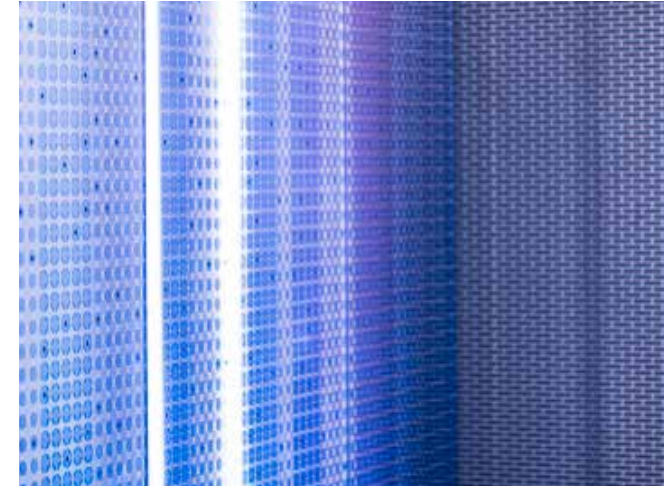
## ARCHITECTURAL SYSTEMS & MATERIALS



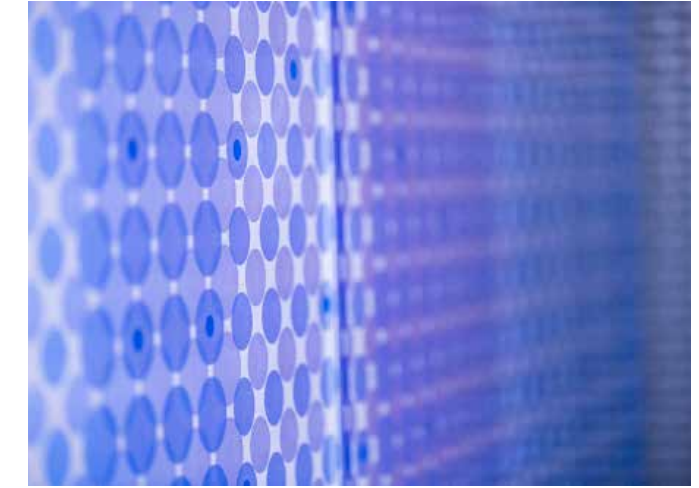
**Structural Glass System:** Utilized custom-fabricated laminated glass panels with precise curvature.



**Enhanced Safety:** Tempered and laminated glass suitable for high-traffic areas.



**Custom Graphics**



**Gradient Glass:** Used for glass walls, providing privacy and dynamic visual effects.



**Custom Graphics:** Applied dot patterns in New York State colors.



**Performance Standards:** Detailed engineering plans and extensive testing.



## PHILADELPHIA AIRPORT





## PHILADELPHIA AIRPORT: Identifying Challenges

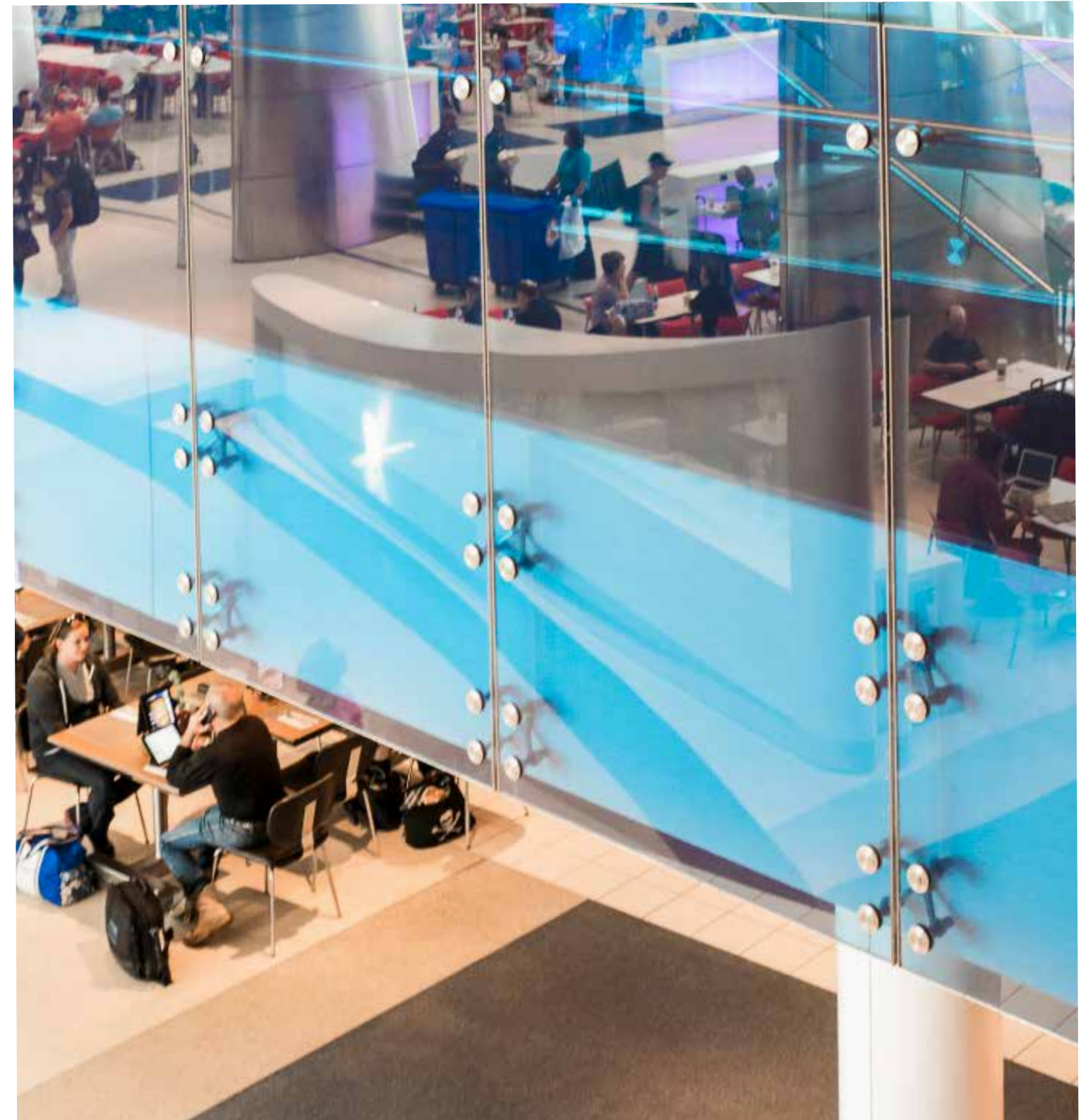


**Color Consistency and Transparency:** Achieving a specific shade of blue while maintaining transparency and structural integrity.

**Stainless Steel Wrapping:** Ensuring stainless steel wraps did not affect the glass lamination.

**High-Traffic Durability:** Guaranteeing the durability of laminated glass panels in a high-traffic environment.

**Precise Alignment:** Managing precise alignment and attachment of segmented glass pieces.





## PHILADELPHIA AIRPORT: Strategic Solution Development



**Custom Fabrication Techniques:** Developed unique methods for producing blue laminated glass.

**Innovative Wrapping Solutions:** Used double-faced tape for durable and clean stainless steel wrapping.

**Detailed Engineering Plans:** Created comprehensive plans and conducted extensive testing.

**Seamless Design Implementation:** Ensured precise alignment of glass segments and stainless steel wraps.



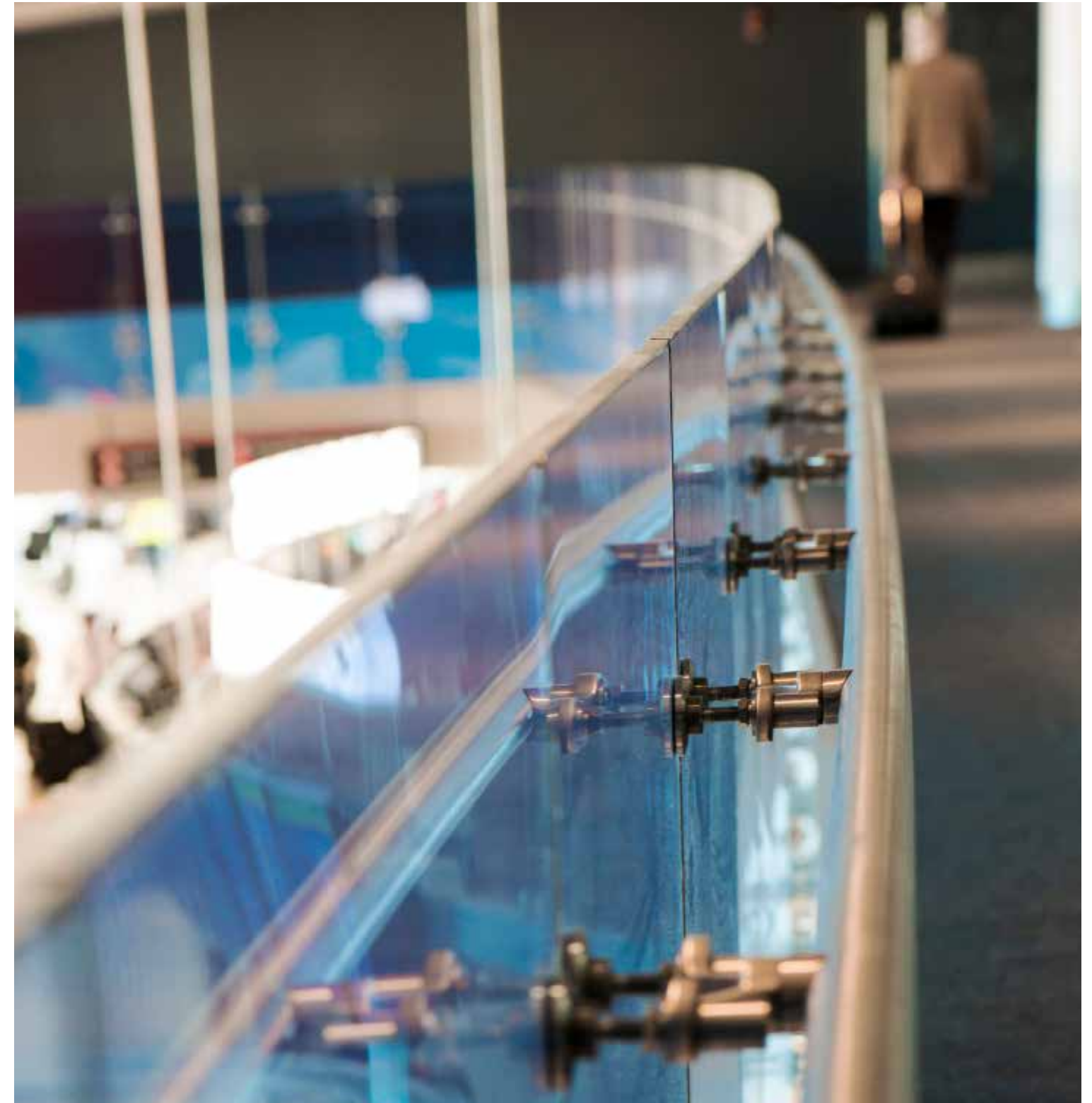
## PHILADELPHIA AIRPORT: Implementation and Deployment

**Glass Panel Installation:** Installed blue laminated glass panels wrapped in stainless steel bars.

**Double-Faced Tape Application:** Utilized double-faced tape for clean and durable attachment.

**Seamless Alignment:** Ensured precise alignment for a flawless finish.

**High-Quality Execution:** Demonstrated the ability to deliver high-quality solutions in a high-traffic environment.



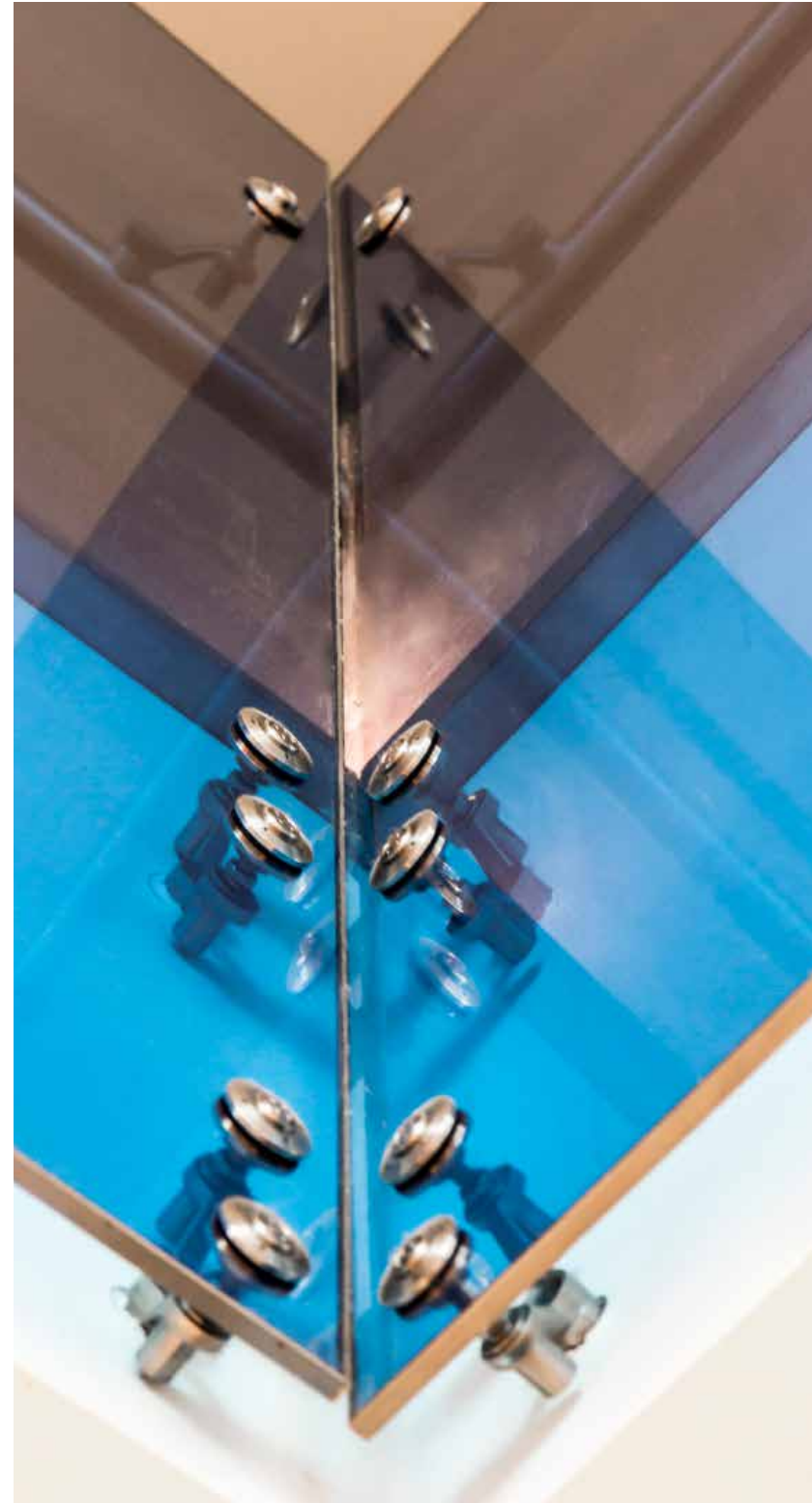
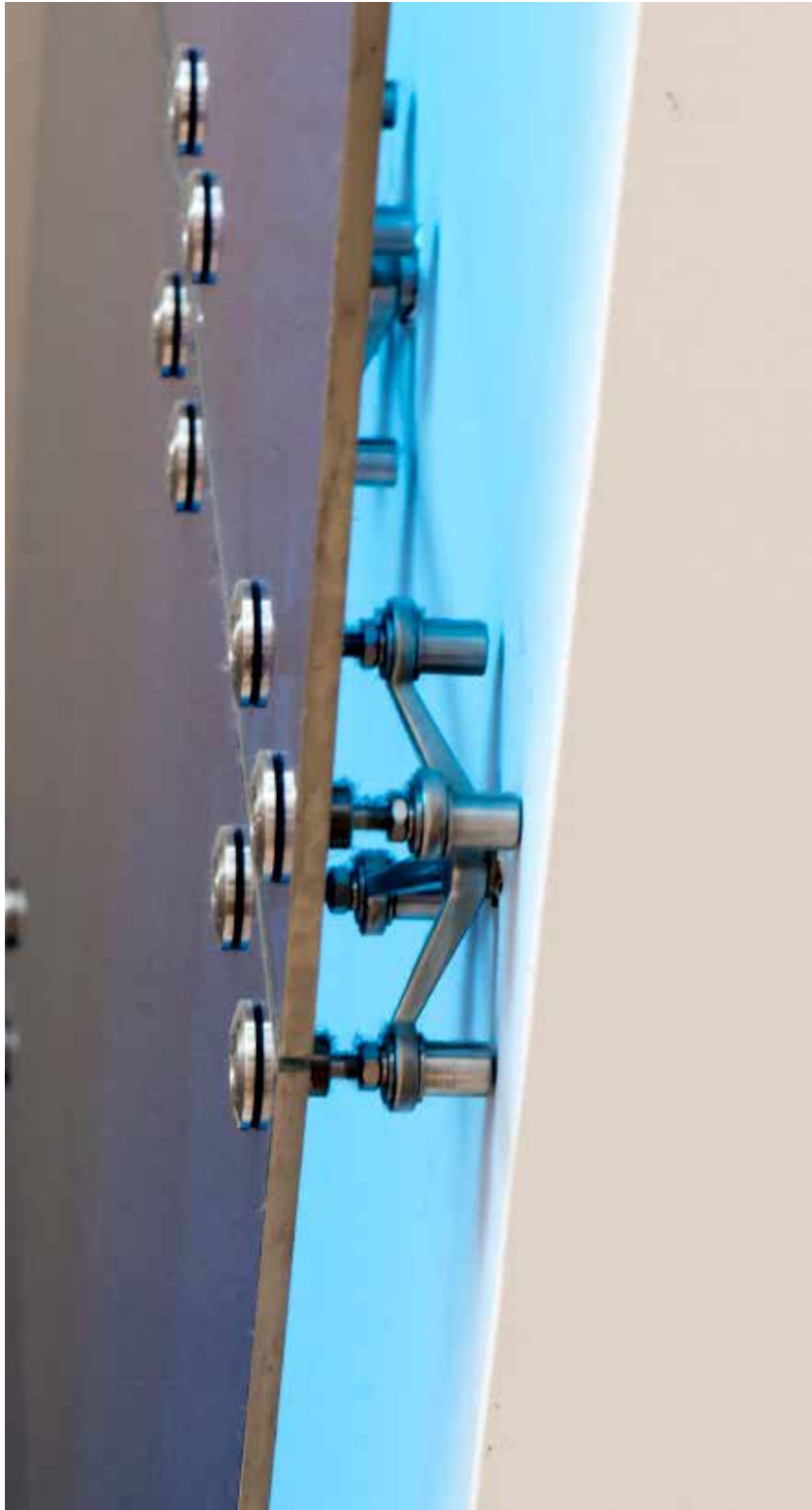


## PHILADELPHIA AIRPORT





## PHILADELPHIA AIRPORT: NOTABLE ACHIEVEMENTS AND INNOVATIONS



**Color and Transparency:** Developed blue laminated glass with precise color and structural integrity.

**Innovative Wrapping Technique:** Utilized double-faced tape for seamless attachment.

**Precision Engineering:** Ensured high safety and performance standards.

**High-Traffic Durability:** Designed solutions to withstand busy airport demands.

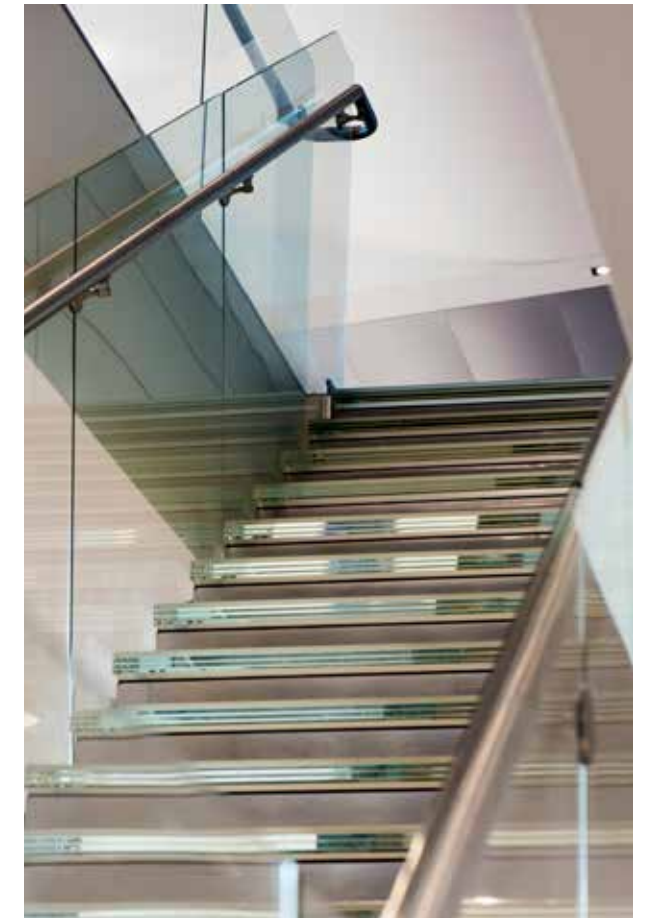


## PHILADELPHIA AIRPORT: GALLERY





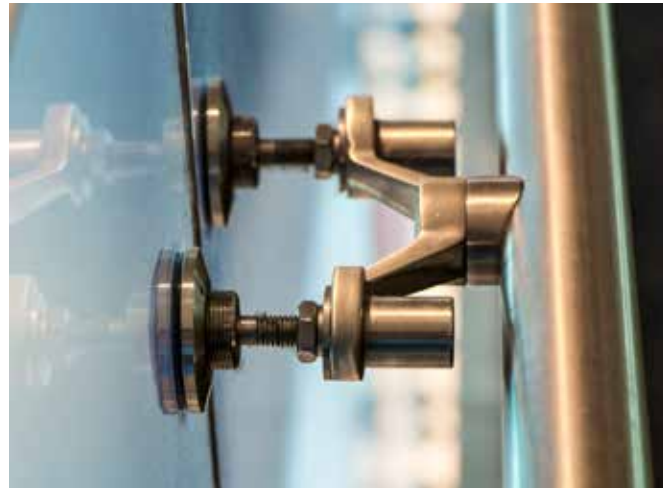
# PHILADELPHIA AIRPORT: GALLERY



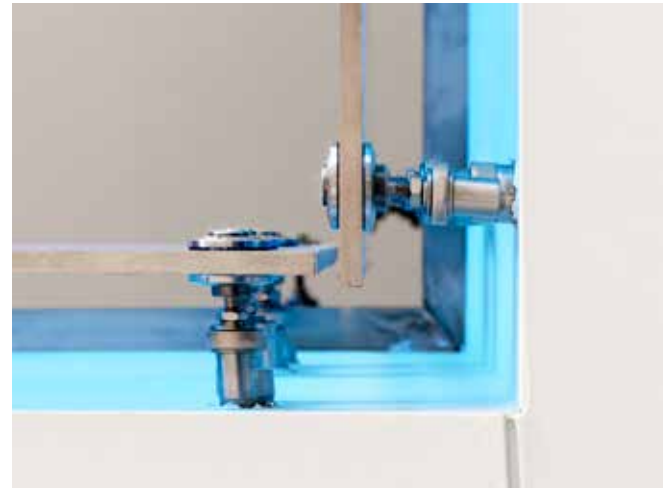


## PHILADELPHIA AIRPORT: SOLUTIONS

### ARCHITECTURAL SYSTEMS & MATERIALS



**Stainless Steel Framework:** Custom stainless steel wraps for structural and aesthetic integration.



**Attachment System:** Double-faced tape technology for secure attachment.



**Blue Laminated Glass:** Custom-fabricated, tempered, and laminated for safety.



**Stainless Steel Wraps:** Mitered bars attached with double-faced tape.



**Structural Glass System:** Tempered and laminated glass for enhanced safety and durability.



**Engineering Precision:** Detailed plans and extensive testing for performance standards.

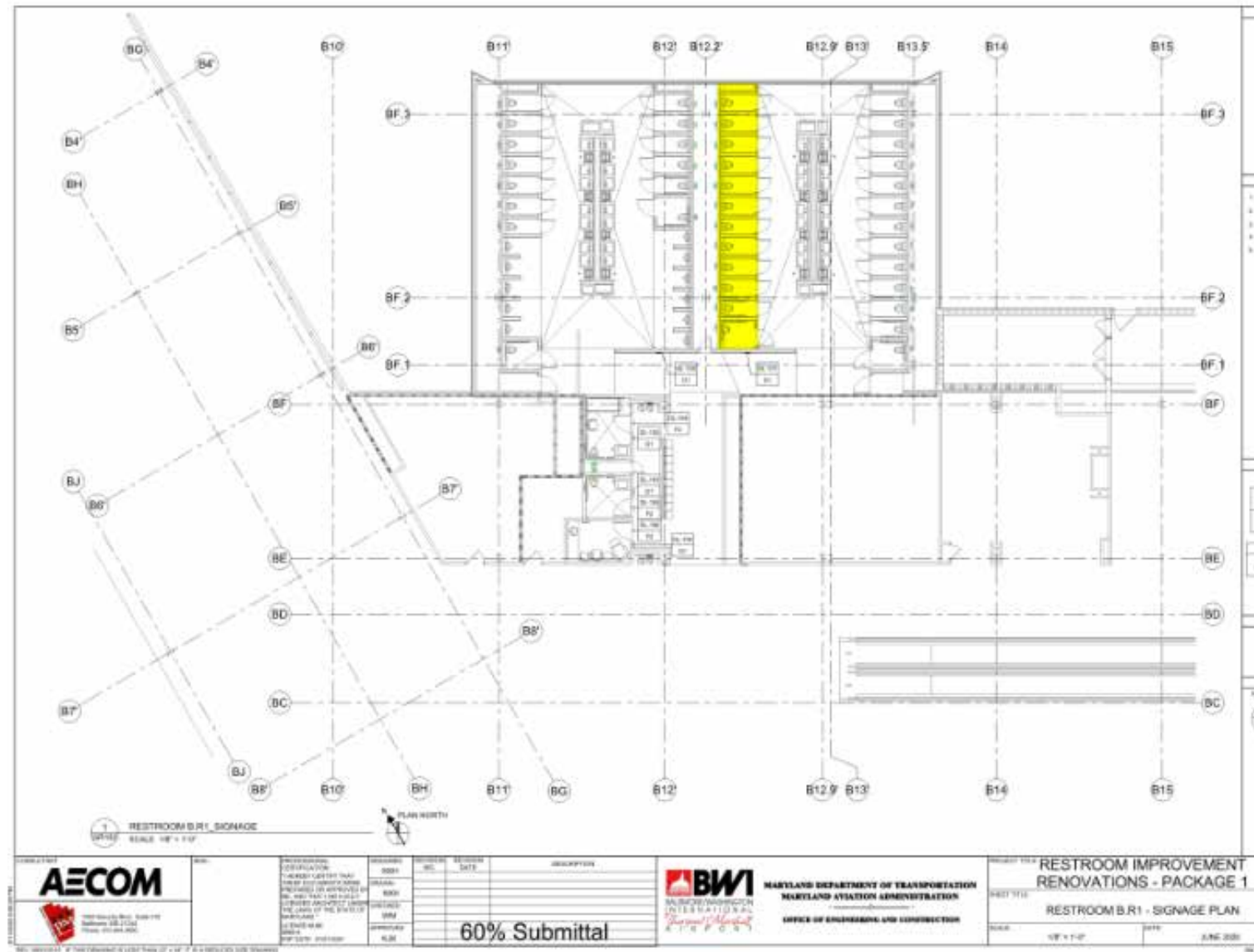


## BWI THURGOOD MARSHALL AIRPORT





## BWI: Identifying Challenges



**Precise Fit and Finish:** Ensuring the precise fit of laminated opaque glass with frosted tops.

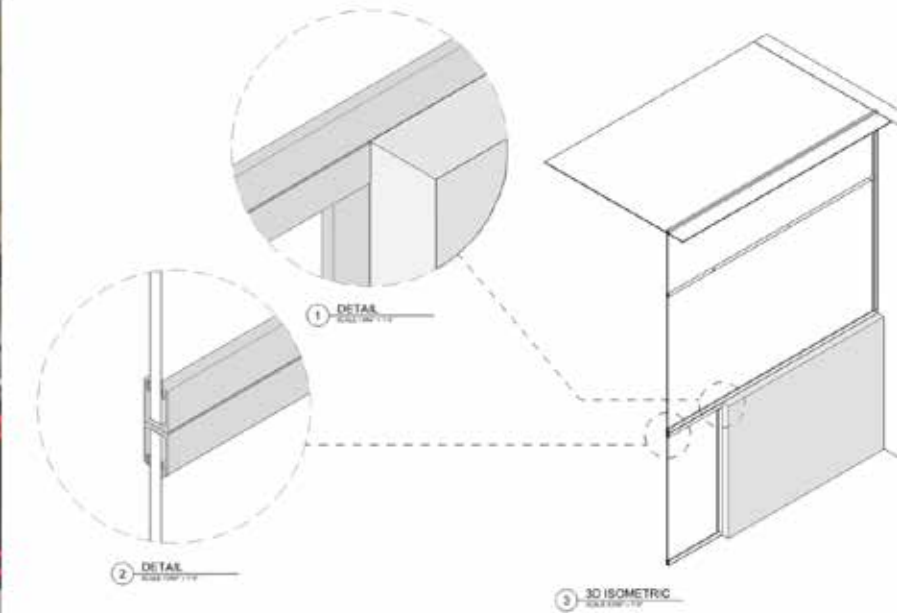
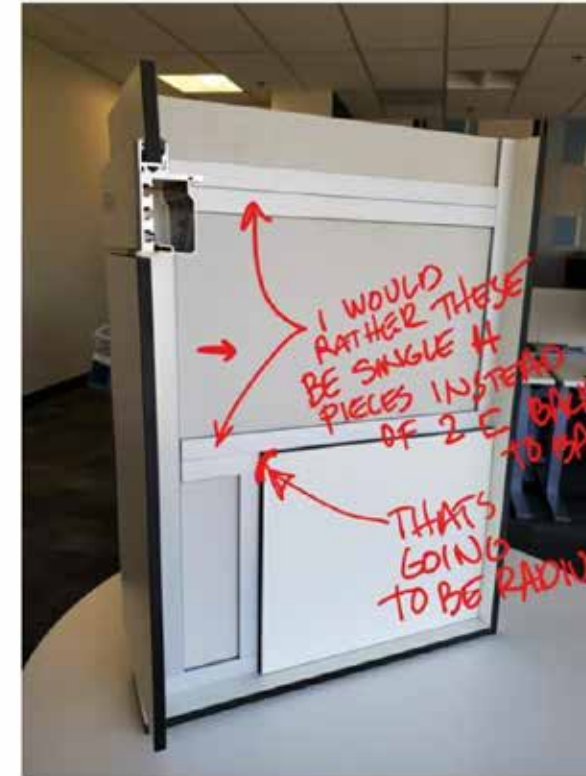
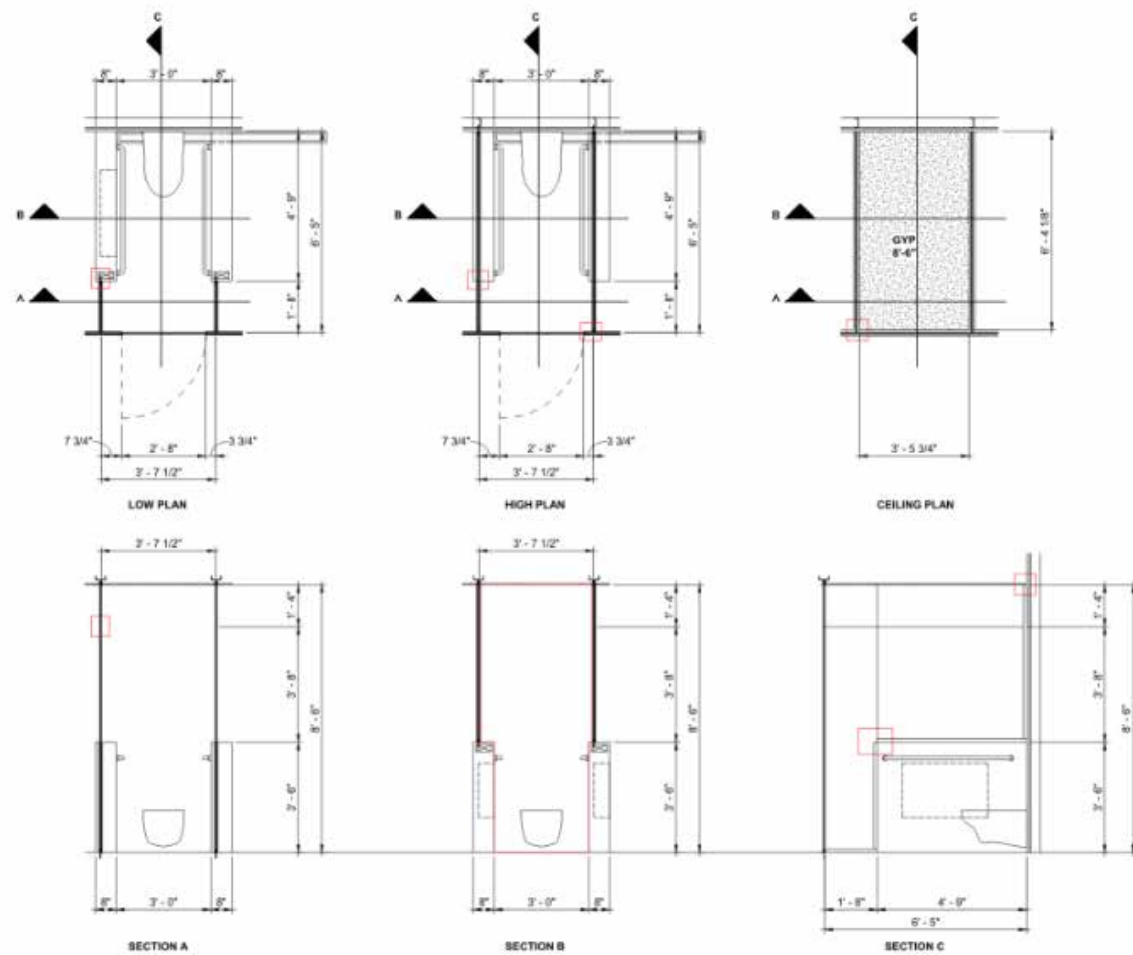
**Advance Material Ordering:** Ordering materials a year in advance based on detailed shop drawings.

**Coordination with Trades:** Close coordination with drywall and solid surface contractors.

**Custom Fabrication:** Fabricating around half-walls to integrate with the glass-ENCLOSE system.



## BWI: Strategic Solution Development



**Laminated Opaque Glass:** Used to provide natural light and maintain privacy.

**Advanced Planning:** Detailed coordination to ensure perfect fit and timely installation.

**GlassENCLOSE System:** Full-height design with concealed hardware and continuous sightline dividers.

**LED Occupancy Indicators:** Enhanced functionality within the glassENCLOSE system.

**Innovative Translucent Transom:** Balancing visibility and privacy.



## BWI: Implementation and Deployment

**Full-Height GlassENCLOSE Systems:** Installed with custom laminated opaque glass and frosted tops.

**Back-Painted Glass at Sinks:** Added color and vibrancy behind back-lit mirrors.

**Seamless Integration:** Achieved through strategic collaboration with drywall and solid surface contractors.

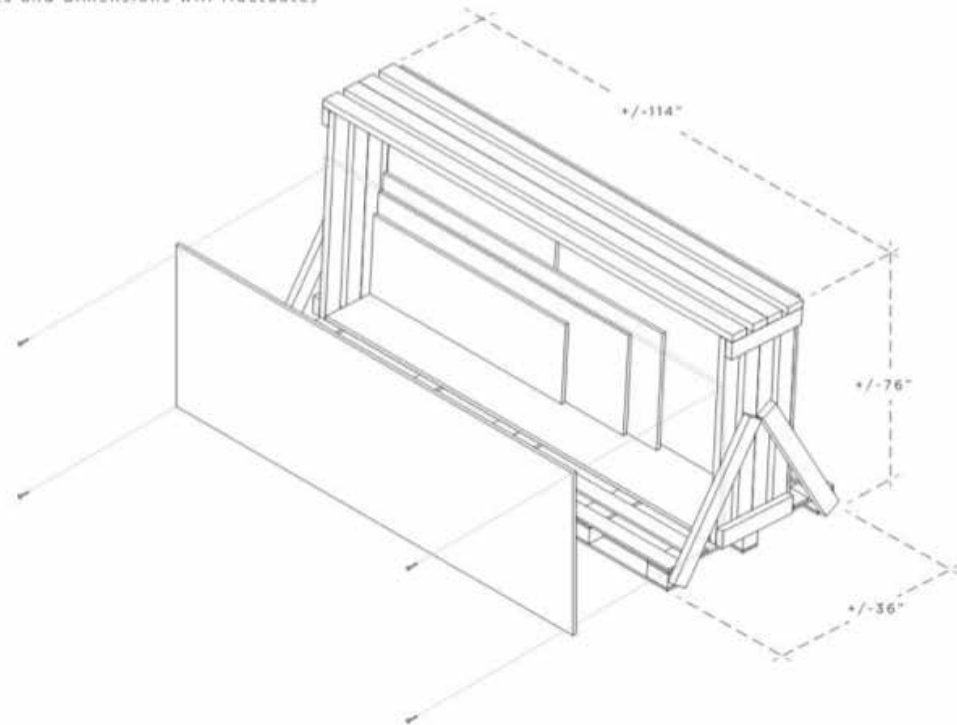
**Translucent Transom:** Provided visibility for emergency beacons while maintaining privacy.

CARVART

800-438-2222 - 3D/2D/VR/AR

CARVART.COM

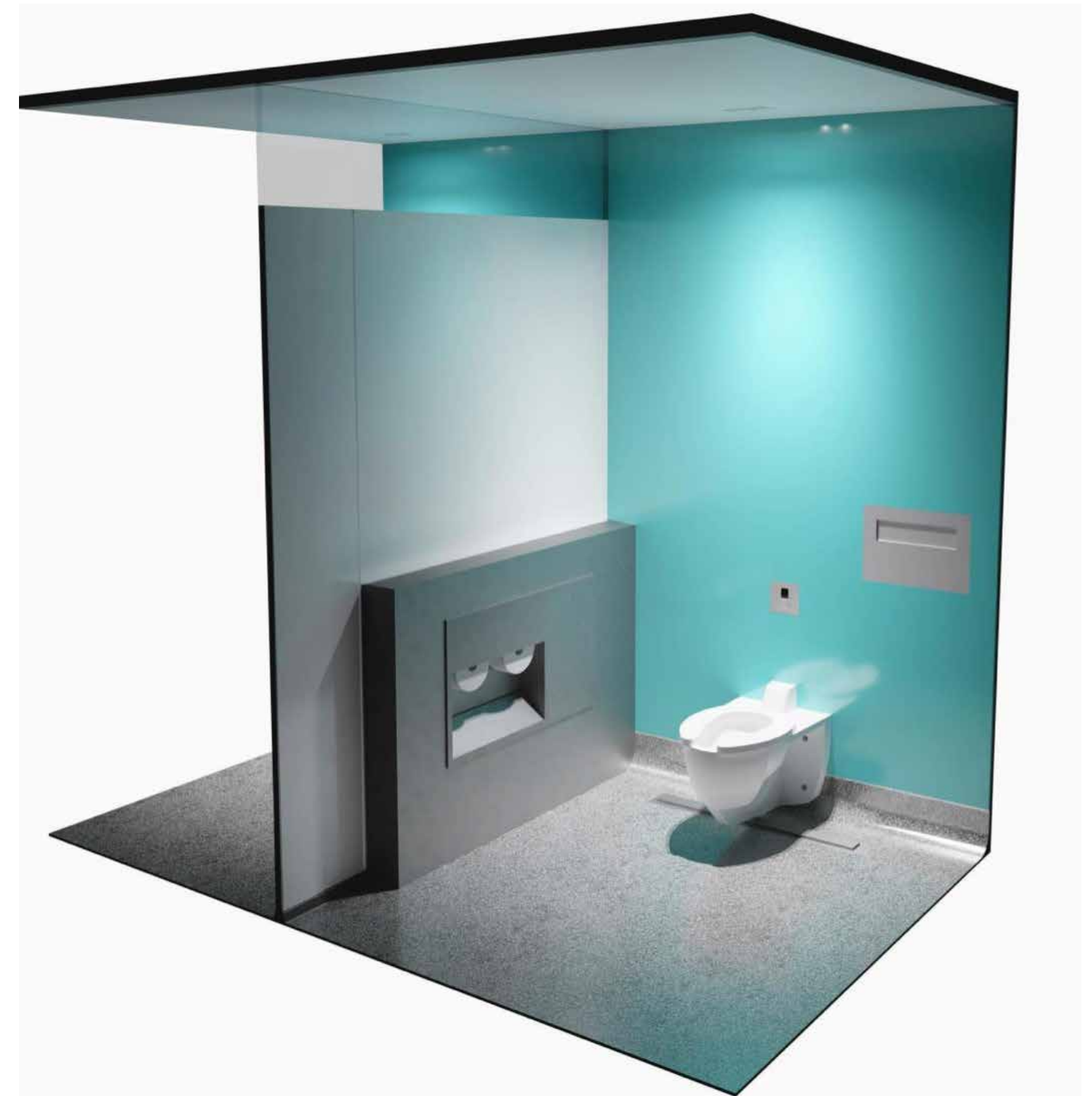
Typical crate construction and approximate dimensions.  
(Crate contents and dimensions will fluctuate)



800-438-2222

INFO@CARVART.COM

3D/2D/VR/AR





**BWI THURGOOD MARSHALL AIRPORT**





## BWI: NOTABLE ACHIEVEMENTS AND INNOVATIONS

# Now Boarding: Winner Of Cintas 2023 America's Best Restroom® Contest – BWI Thurgood Marshall Airport

"We're honored to be recognized by Cintas and contest voters for our commitment to providing a **positive passenger experience and outstanding facilities**," said Ricky Smith, Executive Director/CEO of BWI Thurgood Marshall Airport.



**The project achieved notable success in several areas.** CARVART's glassENCLOSE system was central to this achievement, offering a sleek design with full-height panels, concealed hardware, and continuous sightline dividers. The innovative use of custom laminated opaque glass with frosted tops allowed natural light into the stalls while maintaining privacy. The strategic placement of back-painted glass behind back-lit mirrors added vibrancy to the restroom areas. The translucent transom ensured visibility for emergency beacons, enhancing safety for the hearing impaired. This project was recognized by the CINTAS 2023 America's Best Restroom Contest, highlighting CARVART's commitment to cutting-edge designs and client satisfaction.



**BWI: GALLERY**





**BWI : GALLERY**





## BWI: SOLUTIONS

### ARCHITECTURAL SYSTEMS & MATERIALS



**GlassENCLOSE System:** Sleek, full-height design with concealed hardware and continuous sightline dividers.



**Custom Laminated Opaque Glass:** Used for divider walls, featuring frosted tops.



**Back-Painted Glass:** Installed at sinks behind back-lit mirrors.



**LED Occupancy Indicators:** Integrated into the glassENCLOSE system.



**Translucent Transom:** Ensured visibility for emergency beacons and maintained privacy.



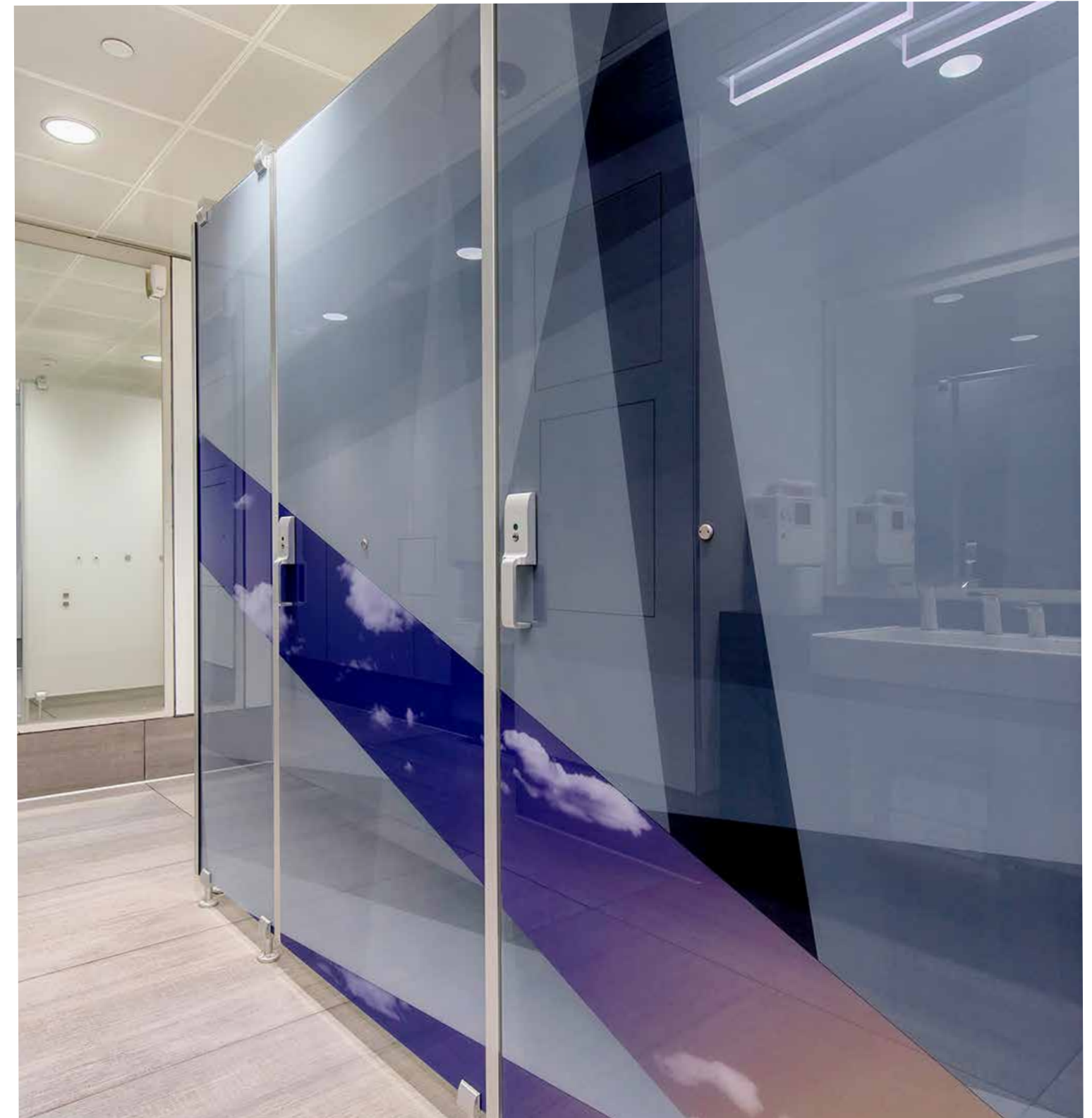
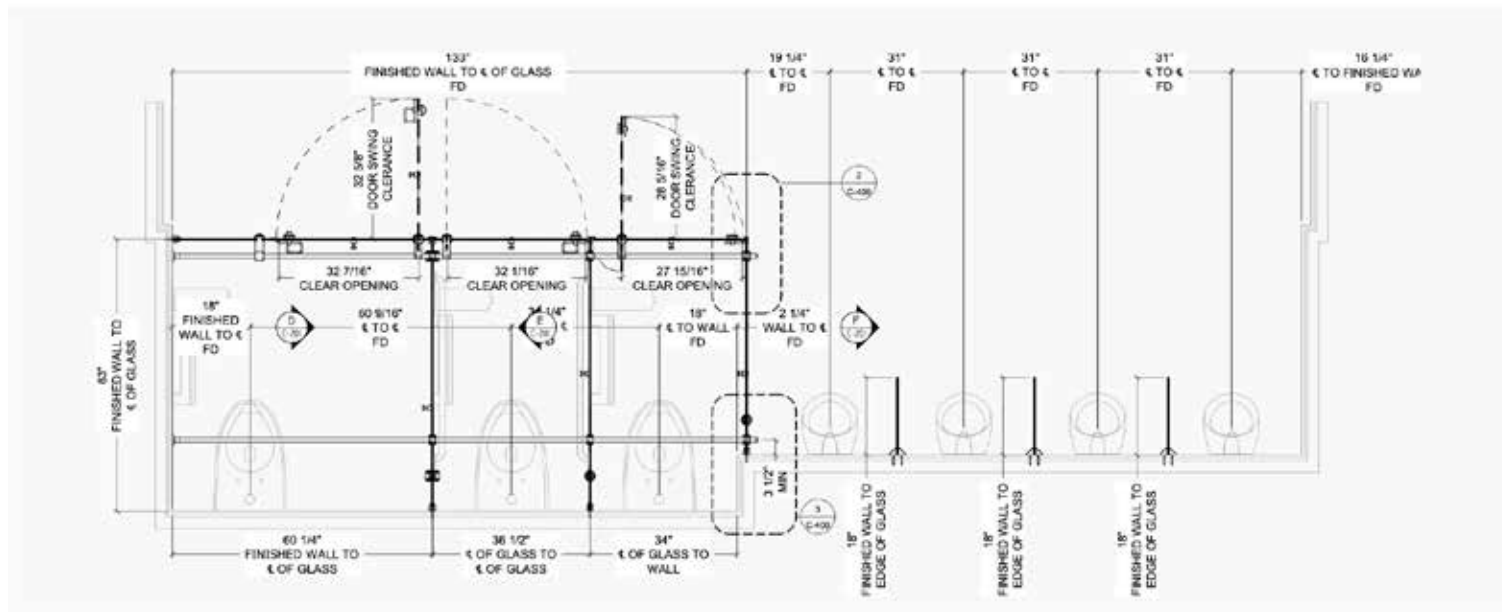


**GEORGE BUSH INTERCONTINENTAL**





## GEORGE BUSH INTERCONTINENTAL: Identifying Challenges



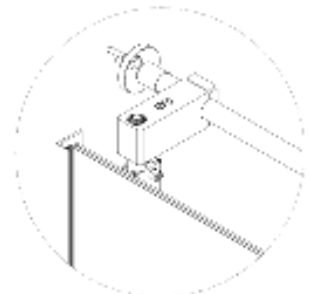
**Modular Restroom Standard:** Creating a modular restroom standard that combined flexibility, beauty, and uniqueness.

**Accessory Attachment:** Engineering a solution to securely attach accessories to glass cubicles.

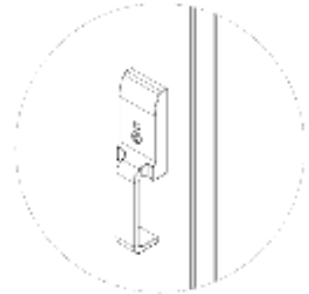
**High-Traffic Durability:** Ensuring the restroom design could withstand high-traffic conditions.



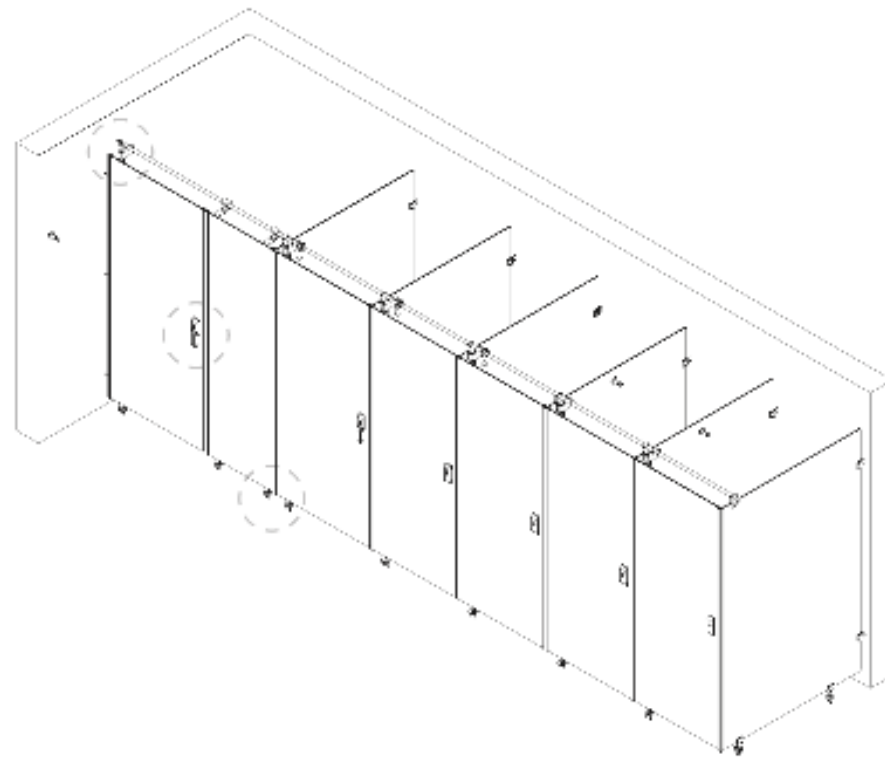
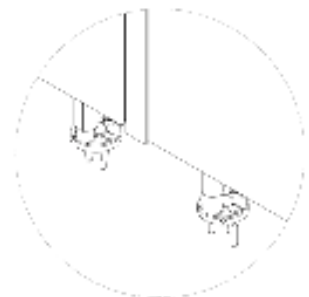
## GEORGE BUSH INTERCONTINENTAL: Strategic Solution Development



HIDDEN STABILIZING BAR



ACCESSIBLE PULL OPTIONS



**Countersunk Design:** Developed to absorb the weight of mounted accessories.

**GRAPHICglass and COLORglass:** Used to add unique visual appeal to cubicles.

**glassMIRRORS and glassPRIVACY SCREENS:** Integrated for enhanced functionality and privacy.

**Custom Engineering:** Solutions tailored to meet the unique challenges of the project.



## GEORGE BUSH INTERCONTINENTAL: Implementation and Deployment

**glassBOX Cubicles:** Installed with precision for a sleek and modern look.

**Custom Accessories:** Securely attached using the countersunk design.

**Seamless Integration:** Achieved through meticulous planning and execution.

**Modern Restroom Environment:** Created to enhance the customer experience.





**GEORGE BUSH INTERCONTINENTAL**





**GEORGE BUSH INTERCONTINENTAL: GALLERY**





**GEORGE BUSH INTERCONTINENTAL: GALLERY**





## OCULUS CENTER





## OCULUS CENTER: Identifying Challenges

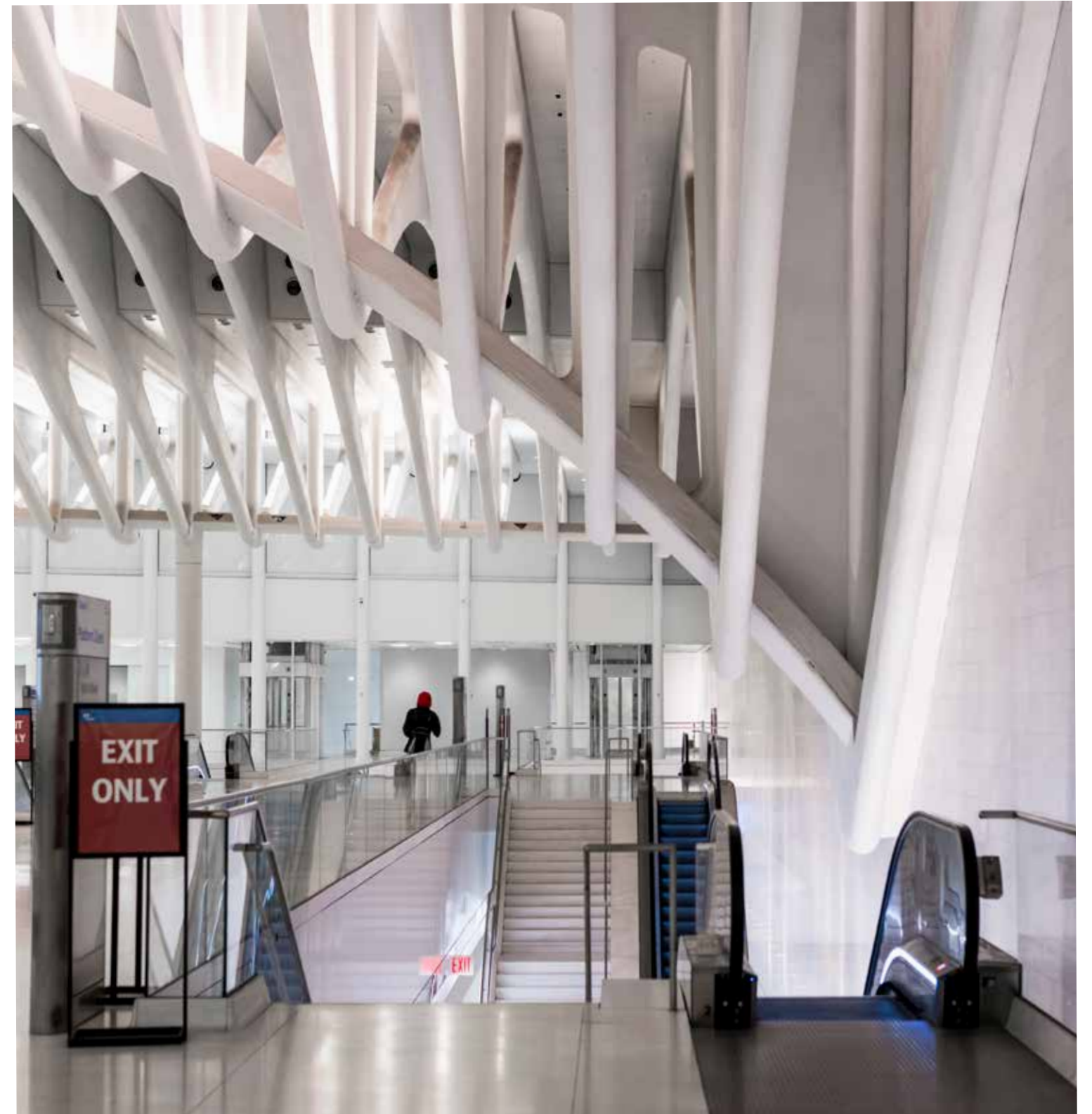


**Complex Glass Designs:** Required precise engineering for custom laminated glass with complex curved designs.

**Team Coordination:** Necessitated coordination among multiple teams to align on design and technical specifications.

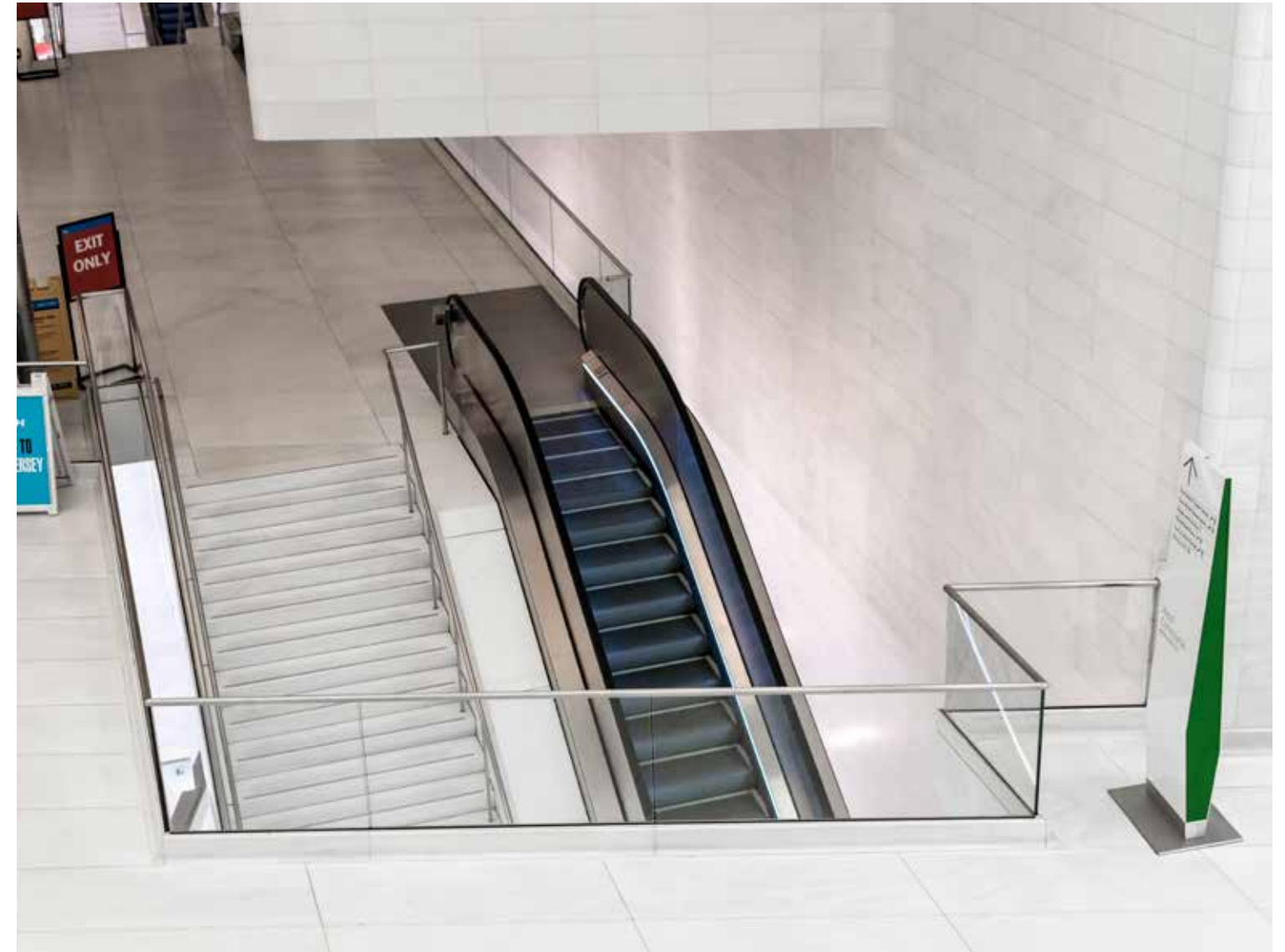
**Tight Timeline:** Involved a tight timeline, demanding efficient workflow and rapid problem-solving capabilities.

**Durability and Aesthetics:** Needed materials that were both aesthetically pleasing and durable for a high-traffic area.





## OCULUS CENTER: Strategic Solution Development



**CAD Modeling:** Employed detailed CAD modeling to ensure precise measurements for all curved glass pieces.

**Thorough Engineering:** Conducted thorough engineering to plan and execute the installation of curved glass panels.

**Collaborative Sessions:** Organized collaborative sessions to finalize design elements and ensure consistent communication.

**Enhanced Glass:** Used custom laminated glass with post-polished edges for enhanced strength and visual appeal.



## OCULUS CENTER: Implementation and Deployment

**Fabrication:** Fabricated laminated glass panels with special structural interlayers for added strength and safety.

**Post-Polishing:** Applied custom post-polishing techniques to all glass edges, ensuring a high-quality finish.

**Logo Installation:** Installed logos on multiple surfaces of the glass panels, meeting specific client requirements.

**Advanced Techniques:** Used advanced installation techniques to safely handle the curved and laminated glass panels.





## OCULUS CENTER





## OCULUS CENTER: GALLERY





**OCULUS CENTER: GALLERY**





## OCULUS CENTER: SOLUTIONS

### ARCHITECTURAL SYSTEMS & MATERIALS



**Custom Curved Glass:** The glass panels were curved to fit the unique architectural design of the Oculus.



**Logos and Branding:** Each glass panel featured logos on the outer and inner layers.



**Post-Polished Edges:** Smooth, polished edges for safety



**Post-Polished Edges:** Smooth, polished edges for safety



**Steel Supports:** Complex supports for frameless systems.



**Laminated Glass Technology:** Provided both safety and aesthetic appeal in high-traffic areas.

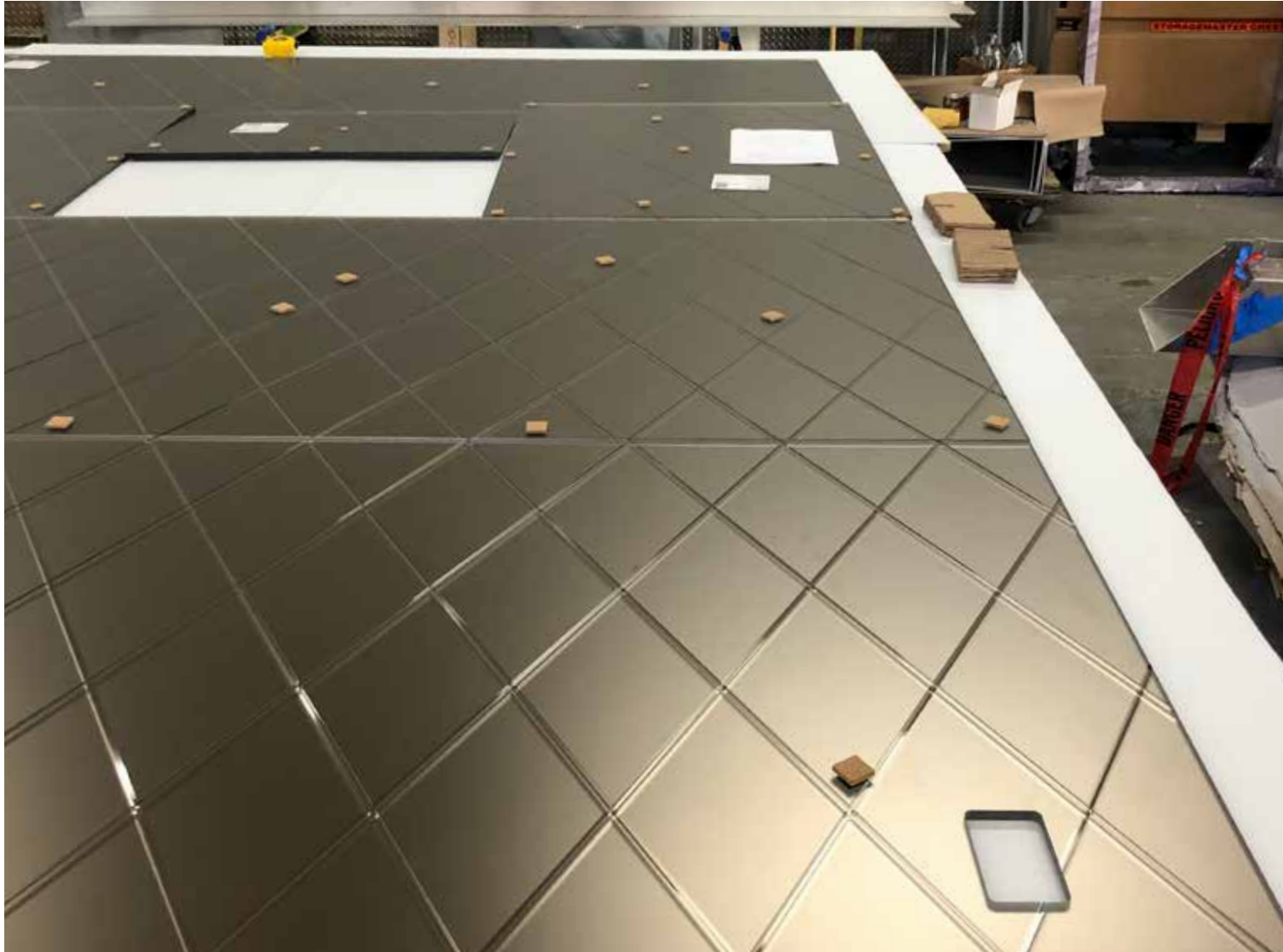


# AMTRAK





## AMTRAK: Identifying Challenges

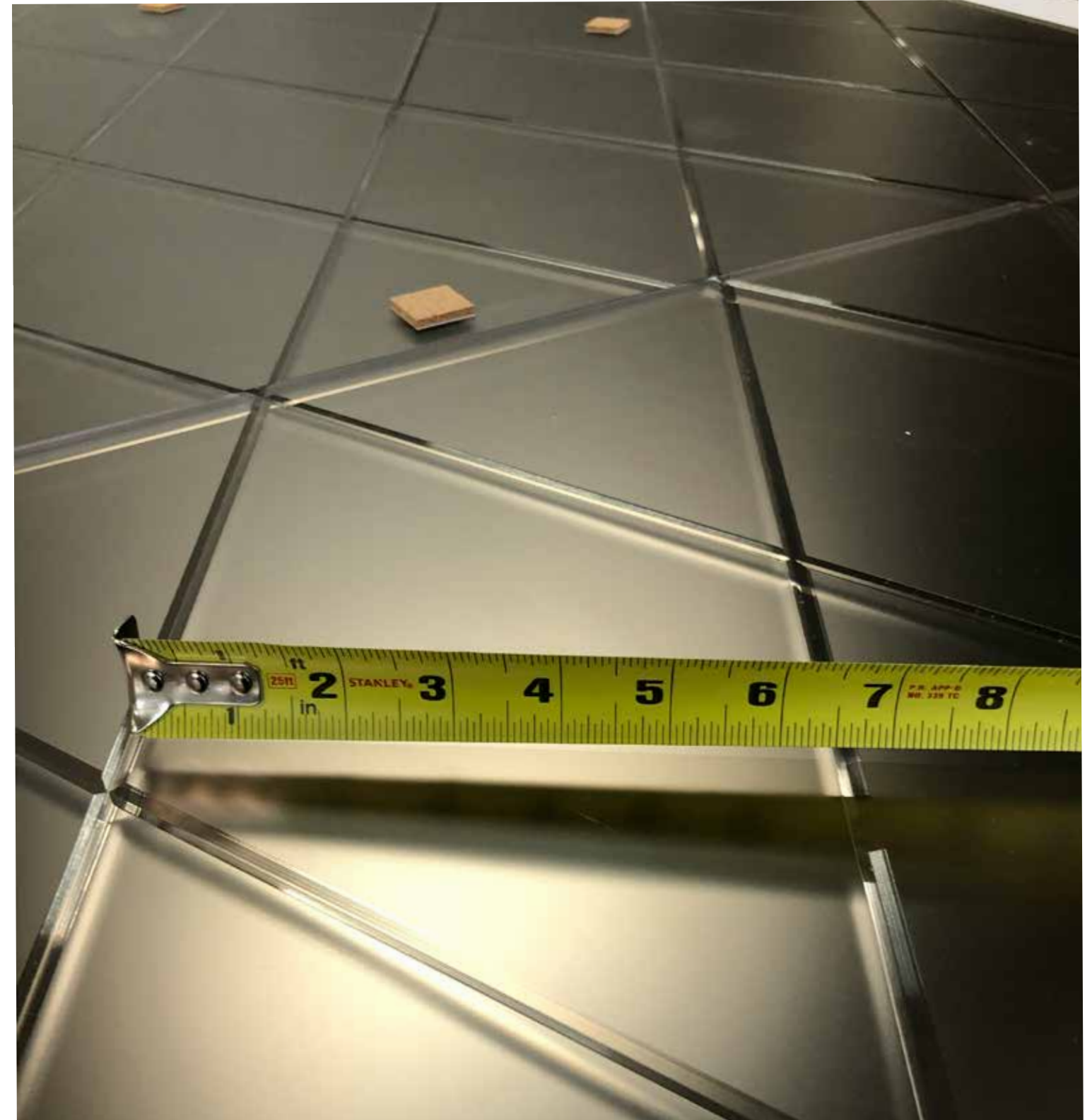


**High-Traffic Durability:** Ensuring the durability and safety of glass installations in a busy public space.

**Pattern Consistency:** Achieving perfect alignment for the diamond patterns on the claddings.

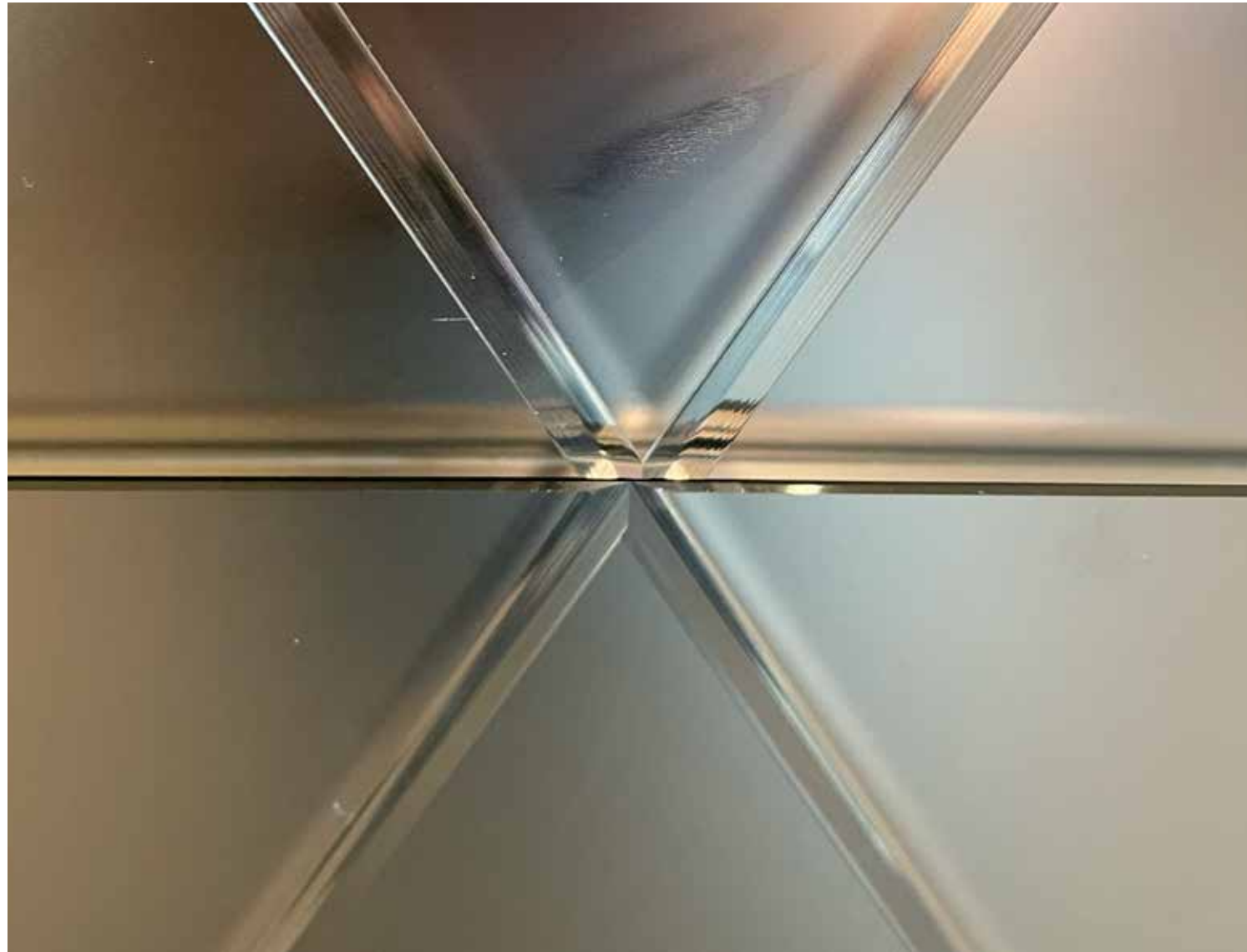
**Coordination with Construction:** Coordinating the installation with other ongoing construction activities.

**V-Groove Patterns:** Creating precise V-groove patterns in the laminated glass panels.





## AMTRAK: Strategic Solution Development



**Advanced Fabrication Techniques:** Developed techniques to achieve precise V-groove patterns for glass panels.

**Custom Diamond Solutions:** Engineered diamond-patterned glass claddings for aesthetic appeal.

**Graphic Integration:** Collaborated to integrate high-resolution graphics into glass walls.

**Detailed Planning and Coordination:** Streamlined installation process with detailed planning and coordination.



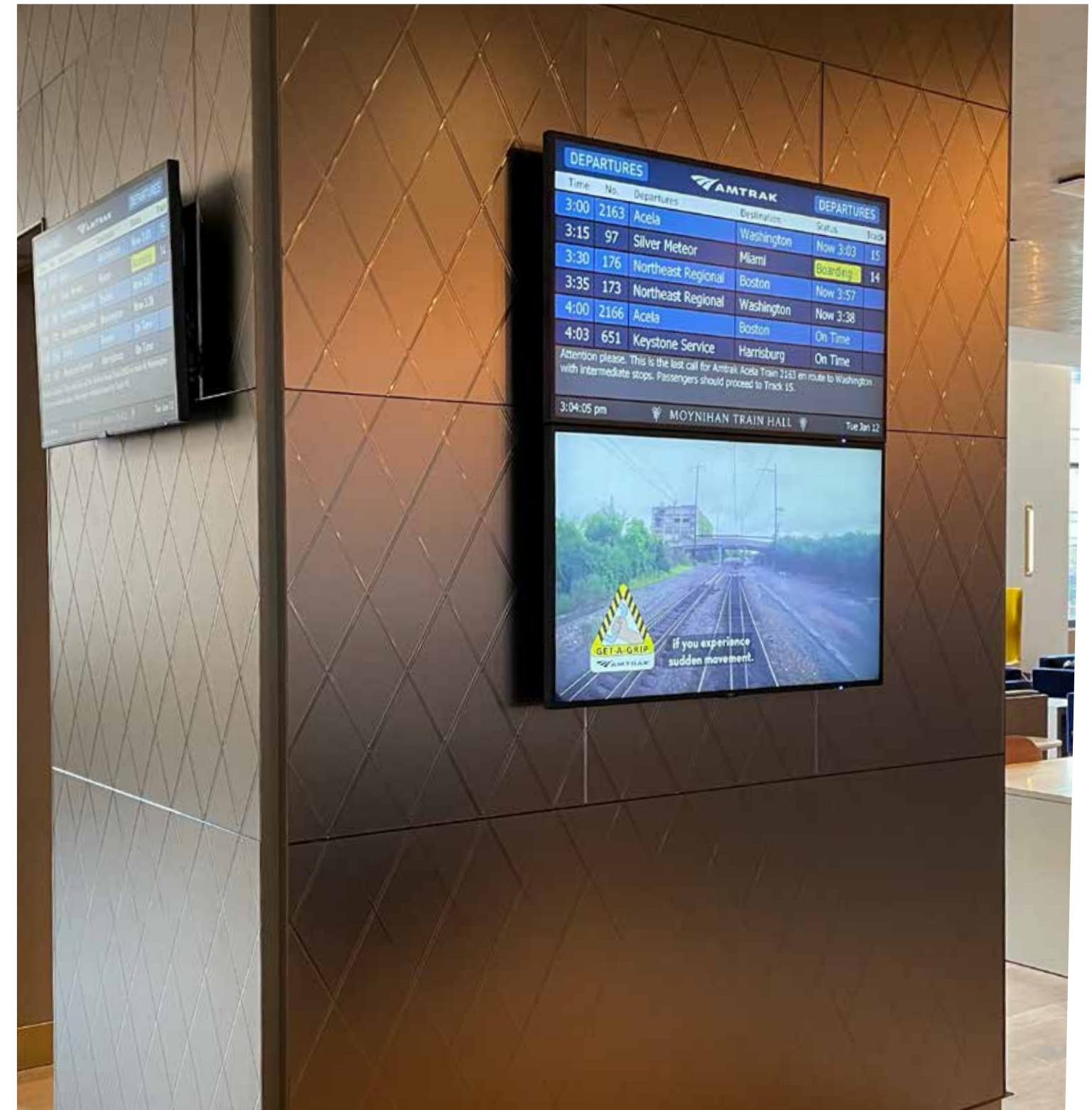
## AMTRAK: Implementation and Deployment

**Custom Glass Installation:** Installed custom laminated glass panels with V-groove patterns and diamond-patterned claddings.

**Pattern Alignment:** Ensured perfect alignment of diamond patterns on claddings.

**Minimized Disruption:** Planned installation to minimize disruption to lounge operations.

**Seamless Integration:** Ensured seamless integration of glass elements within the lounge.





AMTRAK





AMTRAK: GALLERY





## AMTRAK: SOLUTIONS

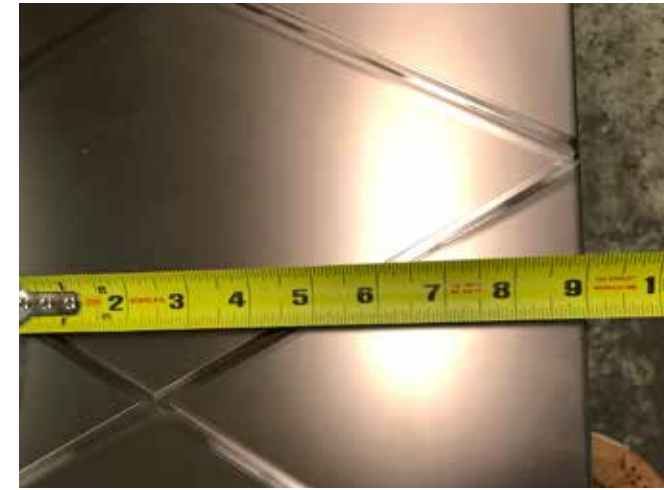
### ARCHITECTURAL SYSTEMS & MATERIALS



**Custom Laminated Glass Panels:** Installed with diamond pattern V-grooving for enhanced visual appeal.



**Durability in High-Traffic Areas:** Glass installations designed to withstand heavy public use.



**Advanced Glass Fabrication:** Techniques developed for precise V-groove patterns in laminated panels.



**Diamond-Patterned Column Claddings:** Engineered for aesthetic appeal and perfect pattern alignment.



**Integrated High-Resolution Graphics:** Enhanced the visual impact of glass walls in the lounge.



**Structural Glass Systems:** Utilized tempered and laminated panels meeting high safety standards.



## CHASE SAPPHIRE LOUNGE





## CHASE SAPPHIRE LOUNGE: Identifying Challenges



**Smooth Operation:** Ensuring custom sliding doors operated seamlessly and aligned with the lounge's high-end design.

**Safety Standards:** Crafting half-round ribs from fire-rated gypsum to meet safety requirements.

**Coordination with Airport Operations:** Managing the installation of bespoke elements within an active airport environment.

**Consistent Finishes:** Maintaining consistency in custom veneer finishes across multiple elements.





## CHASE SAPPHIRE LOUNGE: Strategic Solution Development



**Advanced Fabrication Techniques:** Developed techniques for seamless operation of custom sliding doors.

**Custom Gypsum Ribs:** Engineered half-round ribs from fire-rated gypsum for safety and elegance.

**Precise Veneer Application:** Collaborated to ensure consistent application of custom veneers.

**Detailed Planning and Coordination:** Streamlined installation process with detailed planning and coordination.



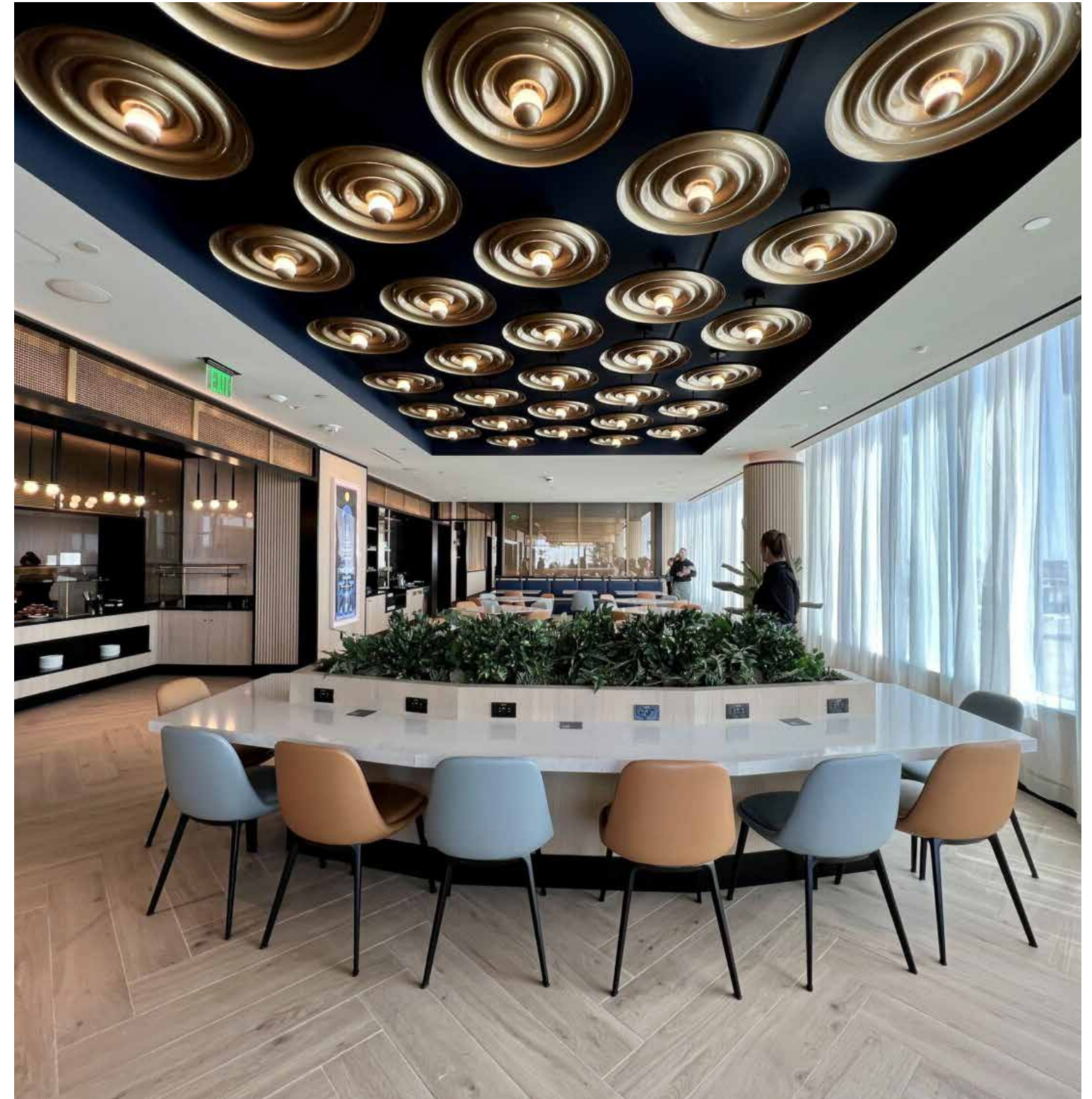
## CHASE SAPPHIRE LOUNGE: Implementation and Deployment

**Custom Element Installation:** Installed custom sliding doors and half-round ribs with precise craftsmanship.

**Smooth Operation:** Ensured seamless operation and alignment of sliding doors.

**Minimized Disruption:** Planned installation to minimize disruption to airport operations.

**Seamless Integration:** Ensured seamless integration of custom elements within the lounge.





**CHASE SAPPHIRE LOUNGE**





**CHASE SAPPHIRE LOUNGE: GALLERY**





**CHASE SAPPHIRE LOUNGE: GALLERY**





## CHASE SAPPHIRE LOUNGE: SOLUTIONS

### ARCHITECTURAL SYSTEMS & MATERIALS



**Sliding Door Systems:** Engineered for smooth operation and durability in high-traffic areas.



**Performance Standards:** Detailed engineering plans and extensive testing to meet all standards.



**Custom Veneers:** Adorned half-round ribs for a bespoke finish.



**Fire-Rated Gypsum Ribs:** Crafted for safety without compromising style.



**Gypsum Ribs:** Custom fabricated and veneered for aesthetic appeal and safety.





**UNITED LOUNGE: NEWARK**



## UNITED LOUNGE: Identifying Challenges

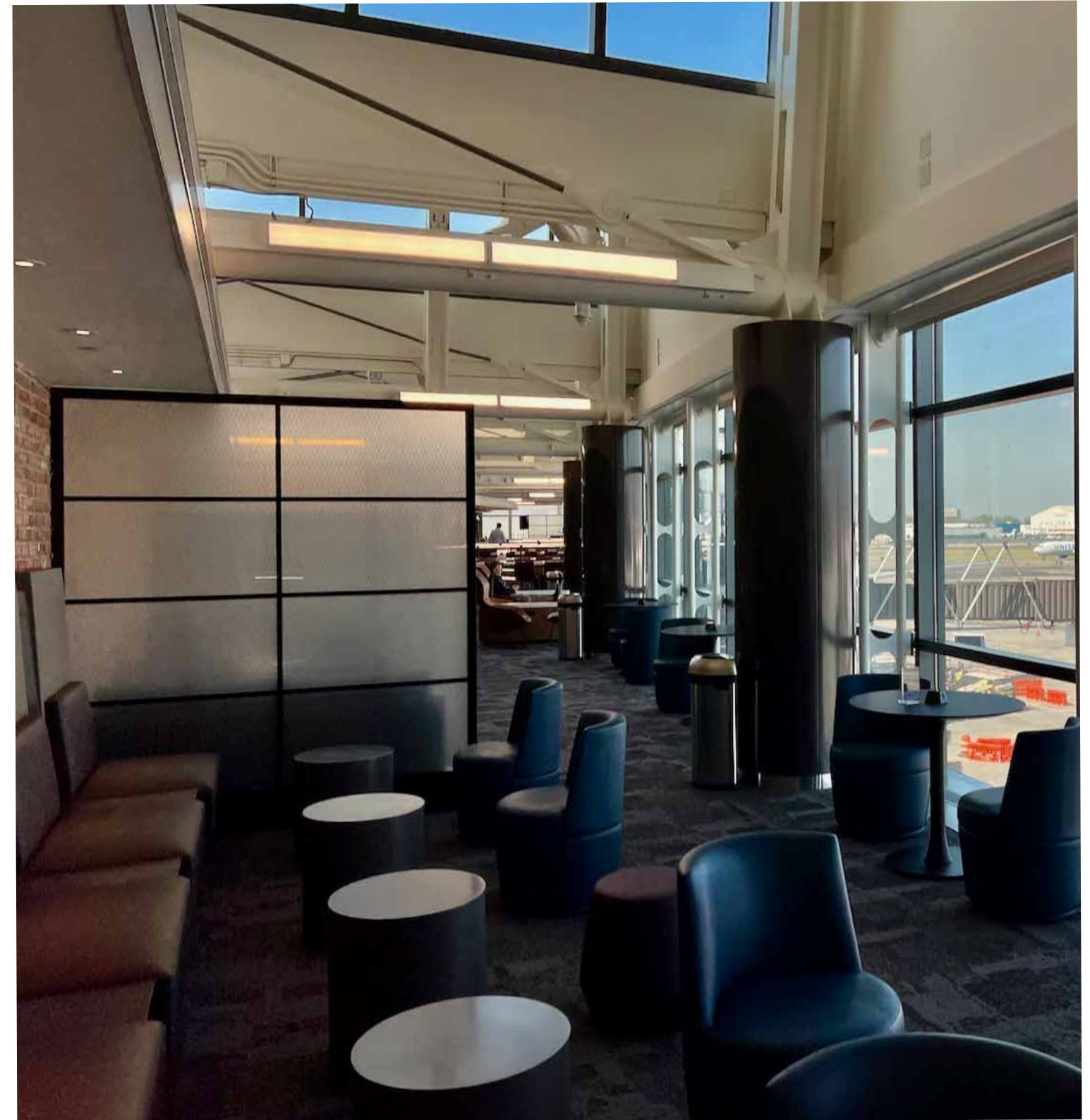


**High-Traffic Durability:** Ensuring the durability and safety of glass installations in a busy public space.

**Precise Specifications:** Achieving precise design specifications for custom laminated glass panels.

**Coordination with Airport Operations:** Managing the installation of bespoke elements within an active airport environment.

**Aesthetic Integration:** Integrating aesthetic elements without compromising safety and functionality.





## UNITED LOUNGE: Strategic Solution Development



**Advanced Fabrication Techniques:** Developed techniques to achieve precise specifications for glass panels.

**Custom Freestanding Solutions:** Engineered freestanding glass partitions for aesthetic appeal and functionality.

**Seamless Integration:** Collaborated closely to ensure seamless integration of all elements.

**Detailed Planning and Coordination:** Streamlined installation process with detailed planning and coordination.



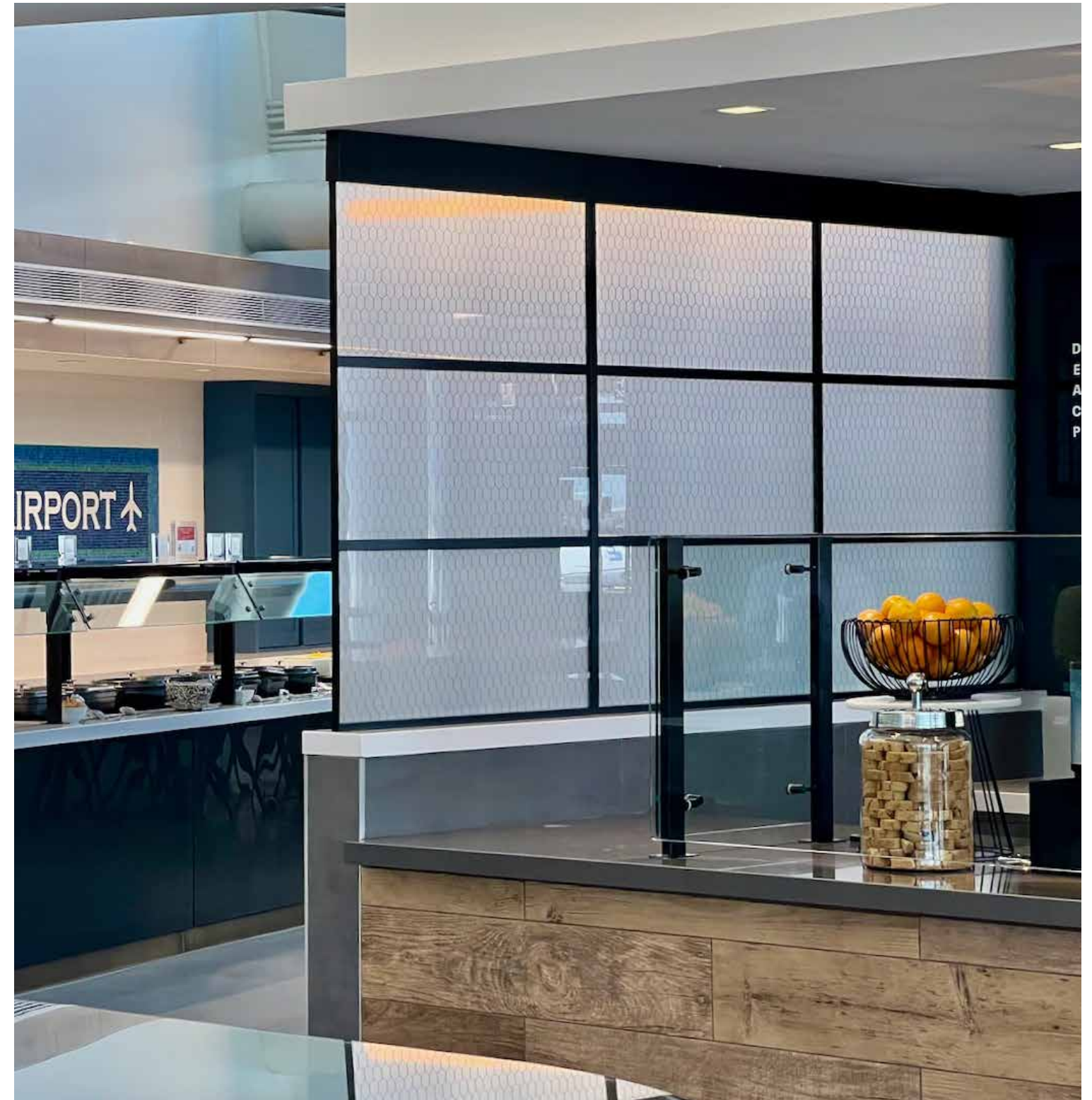
## UNITED LOUNGE: Implementation and Deployment

**Custom Glass Installation:** Installed custom laminated glass panels and freestanding partitions.

**Functional Division:** Created sophisticated space divisions within the lounge.

**Minimized Disruption:** Planned installation to minimize disruption to lounge operations.

**Seamless Integration:** Ensured seamless integration of custom elements within the lounge.





**UNITED LOUNGE**





**UNITED LOUNGE: GALLERY**





## DC CONVENTION CENTER





## DC CONVENTION CENTER: Identifying Challenges

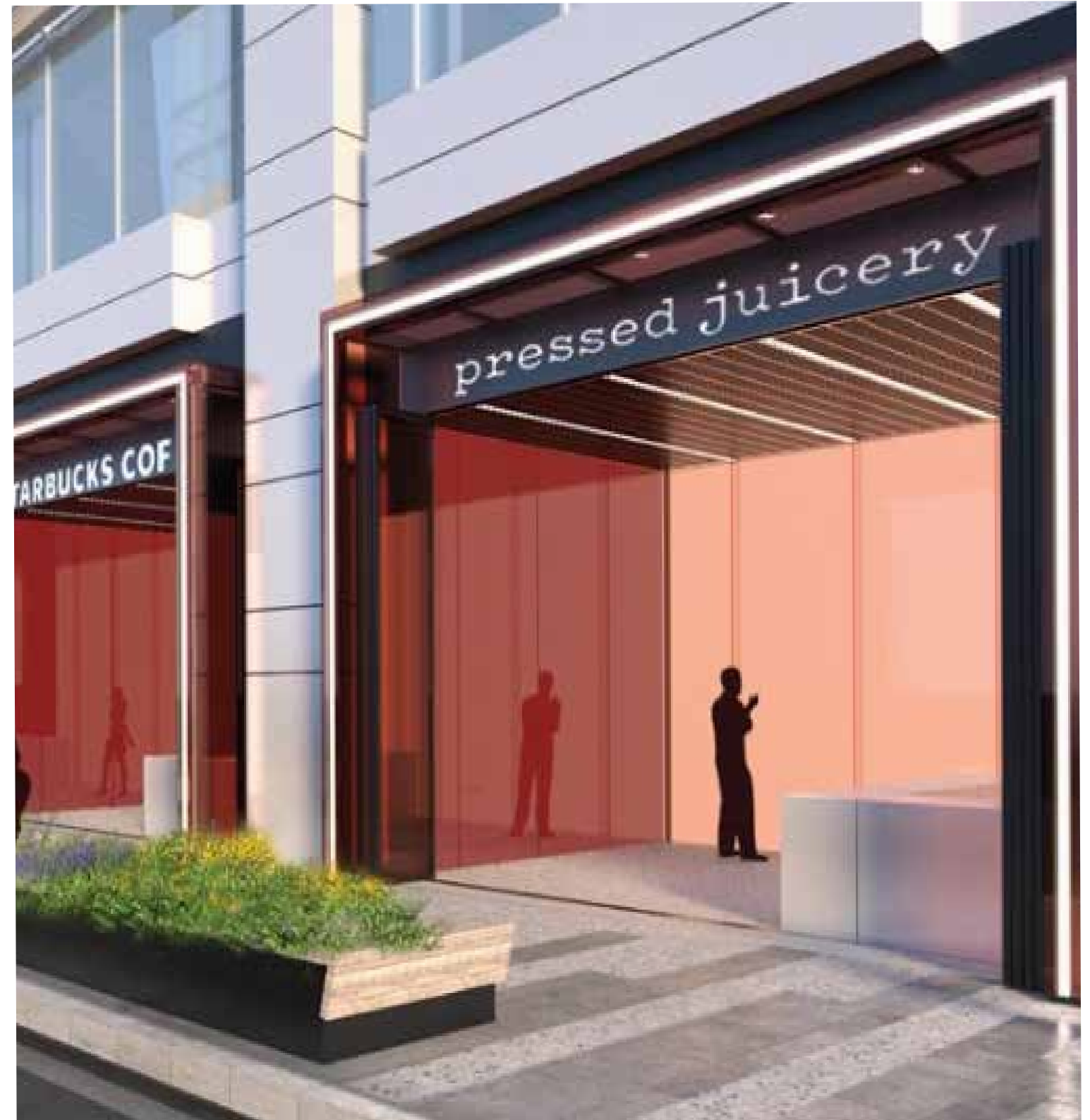


**Oversized, Flush Curtain Walls:** Achieving the design requirements for large, flush curtain walls.

**12-14ft Movable Walls:** Developing custom systems for tall movable walls.

**Design Constraints:** Navigating structural and flush design considerations.

**Standard Solutions Limitation:** Overcoming the limitations of standard solutions for unique project needs.





## DC CONVENTION CENTER: Strategic Solution Development



**glassSTACKWALL Systems:** Provided flexibility and superior acoustic performance.

**Custom Gradient Solutions:** Engineered gradient glass railings for privacy and aesthetic appeal.

**Graphic Integration:** Collaborated to integrate high-resolution graphics into glass walls.

**Detailed Planning and Coordination:** Streamlined installation process with detailed planning and coordination.



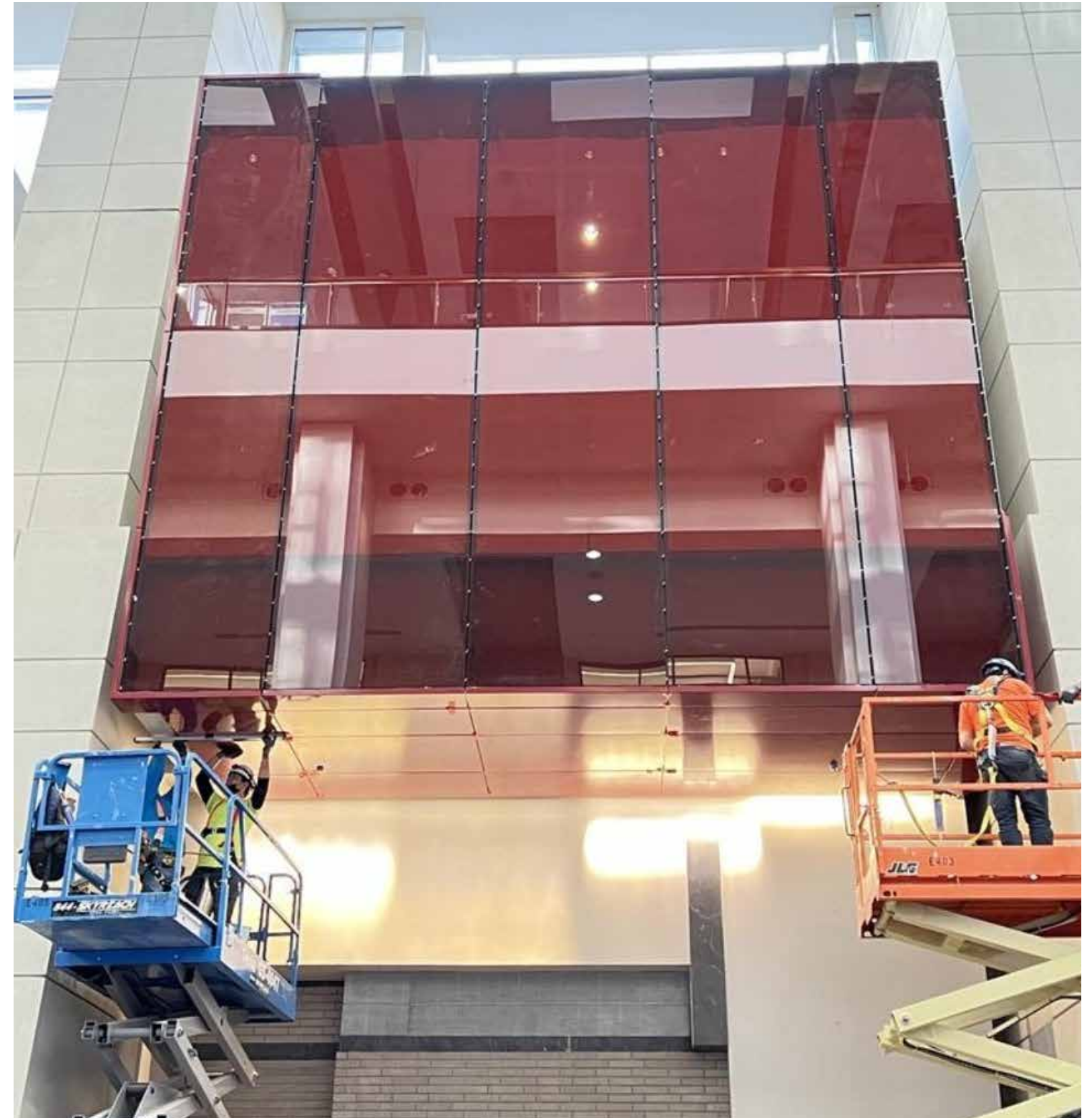
## DC CONVENTION CENTER: Implementation and Deployment

**Full-Height Glass Curtain Walls:** Installed using oversized glassXL panels.

**Natural Daylight Integration:** Created an ethereal visual effect with custom red structural glass.

**Minimized Disruption:** Planned installation to minimize disruption to convention center operations.

**Seamless Integration:** Ensured seamless integration of glass elements within the kiosks.





**DC CONVENTION CENTER**





## DC CONVENTION CENTER: GALLERY





## DC CONVENTION CENTER: SOLUTIONS

### ARCHITECTURAL SYSTEMS & MATERIALS



**glassSTACKWALL Systems:** Offering flexibility and openness with sliding glass panels.



**glassPORTAL System:** Featuring striking red laminated glass and concealed hardware.



**glassXL Panels:** Full-height, over-sized structural glass for curtain wall façades.



**metalWALLCLAD Panels:** Providing a durable and cohesive finish for interior and exterior surfaces.



**Fully Automated Door Actuators:** Ensuring seamless access and enhancing visitor experience.



**Unprecedented Movable and Laminated Glass Walls:** Featuring 18' tall movable walls and 25' tall red laminated glass panels at the back of the kiosks, hanging over the convention center.



## PROJECT LIST - LOCATION

### EDUCATION & MUSEUM

American Coll. of Healthcare Exec.  
 American Museum of Natural History  
 Brooklyn Museum  
 Bridgewater State University  
 Central Catholic HS  
 Chabad of Charleston  
 Columbia University  
 Credit Suisse  
 Gateway Center  
 Guggenheim Museum  
 Indiana University, Ernie Pyle Hall  
 LSU Beach Volleyball Stadium  
 Smithsonian  
 Skyscape  
 Texas A&M Research Facility  
 The New School  
 Uni. of Georgia West End Stadium  
 University of Illinois  
 University of Phoenix

### CORPORATE

8000 Avalon  
 Allstate  
 Amgen  
 Ashurst  
 Bergdorf Goodman  
 Billabong  
 Blackstone  
 Bloomberg  
 Carrilon Capital Mgt.  
 Capgemini  
 CBRE  
 CetraRuddy  
 Citibank  
 Citigroup  
 Coca-Cola  
 Conoco Phillips  
 Convene  
 Credit Suisse  
 CrossFirst

CSS Expansion  
 DaDonq  
 Discover  
 Domain Building 11  
 Dominion Workplace  
 EDF Trading  
 EMI Records  
 Empelcon  
 Facebook  
 Fannie Mae  
 Freddie Mac  
 Gersller LaRossee  
 Hargrove Engineers  
 Harman  
 Havas  
 Herman Miller  
 Holland and Knight  
 Hudson Advisors  
 Ignition One  
 Incyte Corporation  
 Infor  
 JP Morgan  
 JP Offices  
 Levi Strauss & Co.  
 Len A and Builders  
 McLaren  
 Major League Soccer  
 Martha Stewart Corp.  
 Mead Johnson  
 Mercedes-Benz  
 MetLife  
 Moet Hennessy  
 Mothra  
 MTV  
 NBC  
 Nike HQ Portland  
 NY Stock Exchange  
 Paul Hastings  
 Pillsbury  
 Pyreneeon  
 Raytheon  
 Ridgehill

Samsung  
 Schwartz Showroom  
 Scorpion Valencia  
 Smithsonian Channel  
 Splunk  
 TD Bank  
 Third Point Management  
 UFC HQ  
 Warner Media  
 Wells Fargo  
 Zenergy

### HOSPITALITY

Chase Bank  
 Clara Maass Medical Center  
 Detroit Medical Center  
 Hershey Medical Center  
 Jersey Shore Medical Center  
 Kakila Women & Children's Hospital  
 Memorial Sloan Kettering  
 Mt. Sinai  
 NE Medical Center Neuro Lab  
 New York Stern Cell Research  
 Penn Presbyterian Medical Center  
 Weill Cornell Medical Center  
 550 Madsion  
 25 Park Row  
 Baccarat Hotel  
 Equinox Hotel  
 Four Seasons Hotel  
 Hard Rock Hotel

### RETAIL

Bottega Veneta  
 Cadillac  
 Christian Dior  
 Downtown by Philippe Starck  
 Givenchy  
 Louis Vuitton

### HEALTH CLUB & SPA

225 E. 38th Street  
 1500K Fitness Center  
 David Barton Gym  
 Equinox  
 Fountain Place Fitness Center  
 Gym Source  
 Langan Chuan Body + Soul  
 Preserve Gym  
 Reebok  
 Silver Legacy Spa  
 Spa 88  
 The Gym at 8th and Main  
 Ventana Spa  
 YMCA Reston, VA  
 RETAIL

### TRANSPORTATION & CIVIC

Amtrak, New York Moynihan Train Hall  
 Austin Bergstrom Intl. Airport  
 BWI Airport  
 CBU Event Center  
 Delta Sky Lounges  
 Detroit Lions Training Facility  
 Easton Tower  
 George Bush Intl. Airport  
 Hobby Airport  
 LaGuardia Airport, TSA Check Point  
 LaGuardia Airport, Hyatt Place  
 Madison Square Garden  
 Newark Airport, Terminal One  
 Newark Airport, Terminal B  
 Oculus Center  
 PA Convention Center  
 PDX Airport  
 Philadelphia Intl. Airport  
 Ridgehill Mall  
 United Airlines T1 Clubs  
 Washington DC Convention Center  
 Westlake Center



## ARCHITECTS

AECOM  
 Arquitectonica  
 BIG  
 CallisonRTKL  
 Cannon Design  
 Centra Ruddy  
 Clodagh Design  
 CookFox  
 Corgan  
 DGA  
 DLR  
 Dyer Brown  
 Ewing Cole  
 Fogarty Finger  
 Fusion Design  
 FXCollaborative  
 Gensler  
 Gresham Smith  
 HBA  
 HDR  
 HKS  
 HLW  
 HOK  
 IA Interior  
 KPF  
 Leo A. Daly  
 NBBJ  
 Nelson  
 Perkins&Will  
 Perkins Eastman  
 Peter Marino  
 Populous  
 Rafael Vinoly  
 Rockwell  
 Smith Group  
 SOM  
 Stantec  
 Studios  
 Ted Moudis  
 TPG  
 Wilson  
 ZGF

## GENERAL CONTRACTORS

Tishman/AECOM  
 Hunter Roberts  
 Plaza Construction  
 JRM Construction  
 Structuretone  
 NewLine Construction  
 Triton Construction  
 CM & Associates  
 CC+M  
 OmniBuild  
 Shawmut  
 MK Construction  
 UAG  
 Rand  
 JT Magen  
 Gilbane  
 Benchmark  
 Suffolk  
 Turner

## OWNER-DEVELOPERS

Tishman/AECOM  
 Hunter Roberts  
 Plaza Construction  
 JRM Construction  
 Structuretone  
 NewLine Construction  
 Triton Construction  
 CM & Associates  
 CC+M  
 OmniBuild  
 Shawmut  
 MK Construction  
 UAG  
 Rand  
 JT Magen  
 Gilbane  
 Benchmark  
 Suffolk  
 Turner

## AWARDS

**2013:** Best of Year Award CARVART Metallic

**2014:** Best of NeoCon Silver Award CARVART Metallic

**GOOD DESIGN:** Chicago Athenaeum CARVART Metallic

**2015:** Best of NeoCon Silver Award CI Collection

**GOOD DESIGN:** Chicago Athenaeum CI Collection

**HIP Honoree:** CI Collection

**2016:** Best of NeoCon Gold Award CARVART Contract

**HIP Honoree:** glassBOX

**2017:** Best of Year Award Finalist CARVART by Soema

**Best of NeoCon Silver Award CARVART by Soema**

**HIP Honoree:** glassCUBE

**Metropolis Likes:** glassCUBE

**2019:** Best in Show GlassBuild glassXL

**2020:** Best of Year Awards CARVART by GUSTAFS

**Best of NeoCon:** GOLD Award modilair/WALLCLAD



CARVART®