



CARVART

CASE STUDY

200 EAST 83rd STREET

## 200 EAST 83rd STREET



# 200 EAST 83rd STREET

## CASE STUDY

### INTRODUCTION

CARVART was engaged to deliver bespoke architectural metalwork for the prestigious residence at 200 East 83rd Street in New York City, in collaboration with RAMSA Architects.

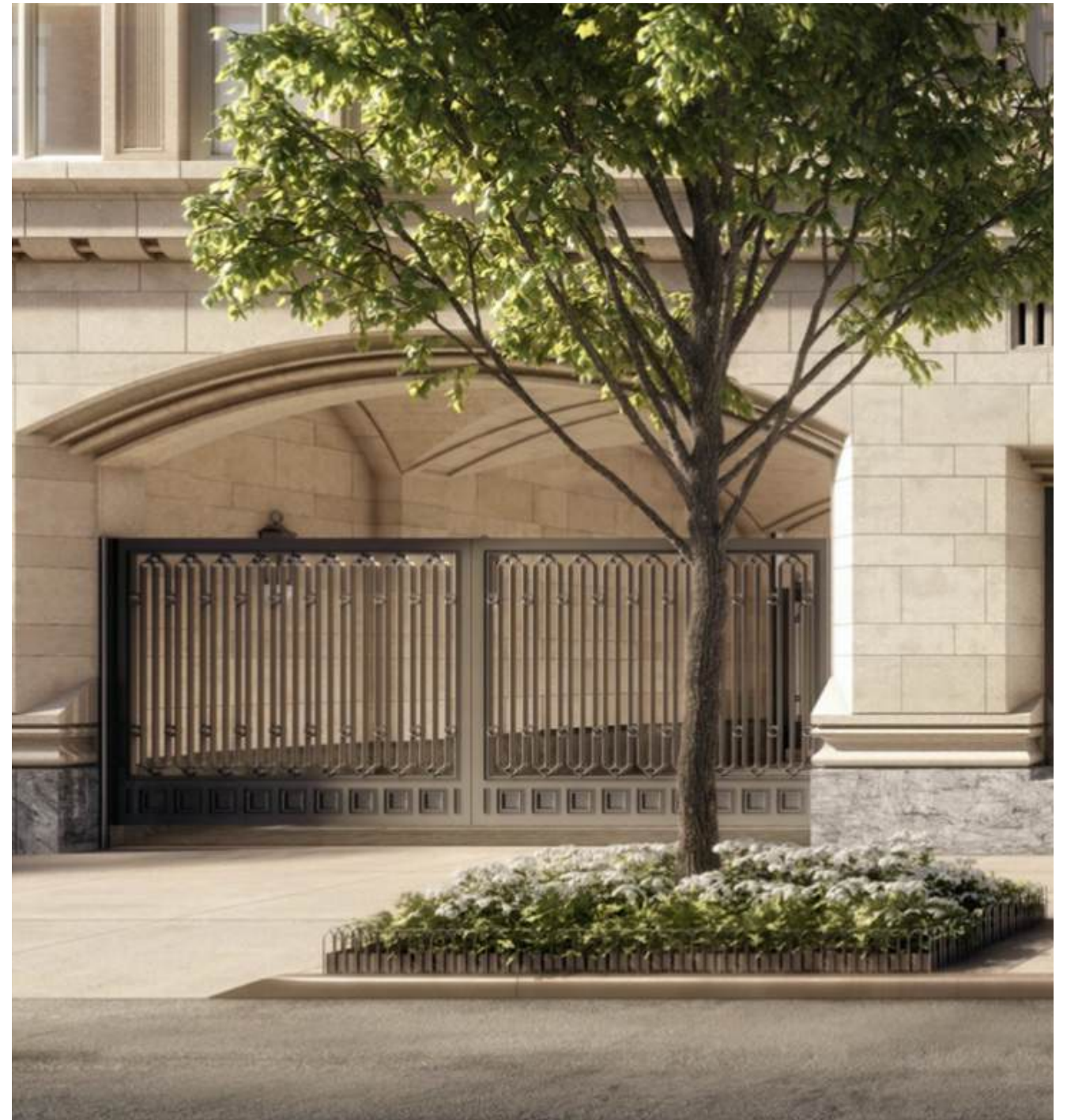
The scope centered on a fully custom-designed metal canopy, engineered, prefabricated, and installed as a singular unit—streamlining site coordination and significantly reducing installation time. This approach not only ensured precision and quality control, but also provided measurable cost savings to the project team.

In addition, CARVART fabricated custom exterior gates and entry doors, meticulously finished to align with the building's refined material palette. Complementing these elements, decorative metal and glass railings were developed to integrate seamlessly with the overall architectural language—balancing durability, performance, and elevated design.

Through a combination of advanced fabrication, thoughtful engineering, and a design-assist approach, CARVART contributed to a cohesive and highly crafted exterior expression befitting one of Manhattan's premier residential developments.

**CLIENT:** Robert A.M. Stern Architects

**SCOPE:** Metal Canopy, Entry Gates, Exterior Doors & Guard Rails





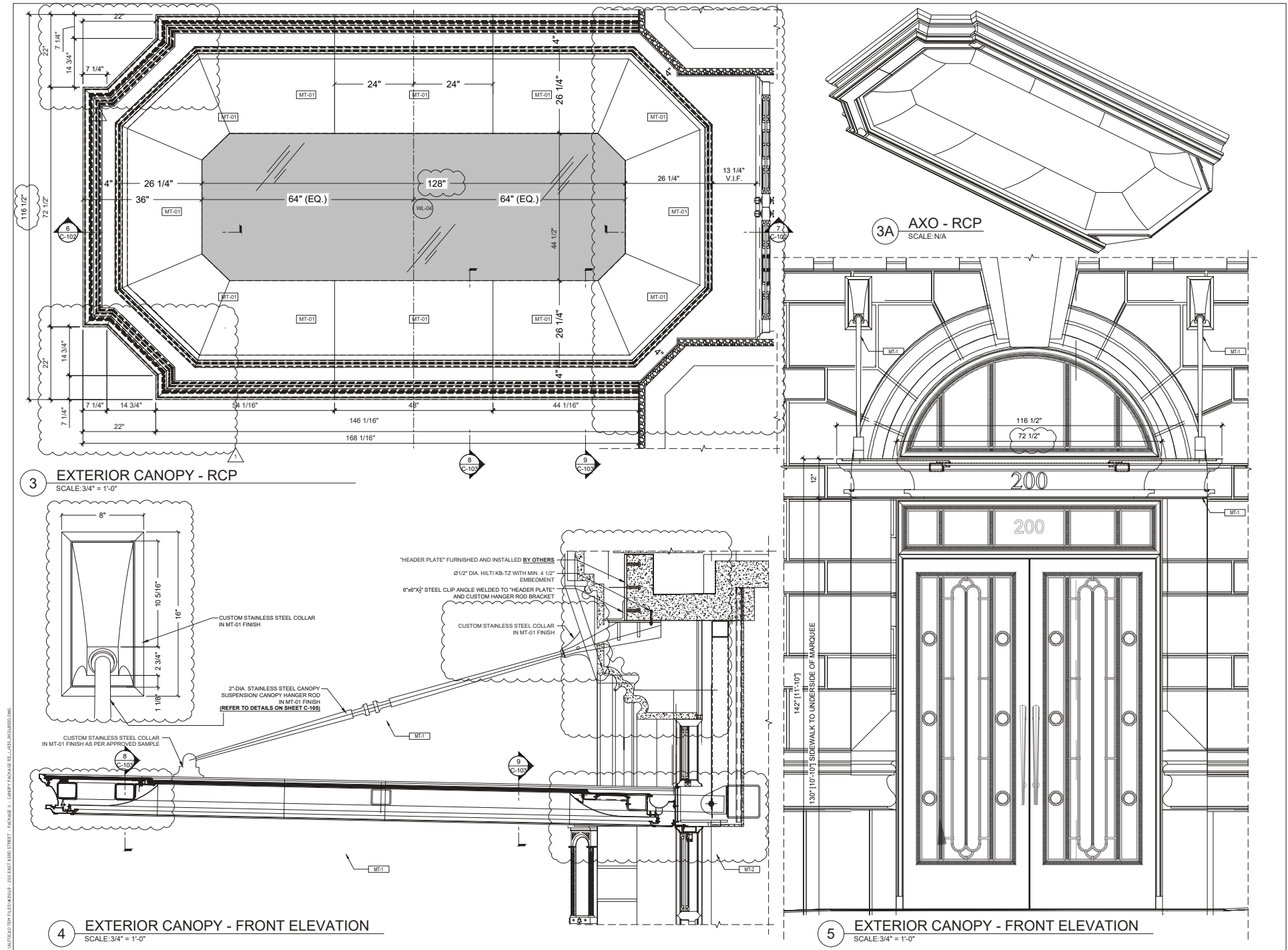
## Grand Entrance PREFABRICATED CANOPY

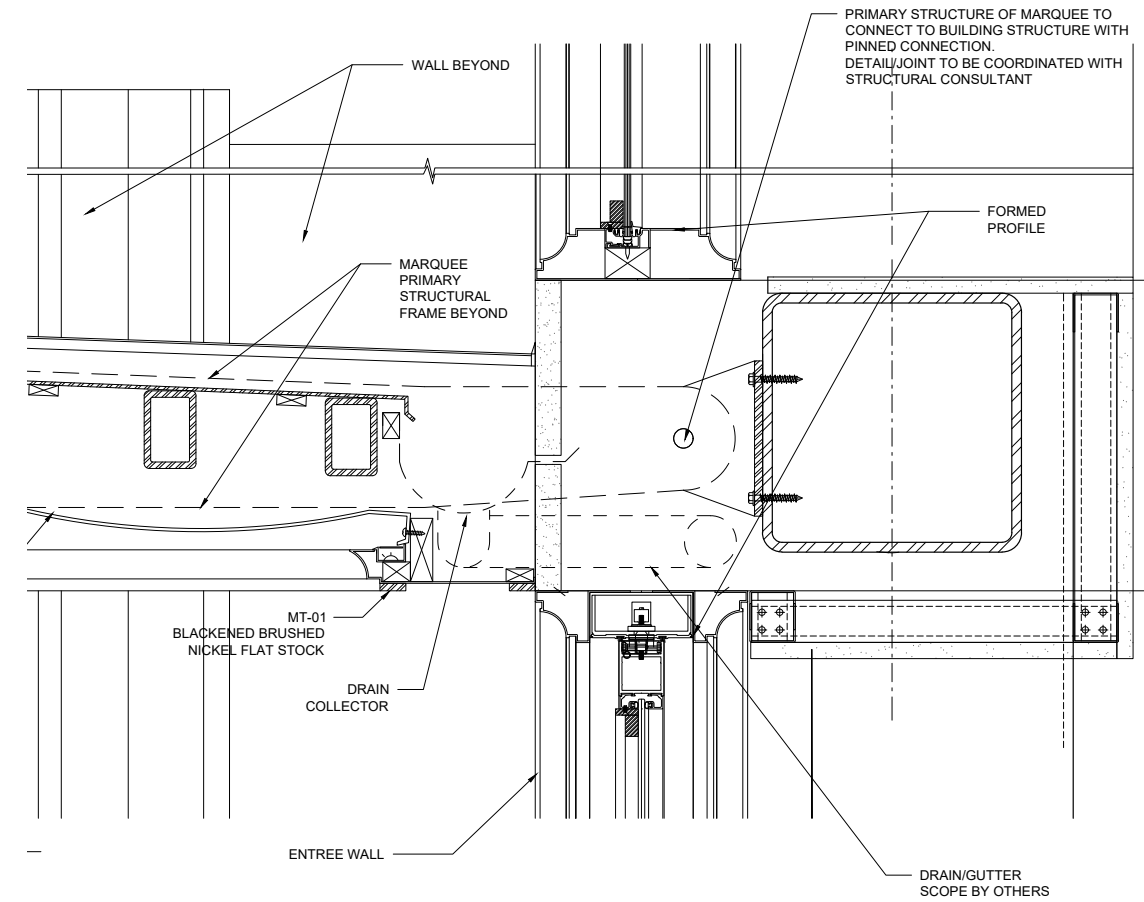
The metalwork itself was a study in nuance and alignment. With adjacent architectural elements operating within a similarly refined palette, every detail—from finish formulation to joint articulation—was carefully developed to maintain visual continuity. CARVART executed custom finishes across the canopy, entry doors, gates, and railings, ensuring a seamless integration of materials across all exterior elements. The result is a unified composition that brings rhythm, depth, and craftsmanship to the façade—where performance is embedded within design, and design is elevated through precision.



# Grand Entrance Engineering Development

CARVART completed a custom awning, an ornate steel gate, doors and railings at this location implementing a pre-fabricated approach utilizing our in-house engineering team to design a system utilizing structural calculations and our many years of experience.





# Installation

## PREFABRICATED CANOPY

A defining advantage of the canopy was CARVART's prefabrication strategy, which allowed the entire structure to be delivered and installed as a single, fully assembled unit. This approach dramatically compressed the installation timeline—transforming what would typically require days of field assembly into a highly coordinated, efficient lift and set operation completed within hours.



# Final Result

## PREFABRICATED CANOPY

A defining advantage of the canopy was CARVART's prefabrication strategy, which allowed the entire structure to be delivered and installed as a single, fully assembled unit. This approach dramatically compressed the installation timeline—transforming what would typically require days of field assembly into a highly coordinated, efficient lift and set operation completed within hours.





## Parking Entrance ORNAMENTAL GATES

Complementing the canopy and entry sequence, CARVART designed and fabricated a series of fully custom, motorized gates that extend the architectural language of the façade into the threshold itself. Crafted from finely detailed steel with an ornate, rhythmic pattern, the gates balance classical inspiration with modern precision—serving as both a security element and a defining visual feature.



## Final Result ORNAMENTAL GATES

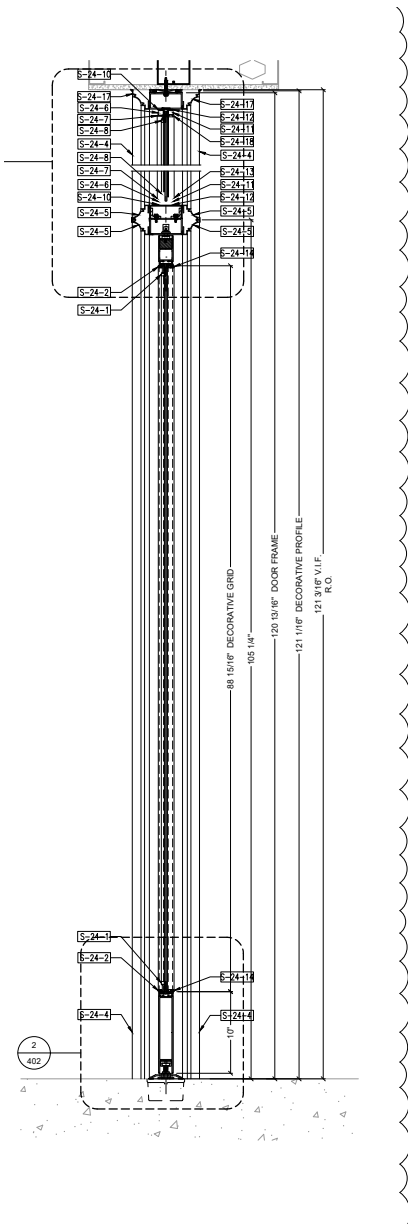
As with the canopy, prefabrication played a critical role in execution. By delivering complete gate assemblies to site, CARVART reduced installation time, minimized field adjustments, and ensured consistency across all components. The bespoke finish—developed to match adjacent architectural metalwork—further reinforces a cohesive palette across gates, doors, and canopy.



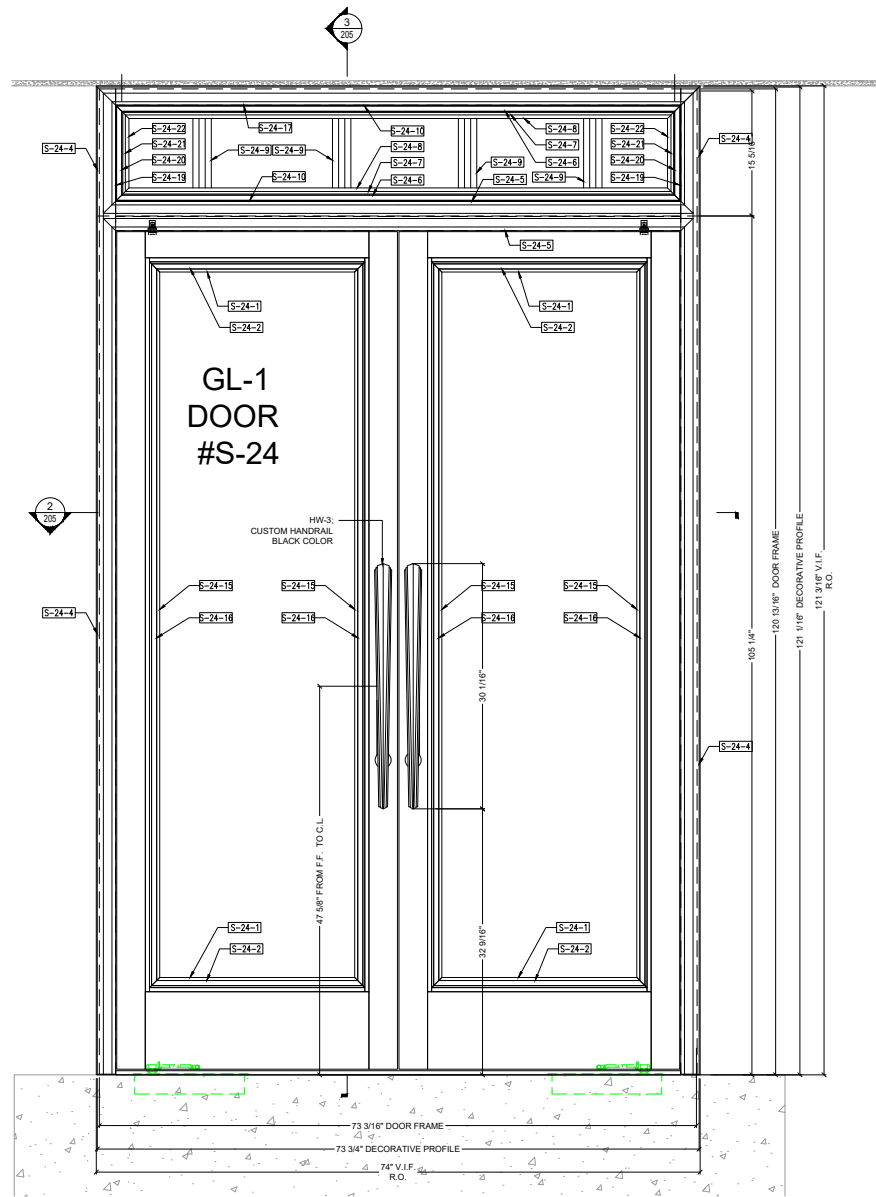


# Exterior Doors

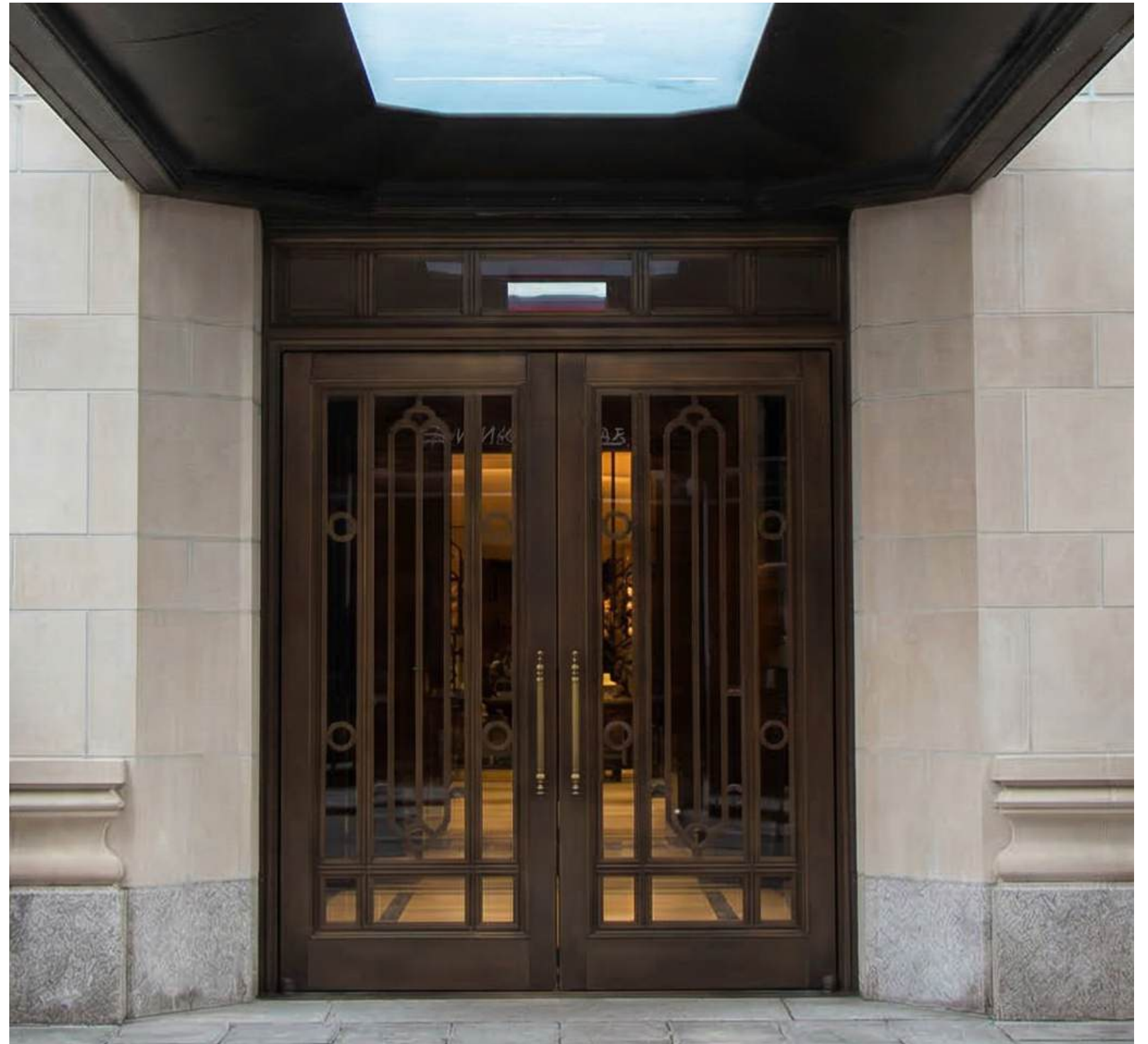
## Custom Metal Finishes



VERTICAL SECTION @ DOOR S-24  
SCALE: 1/2" = 1'-0"



1 EAST ELEVATION @ DOOR S-24 (VIEW FROM OUTSIDE)  
SCALE: 1/2" = 1'-0"



# Exterior Doors

## Custom Metal Finishes



CARVART®