



CARVART

CASE STUDY

550 MADISON AVE

## 550 MADISON AVE



# 550 MADISON AVE

## CASE STUDY

### INTRODUCTION

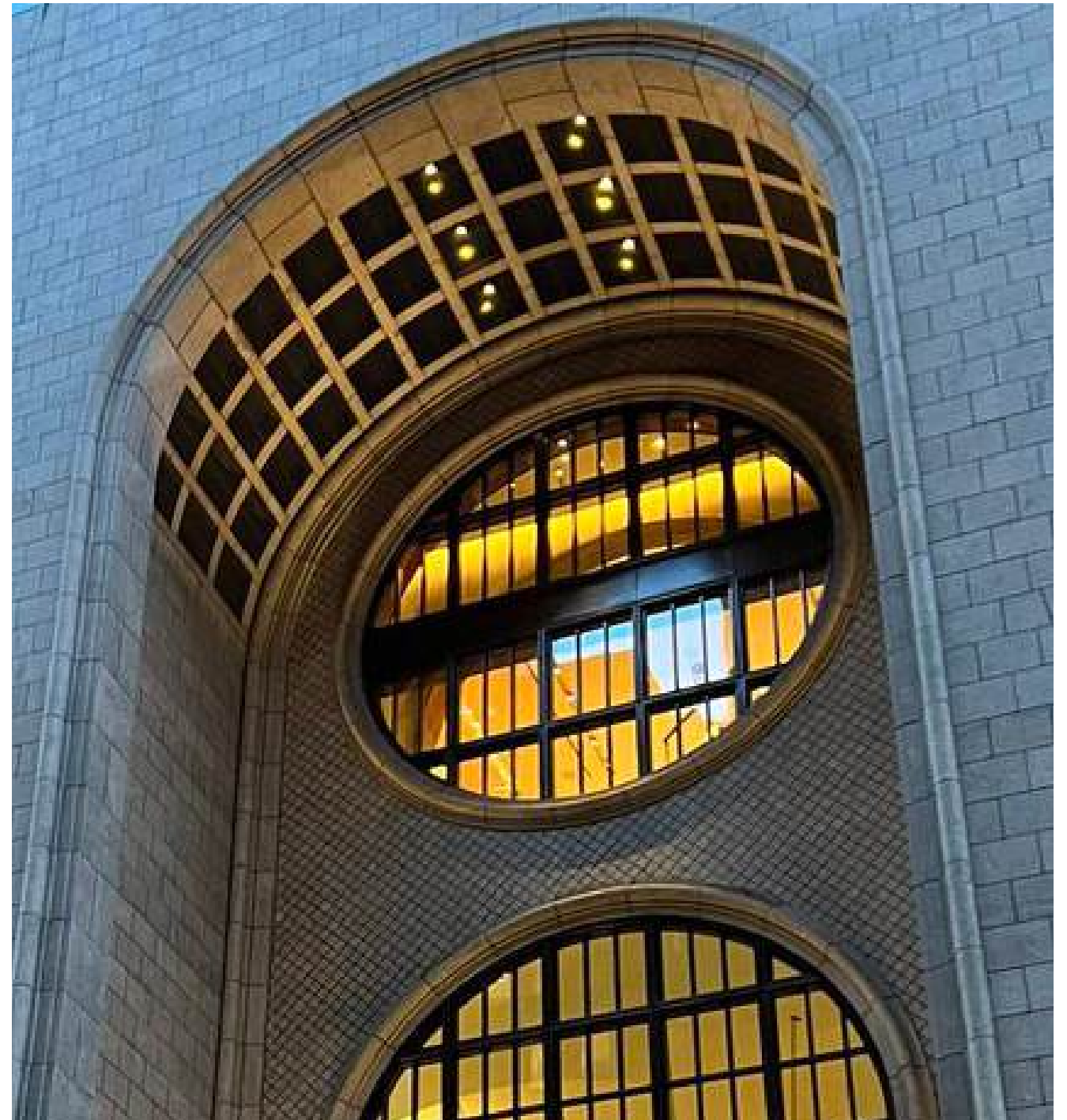
550 Madison Avenue is a landmark New York property redefined through precise craftsmanship and a refined material palette. In collaboration with Rockwell Architects, CARVART delivered a comprehensive scope of custom metal and glass systems, including exterior canopies, entry gates, portals, cladding, interior doors, and architectural partitions.

Balancing modern performance with historic context, the work integrates hand-finished bronze, layered metal mesh, fluted glass, and precision-engineered systems to create continuity across the building. Each element was custom fabricated to ensure durability, visual cohesion, and seamless integration.

The result is a sophisticated architectural environment where design clarity, material depth, and engineering precision come together to elevate the experience of 550 Madison Avenue.

**CLIENT:** Rockwell Architects

**SCOPE:** Metal Cladding, Interior Doors, Partitions & Screens, Mirrors, Architectural Metals and Accessories



# 550 MADISON Solutions



**Hand-Finished Brushed Bronze:** Used in doors, cladding, accents.



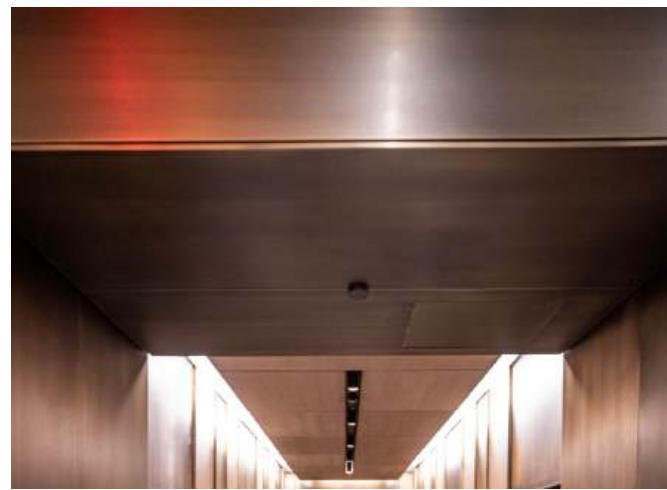
**Custom Bronze Mesh Panels:** Applied in doors and walls for aesthetics.



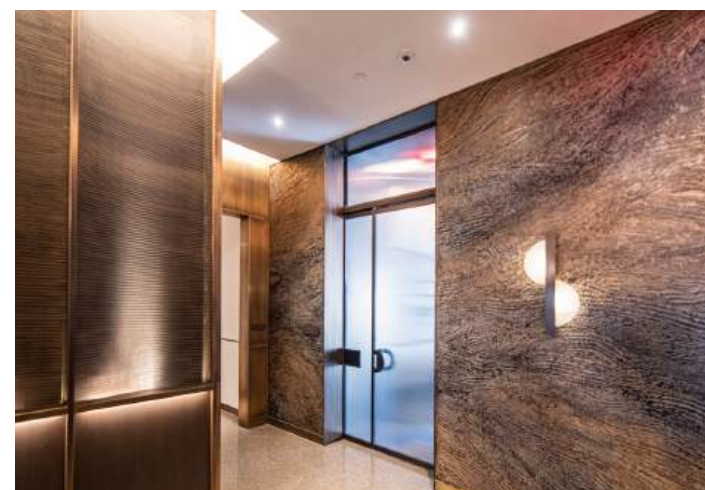
**Telescopic Partition:** A custom metal screen incorporated into our telescopic door system



**High-Quality Glass:** Employed in STACKWALL and Telescopic systems.



**Portal wallCLAD:** Custom finished panels throughout entrances



**Glass & Metal Doors:** Enhances continuity and sophistication.



**Hardware + Accessories:** A wide range of additional scopes from mirrors, light covers, and custom frames

# Identifying Challenges

## CARVART Solutions

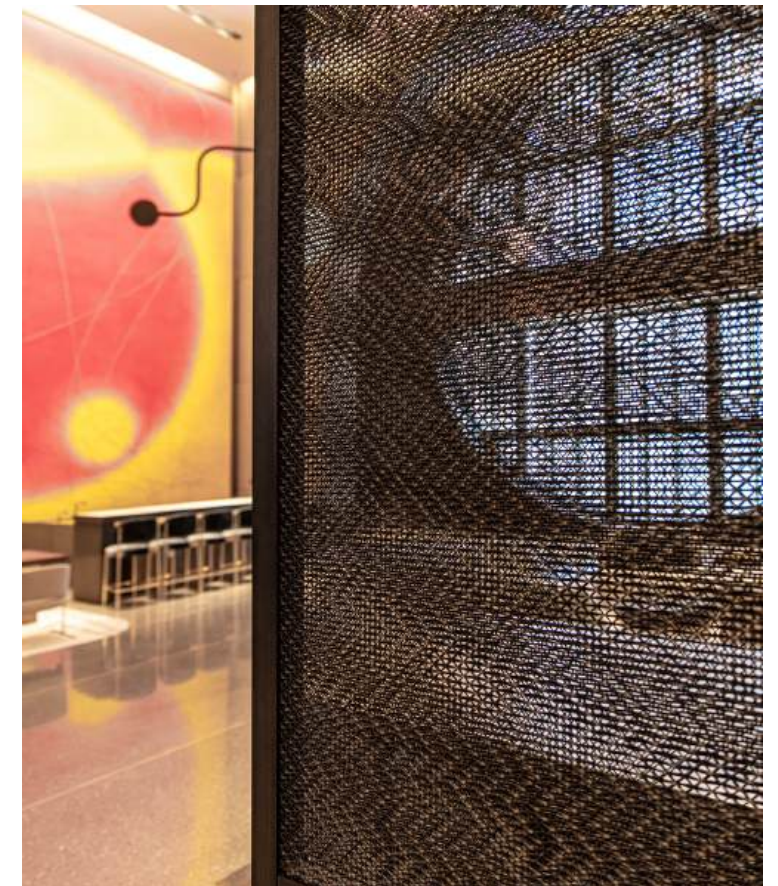
**Architectural Integration:** Modern designs meet historic architecture.

**Aesthetic Enhancement:** Elevating aesthetics with high-end materials.

**Functional Requirements:** Privacy and openness balanced effectively

**Material Durability:** Durable materials for luxury settings.

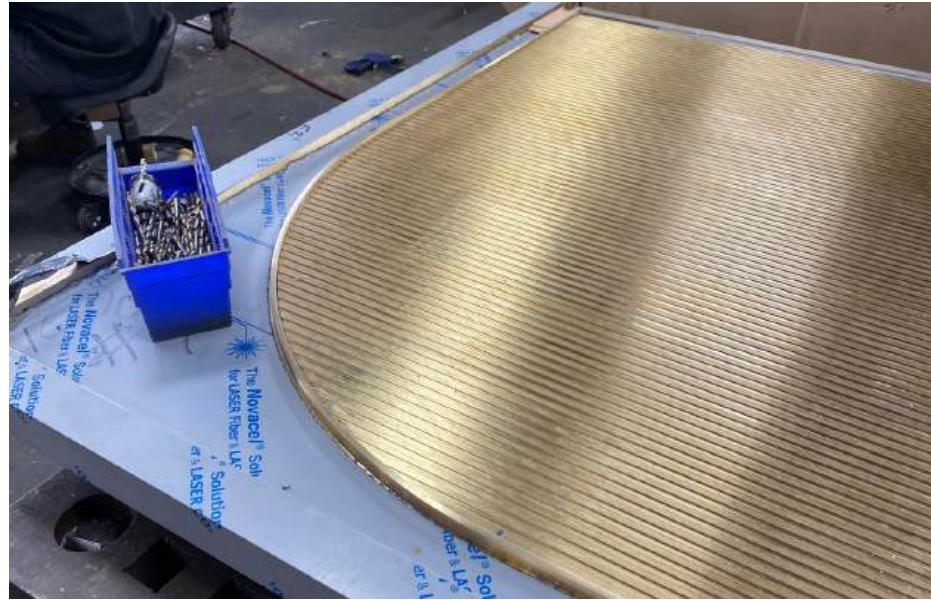
**Design Consistency:** Cohesive aesthetic throughout the project.





## Interior Doors Glass & Metal Solutions

The metalwork itself was a study in nuance and alignment. With adjacent architectural elements operating within a similarly refined palette, every detail—from finish formulation to joint articulation—was carefully developed to maintain visual continuity. CARVART executed custom finishes across the canopy, entry doors, gates, and railings, ensuring a seamless integration of materials across all exterior elements. The result is a unified composition that brings rhythm, depth, and craftsmanship to the façade—where performance is embedded within design, and design is elevated through precision.



# Interior Doors

## Glass & Metal Solutions

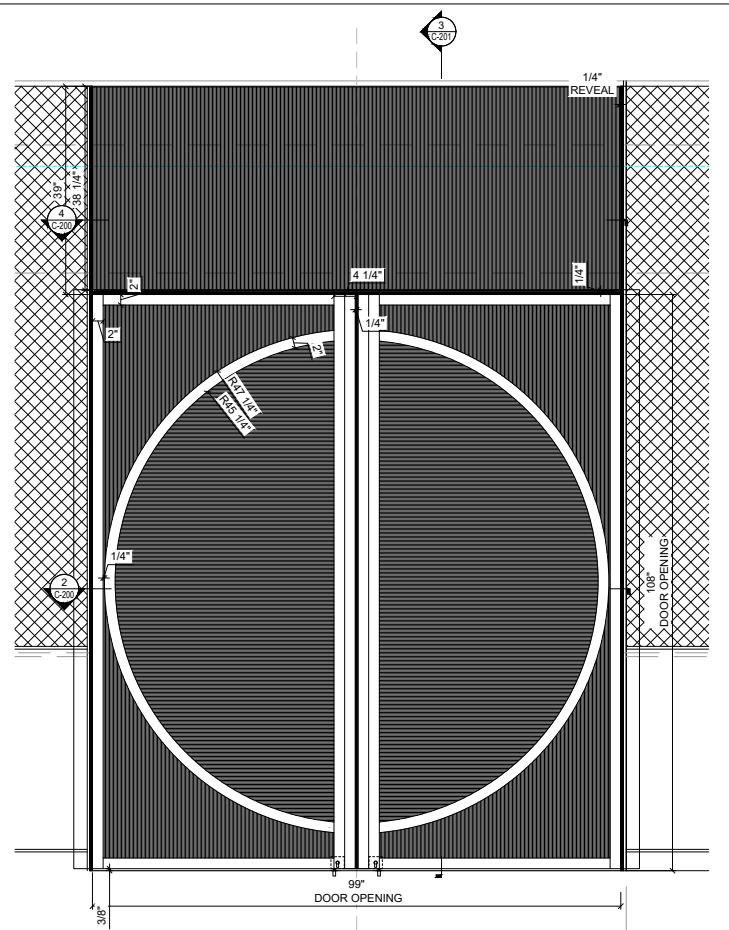
**Innovative Glass Solutions:** GlassSTACKWALL for elegance and privacy.

**Custom Bronze Doors:** Hand-finished doors blend with classic architecture.

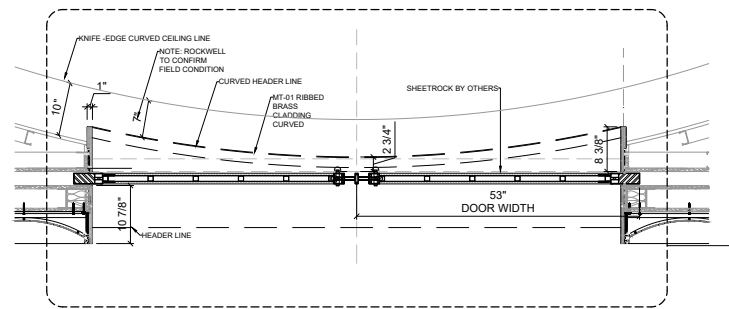
**Enhanced Entryways:** GlassDOOR systems with bronze mesh.

**Luxury Cladding:** Extensive brushed bronze enhances luxury.

**Artistic Accents:** Fluted glass and bronze transform Club Level.



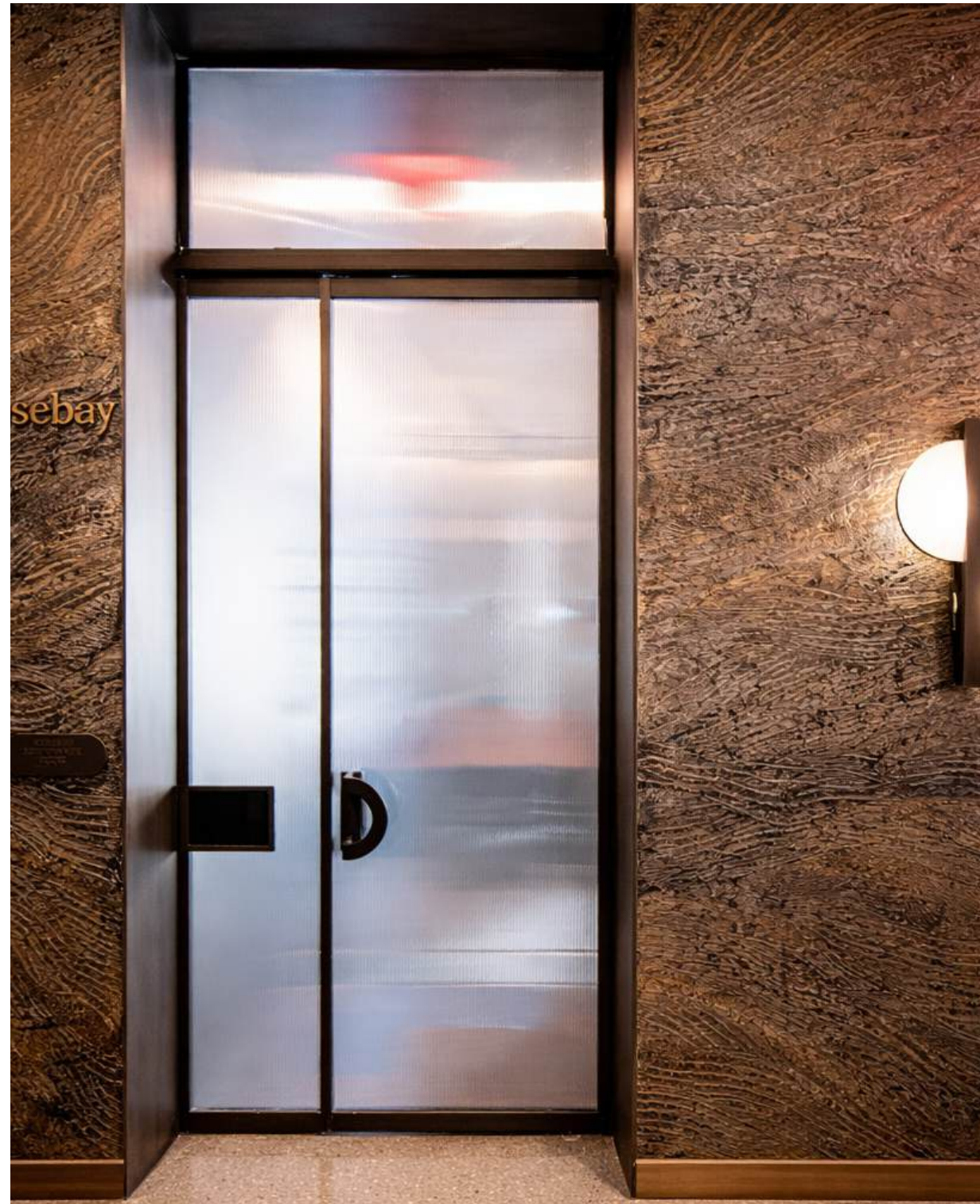
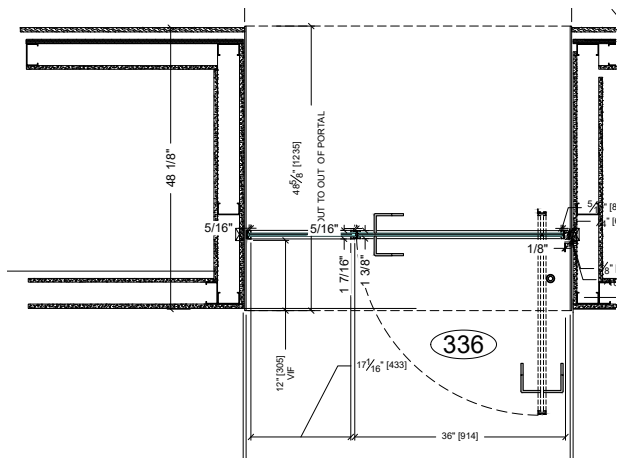
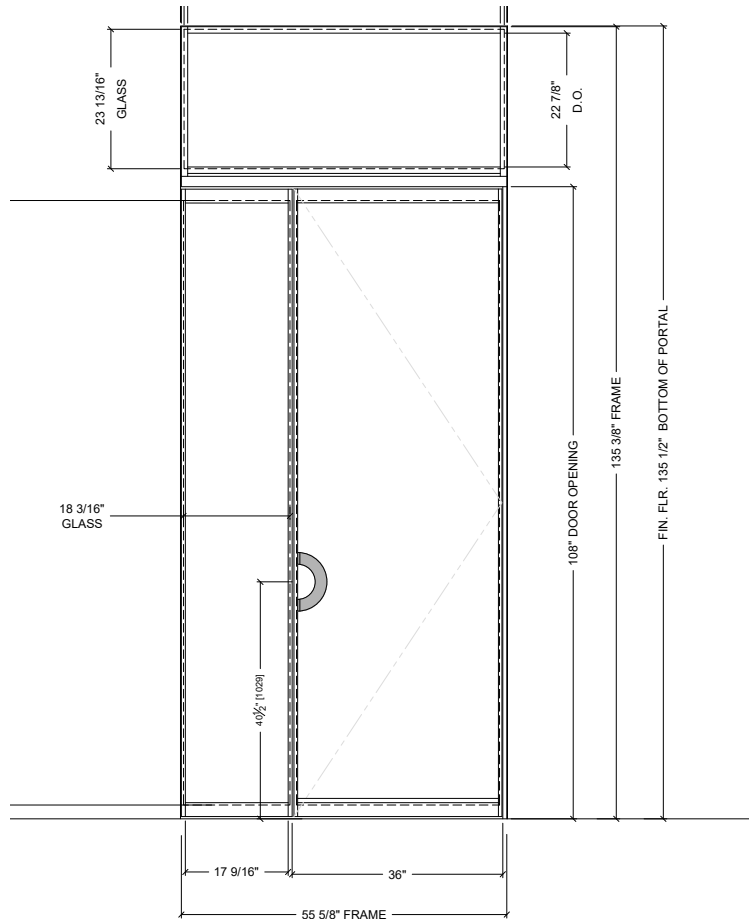
1 DOOR 322 ELEVATION FROM HALLWAY  
SCALE: 1" = 1'-0"



2 DOOR 322 PLAN  
SCALE: 1" = 1'-0"



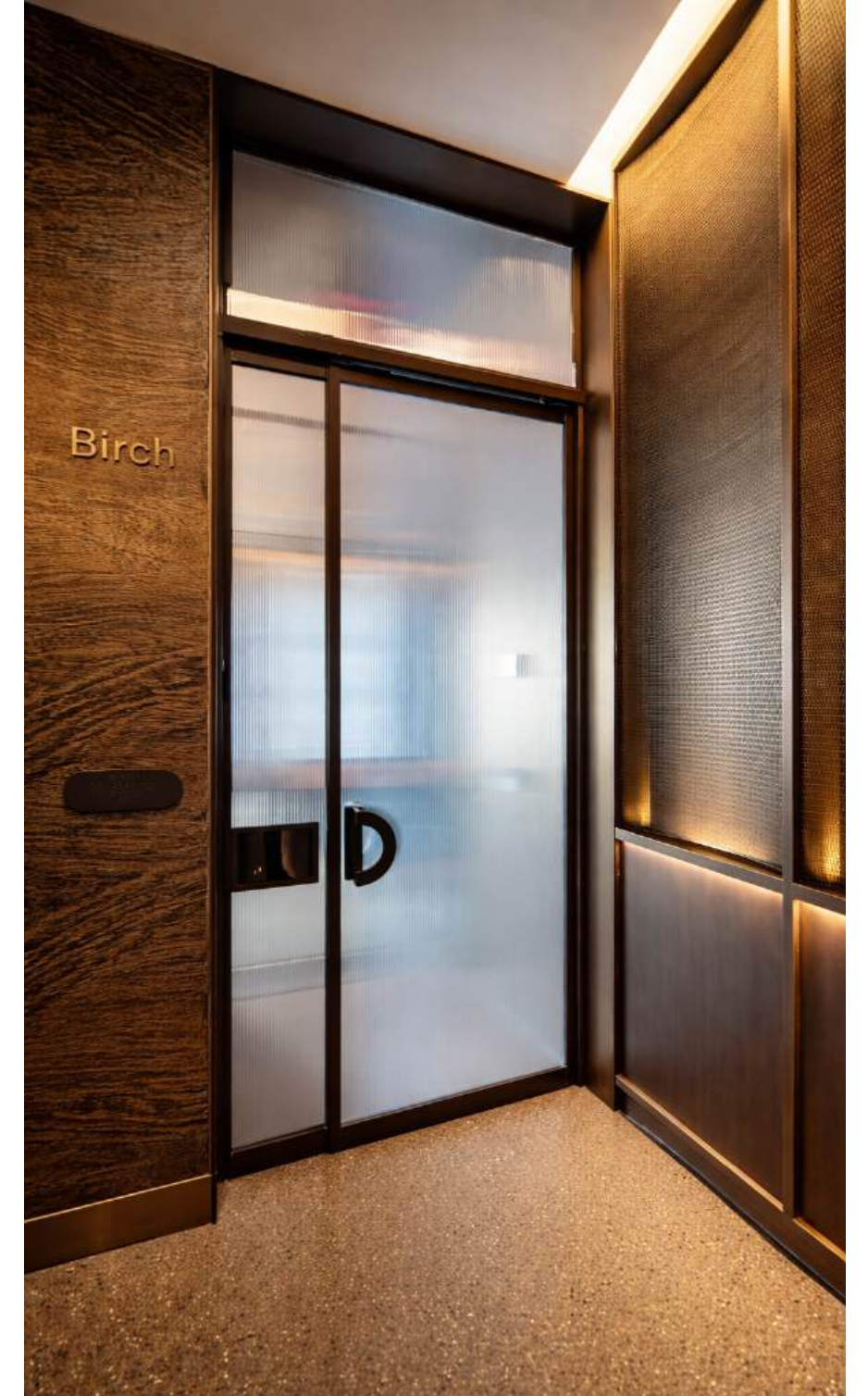




## Interior Doors Custom Hardware

**Innovative Solutions:** CARVART's custom hardware and finish matching specialties enhance the space and bring added value to each project we do by tying together interior elements and bringing one-of-a-kind design to life.



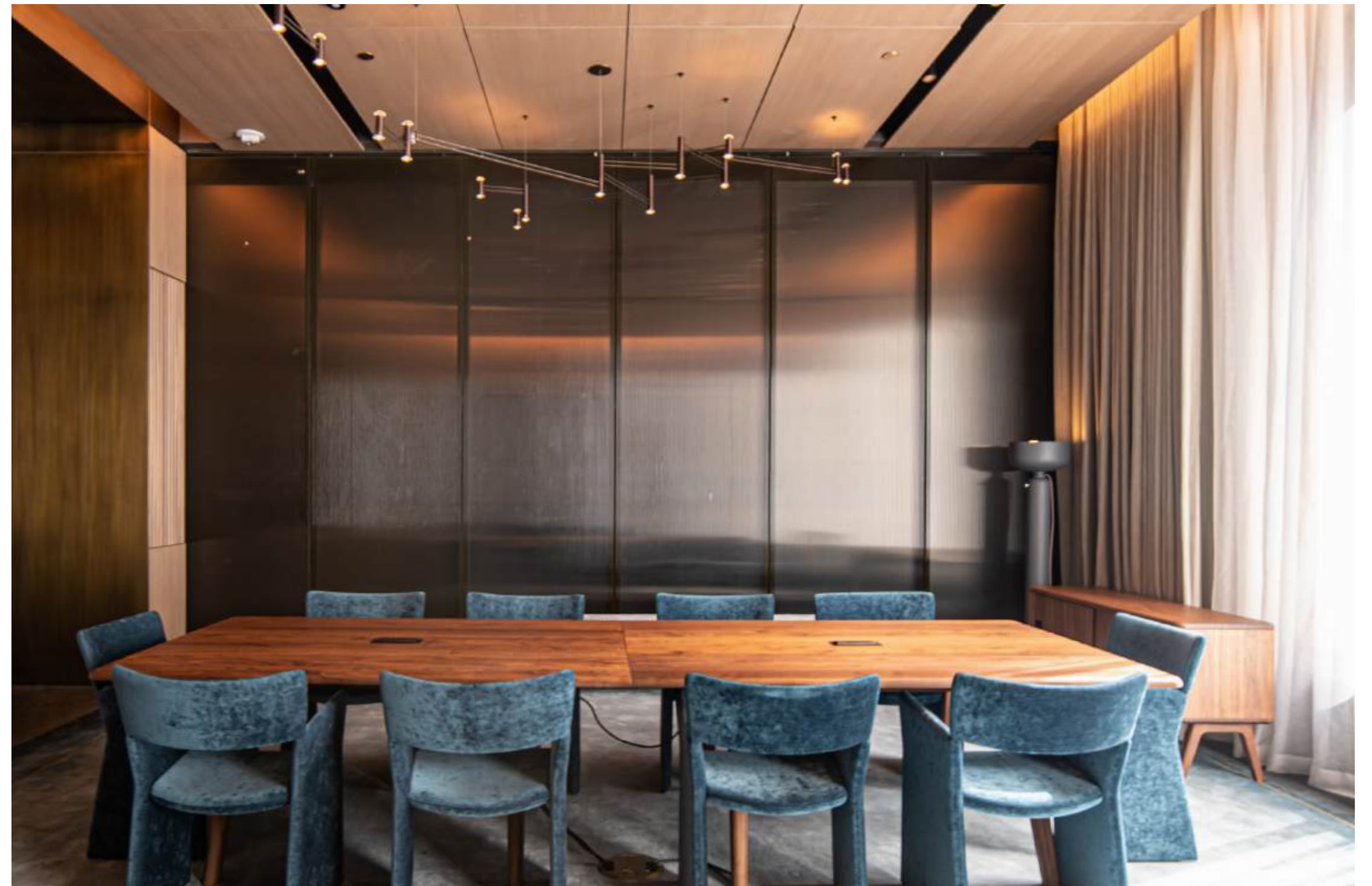




## Glass Stackwall

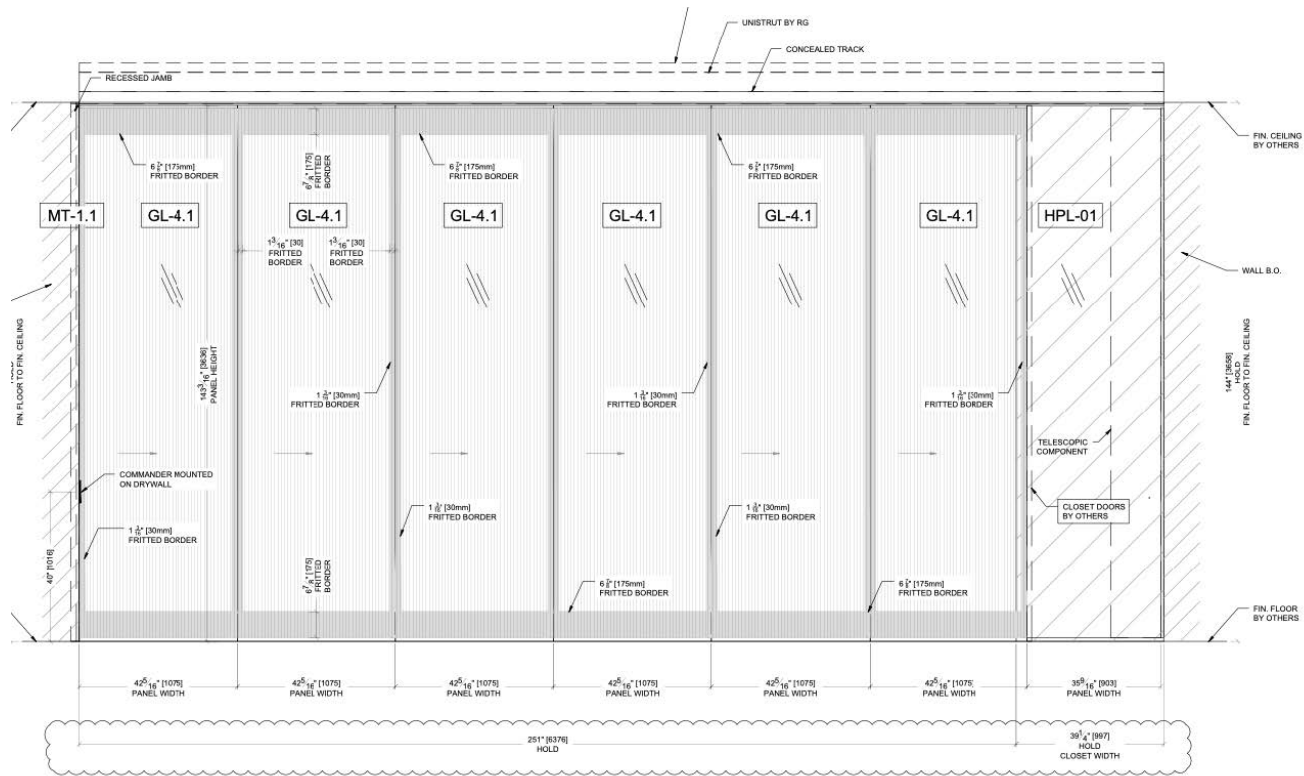
### Double Glazed with Fluted Glass

CARVART's glassSTACKWALL double-glazed room partition with fluted glass combines acoustic performance with a refined, textural aesthetic. Top-hung panels glide effortlessly along an upper track and stack compactly into a designated parking area, maintaining flexibility without compromising clarity or privacy. The fluted glass introduces rhythm and softness, diffusing light while enhancing spatial depth within a clean, minimal system.



# Glass Stackwall

## Double Glazed with Fluted Glass





## Partition Screens Glass & Metal Solutions

Custom metal-clad and mesh partition screens for 550 Madison Avenue designed as a fully prefabricated system by CARVART to ensure precision, consistency, and efficient installation. The layered mesh and metal cladding create depth, warmth, and controlled transparency, with refined detailing that elevates the overall architectural expression.



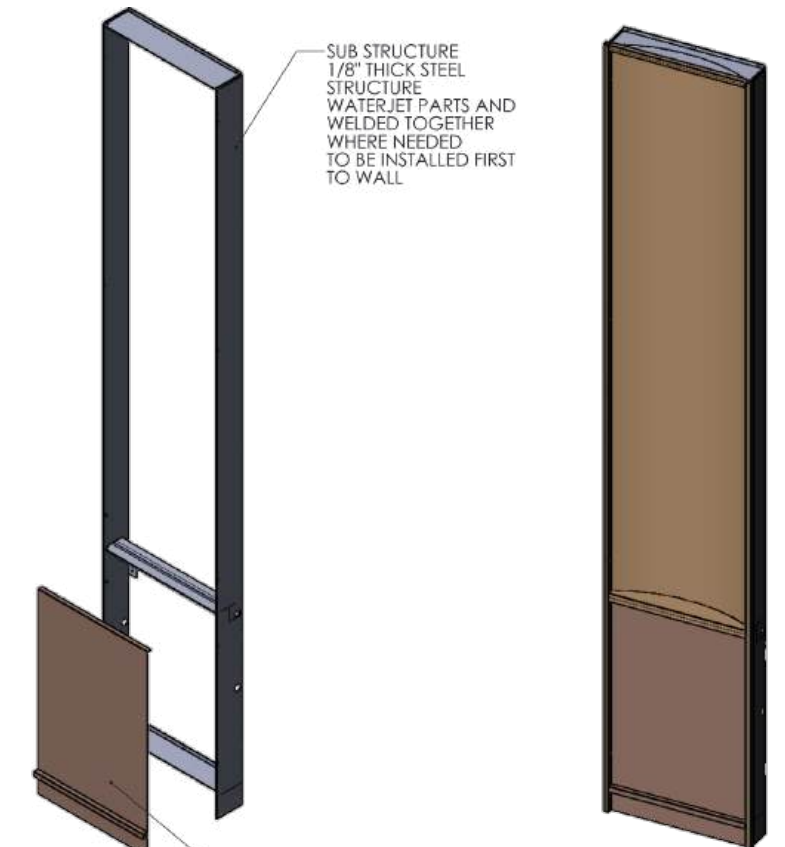


# Partition Screens Prefabricated & Installed

TYP. INTENDED TO SHOW THE INSTALLATION AND MAINTENANCE SEQUENCE

SCALLOPED PANEL ASSEMBLY SEE FABRICATION DRAWINGS FOR DETAILS. TO BE FULLY FINISHED INSIDE AND OUTSIDE (CRITICAL) TO BE INSTALLED 3-RD

BEAUTY CAP LEFT FULLY FINISHED TO BE INSTALLED 4



SUB STRUCTURE 1/8" THICK STEEL STRUCTURE WATERJET PARTS AND WELDED TOGETHER WHERE NEEDED TO BE INSTALLED FIRST TO WALL

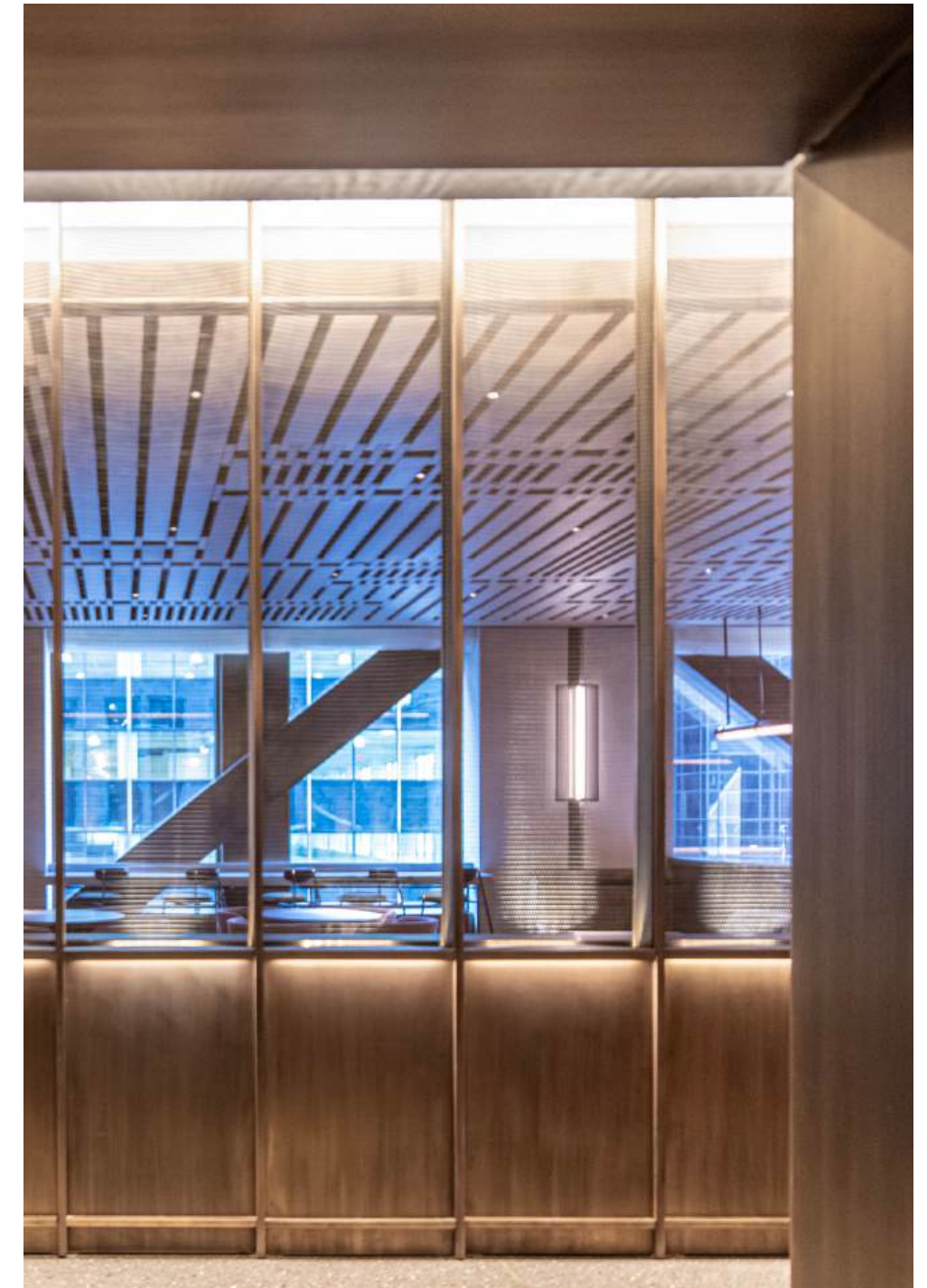
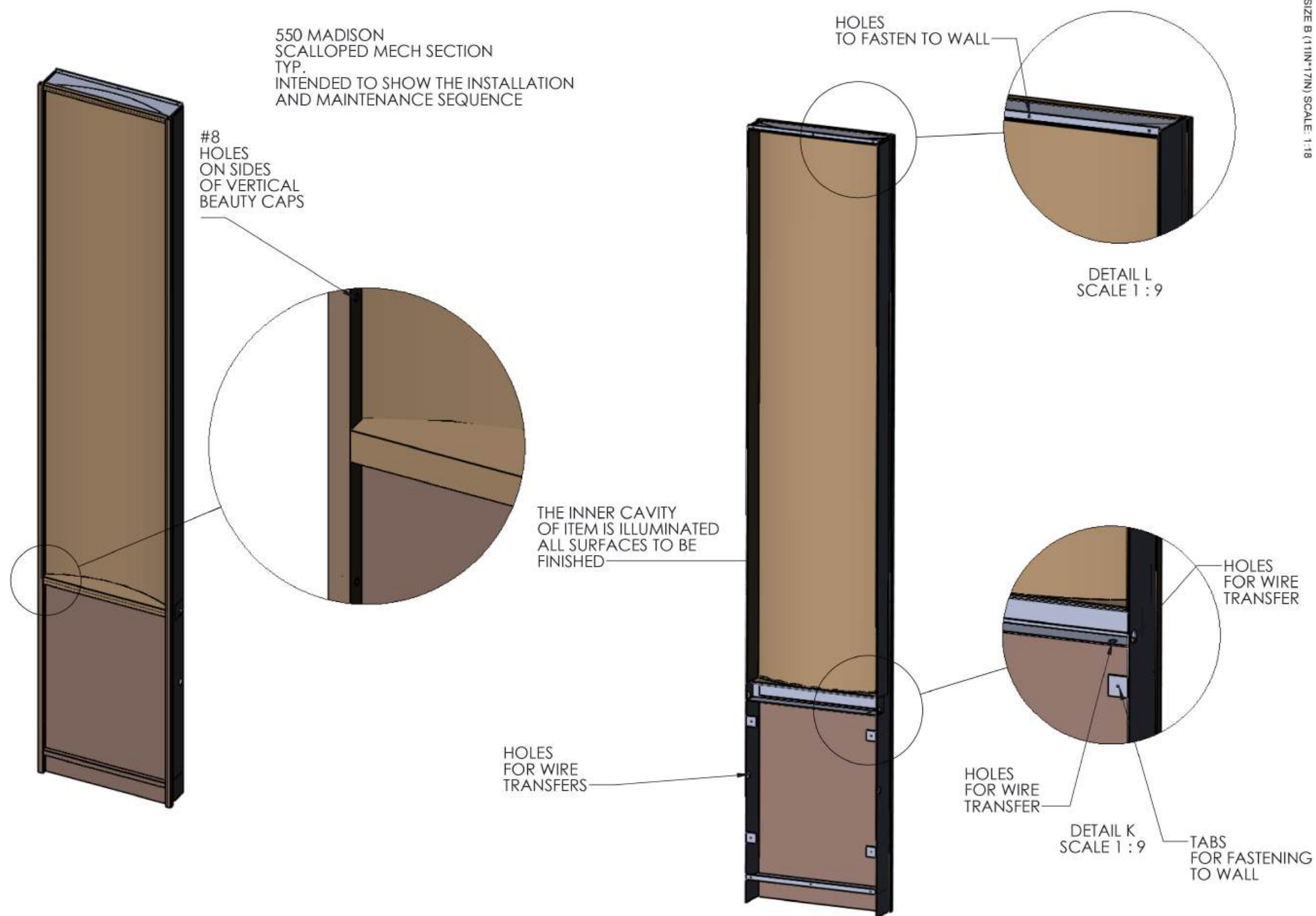
BOTTOM PANEL 1/8 THICK BRASS SHEETS FORMED AND PLUG WELDED TO HAVE FINISHED ANTIQUE BRAS: TO BE INSTALLED 2-ND

BEAUTY CAP RIGHT FULLY FINISHED TO BE INSTALLED 5



# Engineering & Development

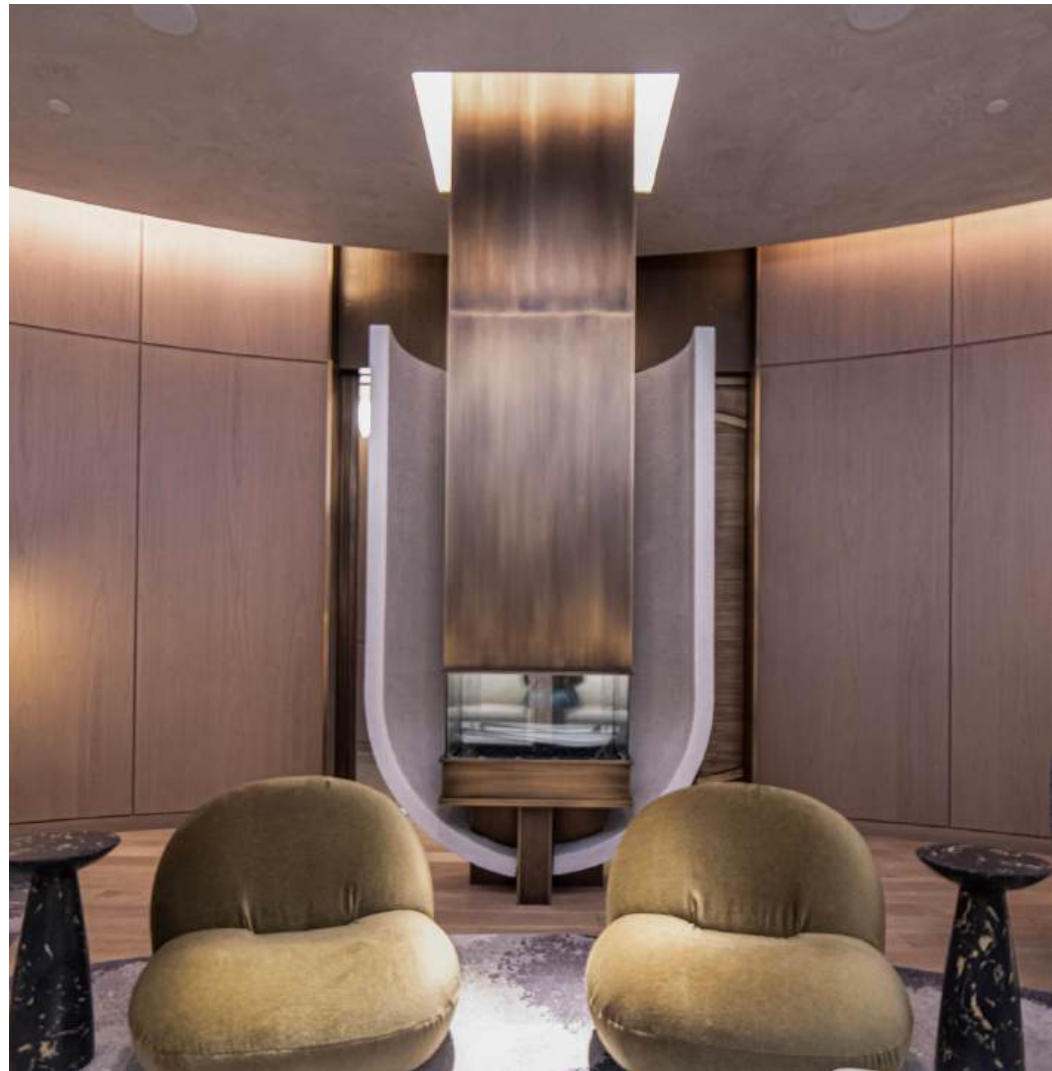
## Partition Screens



# Portals & Cladding

## Custom Metal Finishing

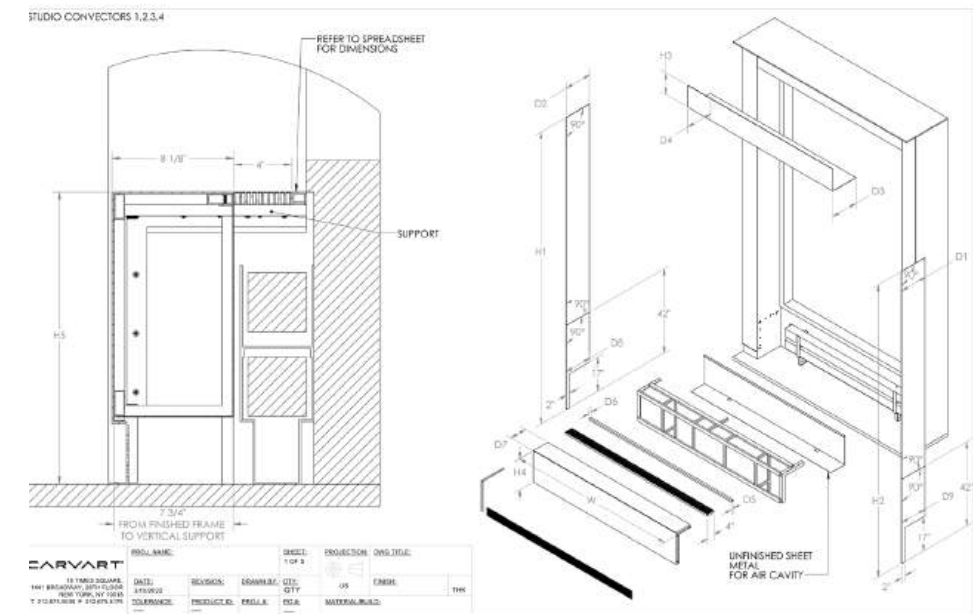
A defining scope for the building's interior character was shaped by CARVART's custom hand-finished patina panels, delivering a precise, contemporary execution. Utilizing a combination of mounting strategies—including Z-clips and pre-welded tabs—the system was engineered for a clean, seamless appearance, allowing panels to align with tight tolerances while concealing attachment points and maintaining a refined, uninterrupted surface.





## Portals & Cladding

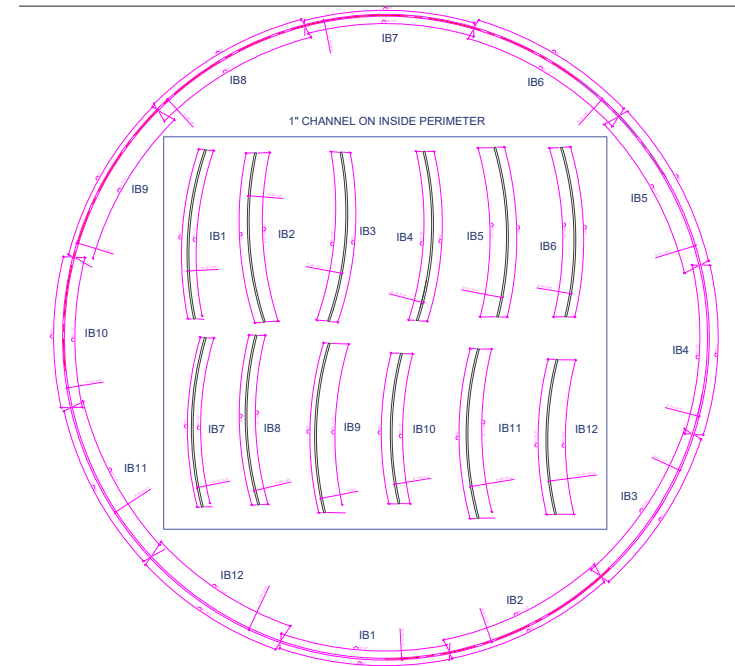
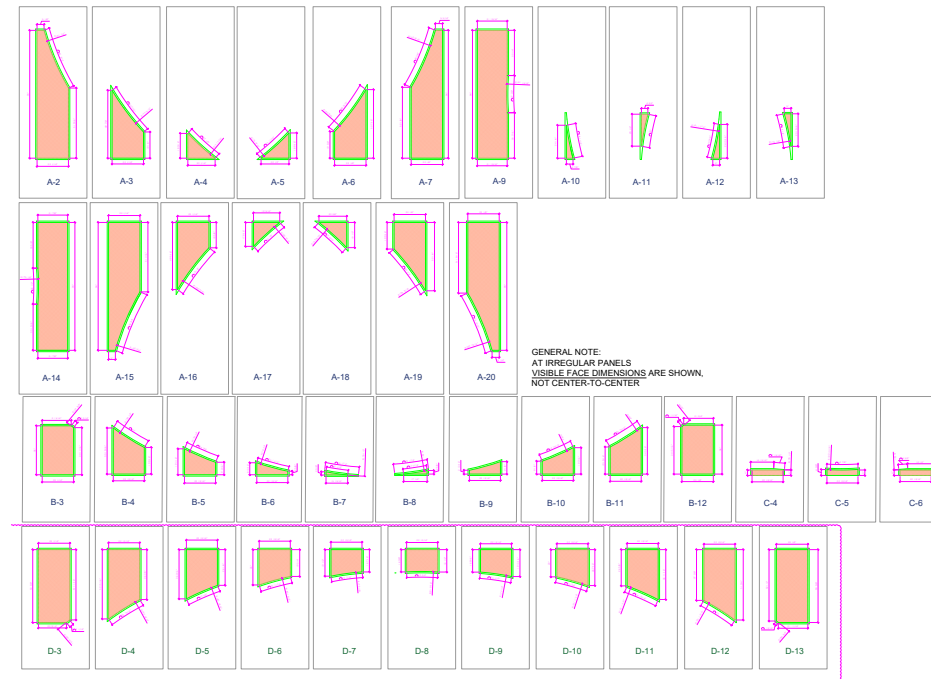
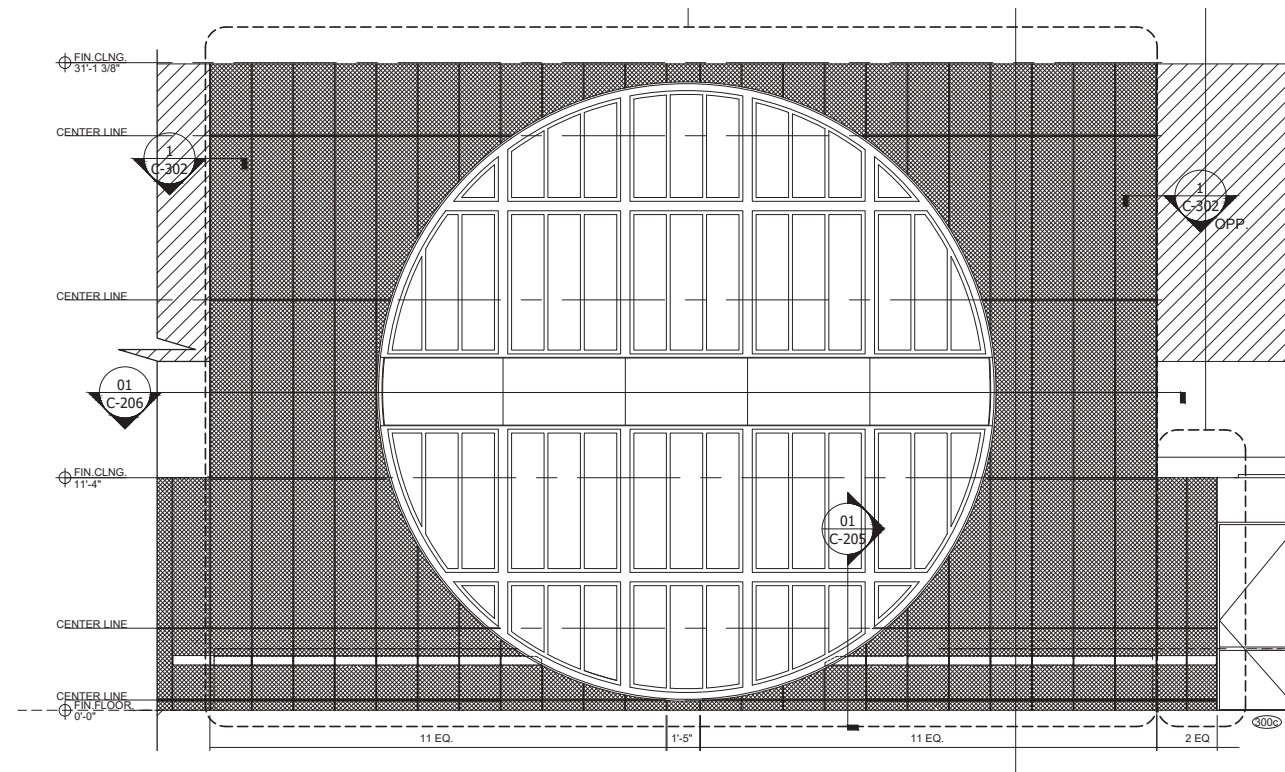
### Custom Metal Finishing



# Portals & Cladding

## Occulous

CARVART's scope centered on precise engineering and the execution of highly coordinated systems. Complex geometries—like the oculus and surrounding cladding—were resolved through detailed modeling and exacting fabrication, with each component precision-cut to ensure seamless alignment in the field. This upfront rigor enabled an efficient installation process, where prefabricated elements fit with minimal adjustment, delivering a clean, continuous finish true to the design intent.

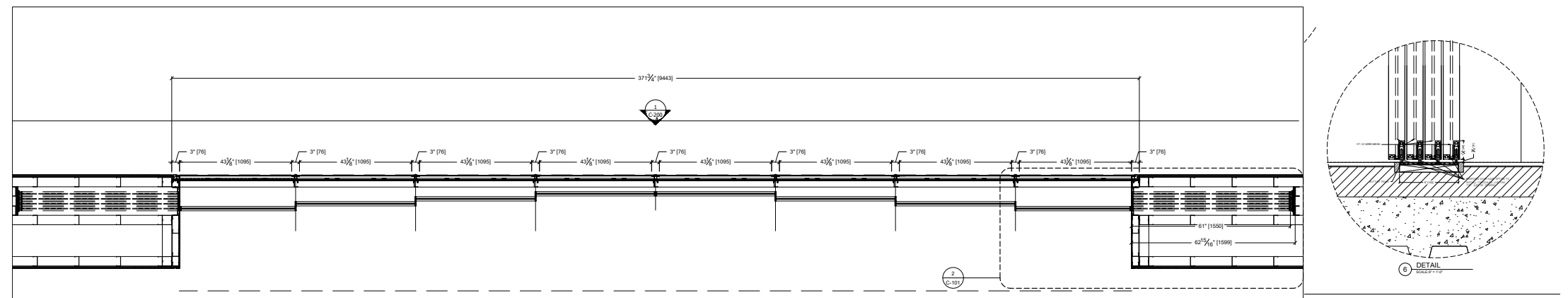


# Telescopic Doors Bi-Parting

For 550 Madison Avenue, a landmark architectural icon CARVART created a custom bi-parting telescopic door system, featuring precision metal framing and layered mesh infill that balances openness and privacy. The compact telescoping action maximizes clear openings, while refined detailing and flawless finishes deliver a true masterclass in craftsmanship.

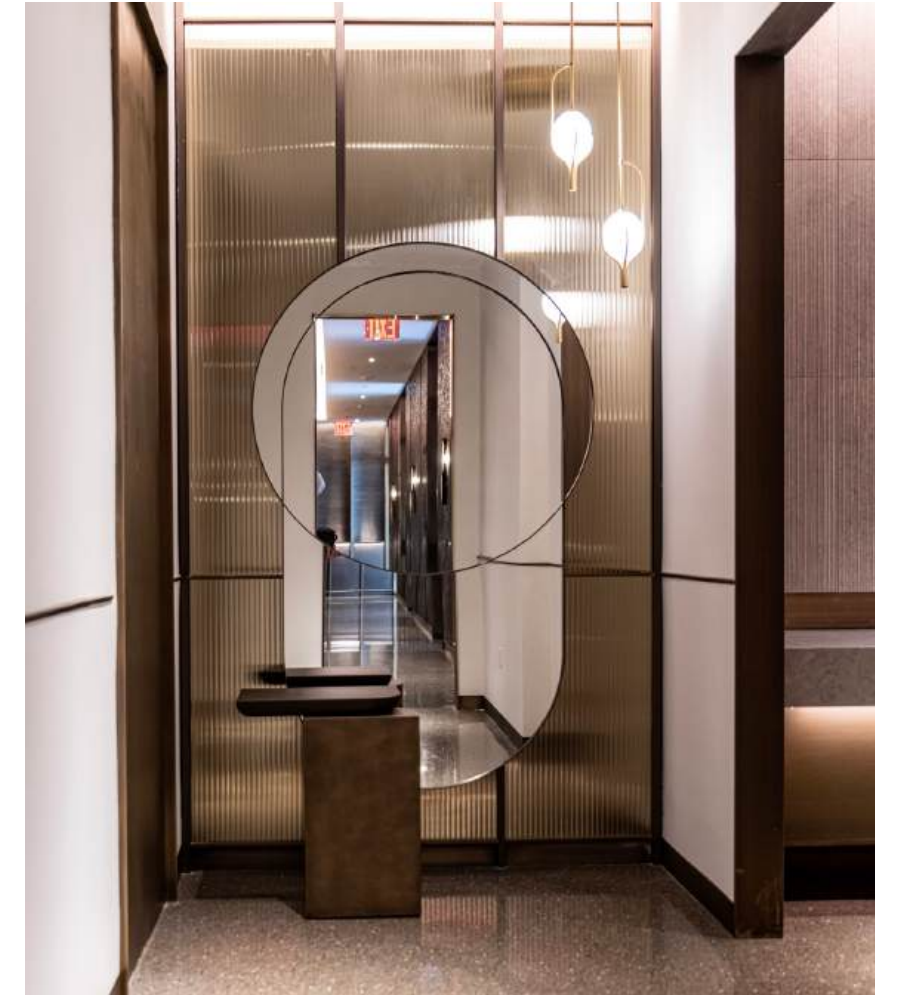
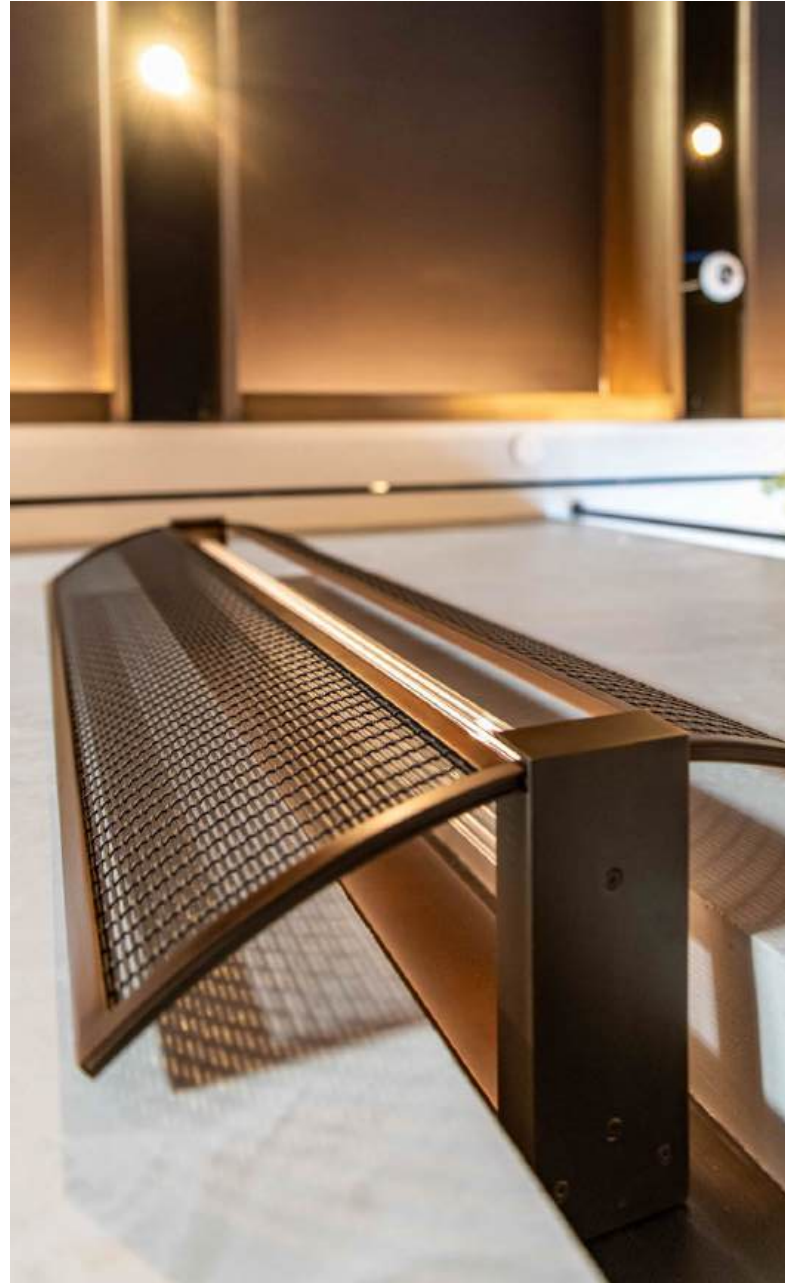


## Strategic Development



# Other Elements

## Light Covers, Mirrors & More





CARVART®