



HOSPITALITY & PREMIER RESIDENCES

## ABOUT US



### HERITAGE AND TRADITION BLENDED WITH CREATIVITY AND INNOVATION.

#### This is CARVART.

Under the strategic leadership of our visionary CEO, Edward Geyman, CARVART has evolved from a modest family-owned business, established over two decades ago in a quaint Brooklyn factory, to a prominent leader in the architectural product and engineering sector. Today, we serve a distinguished clientele not only in New York City but across the United States and globally.

Despite our growth, one element remains constant — the Geyman touch — a steadfast dedication to merging artisanal skill with innovative solutions, ensuring each project resonates with personal creativity and expert execution.

#### CREATE WITH CARVART

##### US + GLOBAL

Our Industry Outreach is not just about expanding our geographical footprint; it's about fostering relationships, driving innovation, and delivering exceptional value to our clients, wherever they may be.

##### NEW YORK

Headquarters at Times Square





## HOSPITALITY CASE STUDIES INDEX



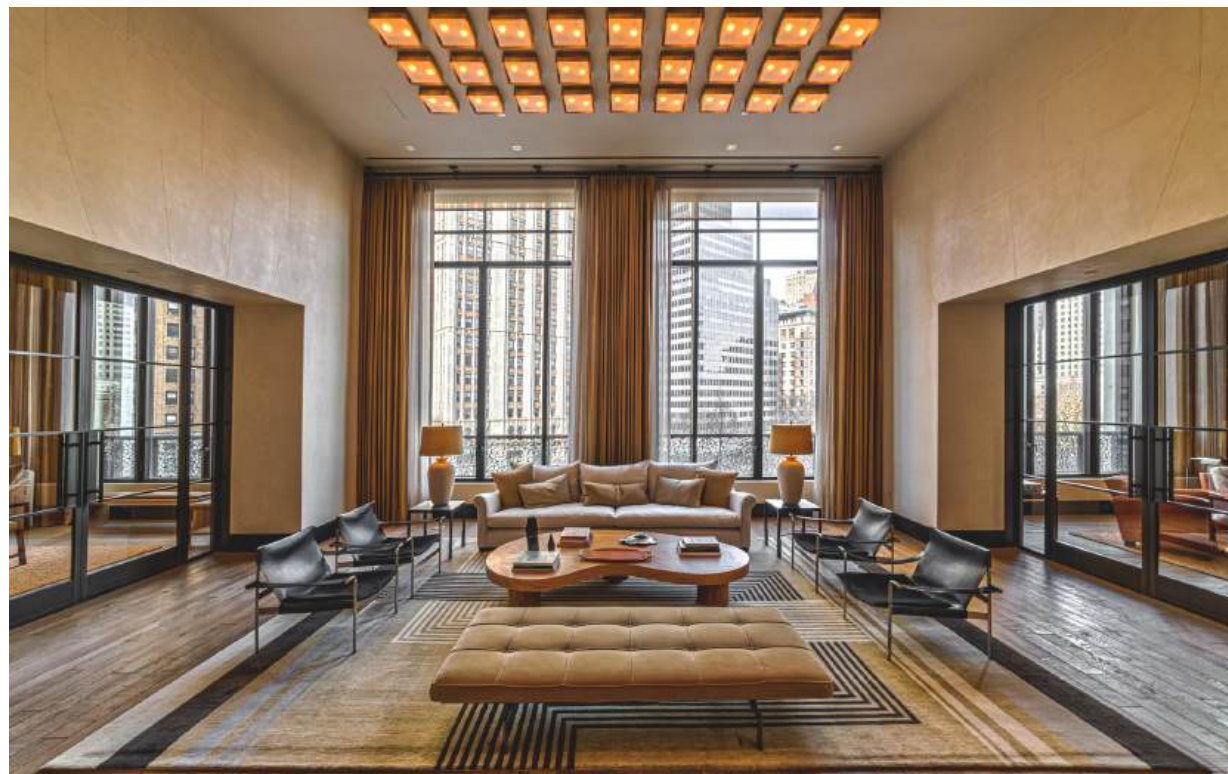
**Hard Rock Hotel**  
Design/Engineering/Modular Construction

**Four Seasons Hotel**  
Design/Installation/Materials/Drawing

**25 Park Row**  
Design/Engineering/Residences\*

**Equinox Hotel**  
Design/Installation/Materials/Drawing

**BACCARAT HOTEL & RESIDENCES**  
Design/Engineering/Residences\*



**550 Madison**  
Design/Installation/Materials/Drawing

**Mandarin Oriental**  
Materials/Drawing/Design/Installation



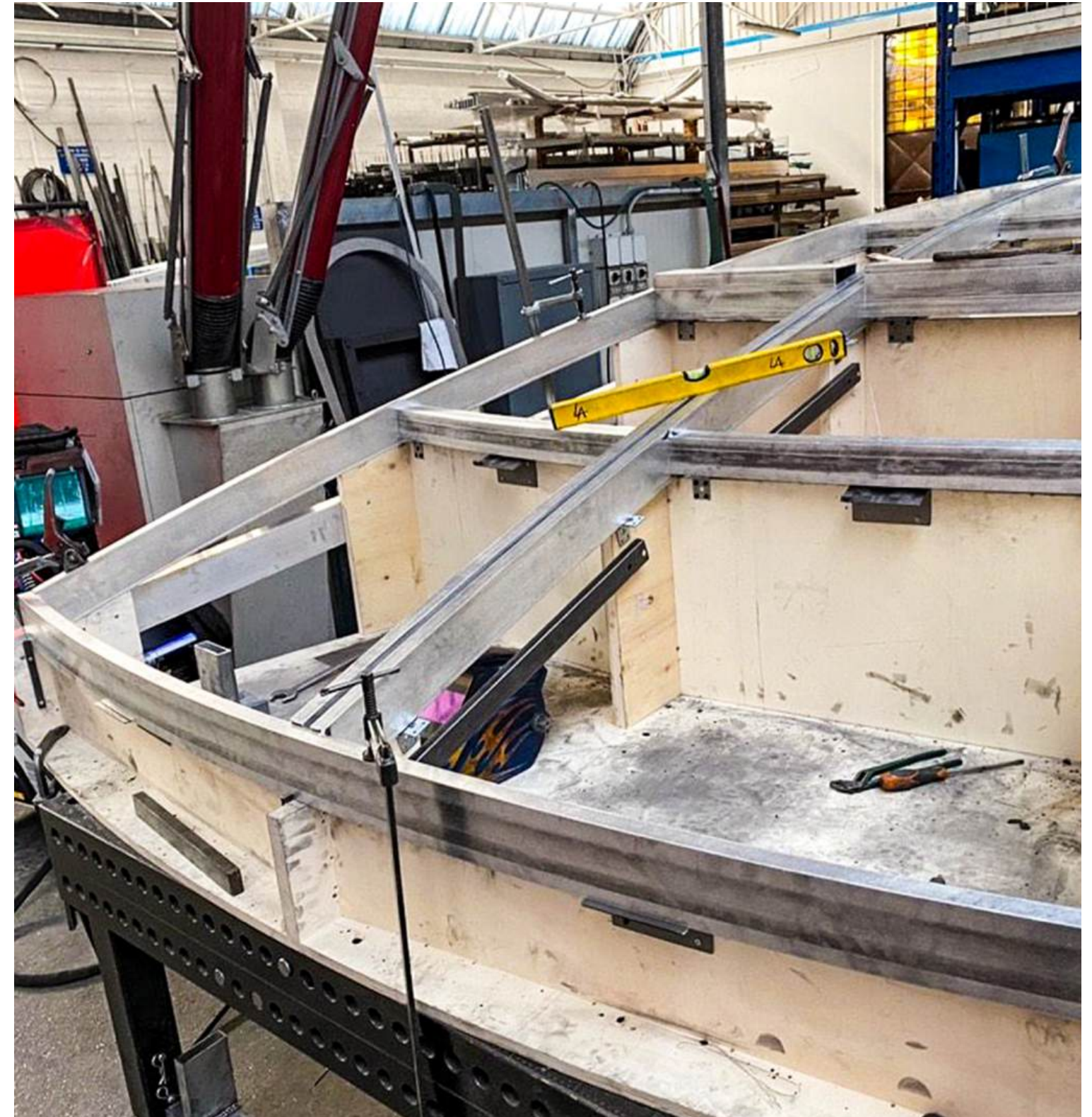
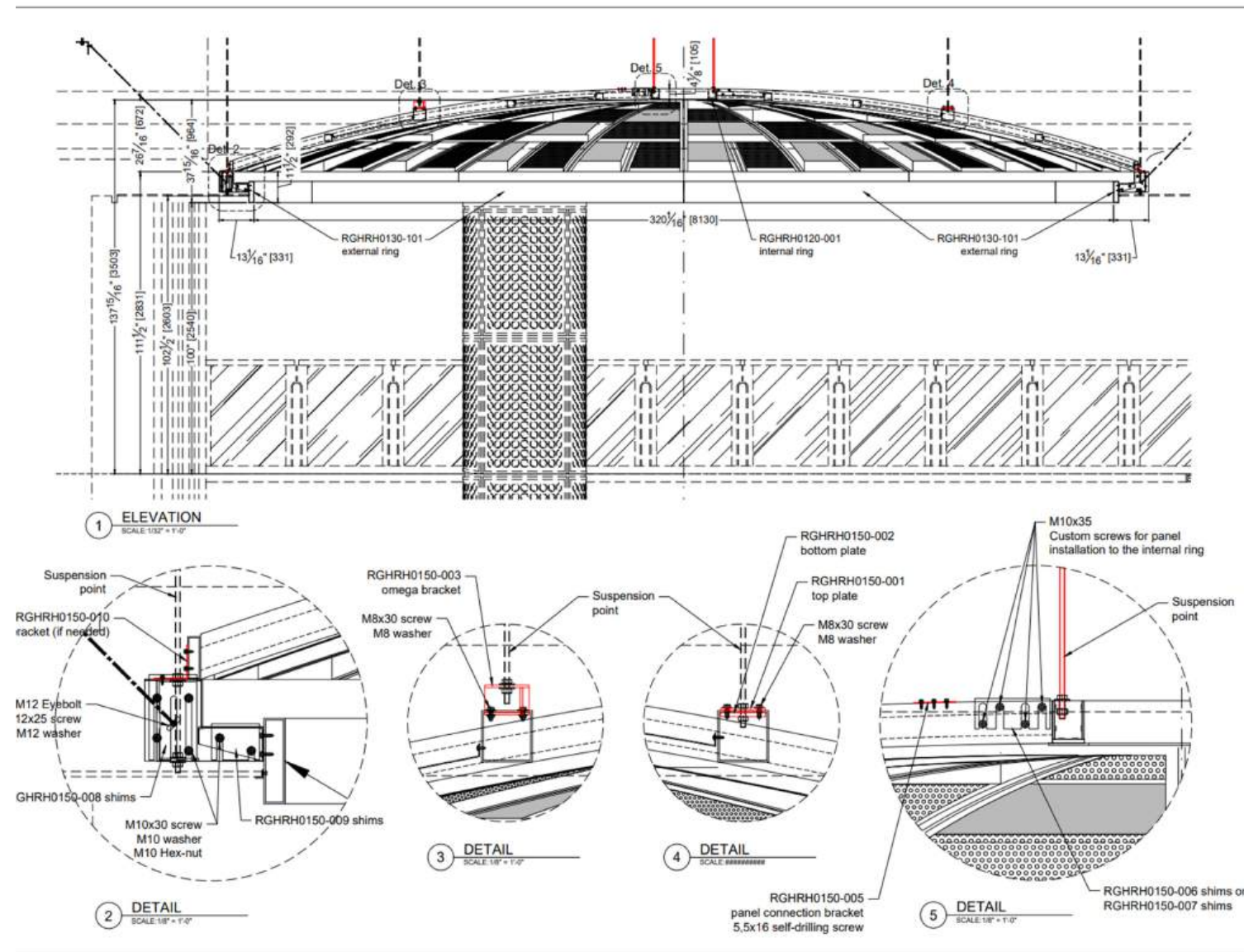


HARD ROCK HOTEL





## HARD ROCK HOTEL: Identifying Challenges



**Dome Design Challenge:** Architecturally sound, stunning, and sustainable.

**Cost-Effective Construction:** Sought affordable solutions for dome construction.

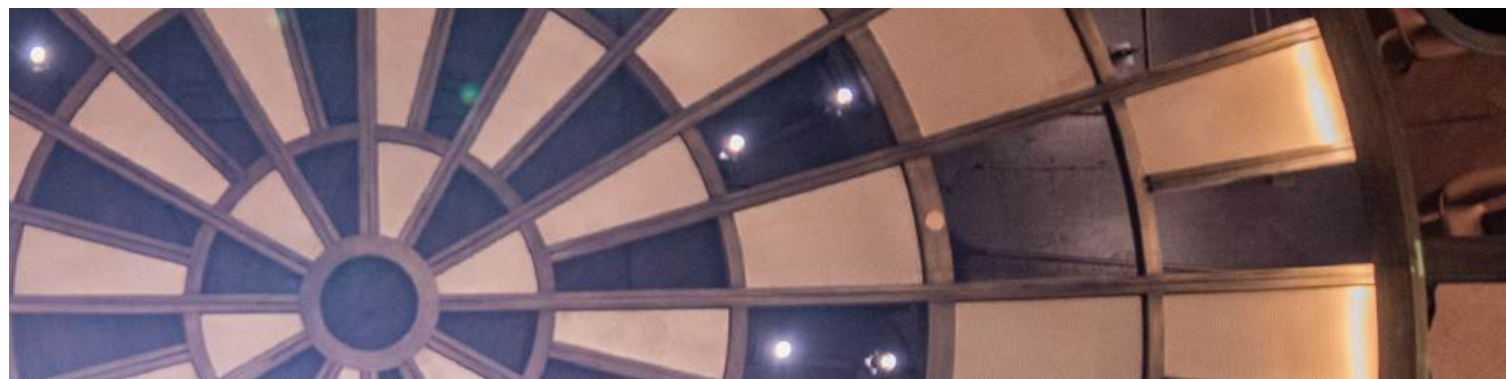
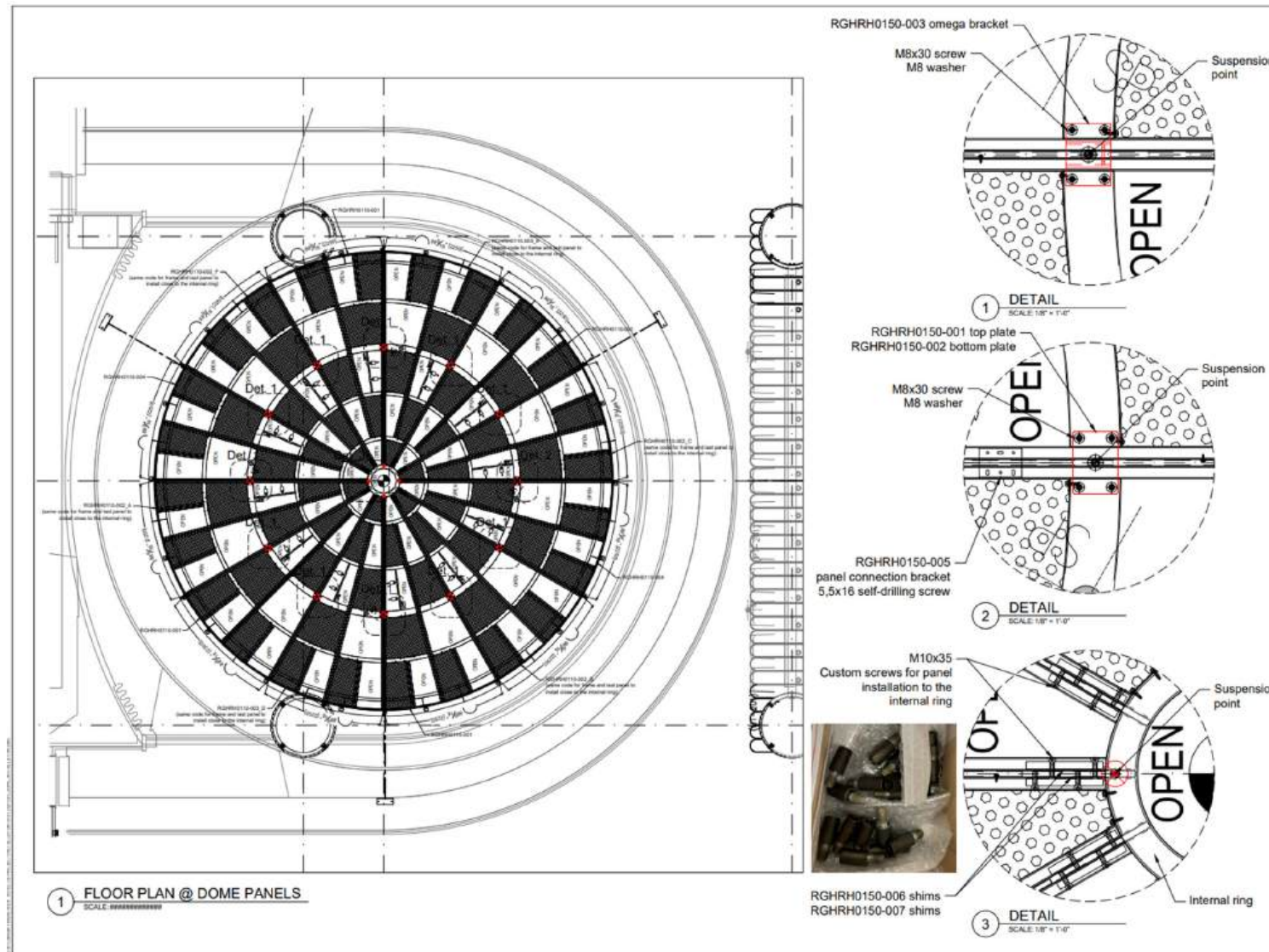
**Material Specifications:** Initial design specified brass or bronze.

**Material Limitations:** Brass/Bronze proved too heavy and expensive.

**Structural Concerns:** Challenges with elevated placement, 30-40 feet high.



# HARD ROCK HOTEL: Strategic Solution Development



- Creative Reimagining:** Used alternative materials.
- Use of Aluminum:** Aluminum with metal plating proposed.
- Cost-Effectiveness:** Brass/bronze look, lower cost.
- Reduced Weight:** Lighter structure with alternatives.
- Longevity and Maintenance:** Ensured durability, easier upkeep.
- Aesthetic Consideration:** Metal plating mimics oxidized look.



## HARD ROCK HOTEL: Implementation and Deployment

**Engineering Precision:** Utilized CAD to design, troubleshoot onsite challenges.

**Custom Cable Solution:** Plated stainless steel cables for design needs.

**Engineered Support Slabs:** Precisely tensioned to anchor dome securely.

**Efficient Prefabrication in Italy:** Dome segmented like pizza slices for easy transport.

**Modular Design Philosophy:** Ensured seamless installation and structural integrity.



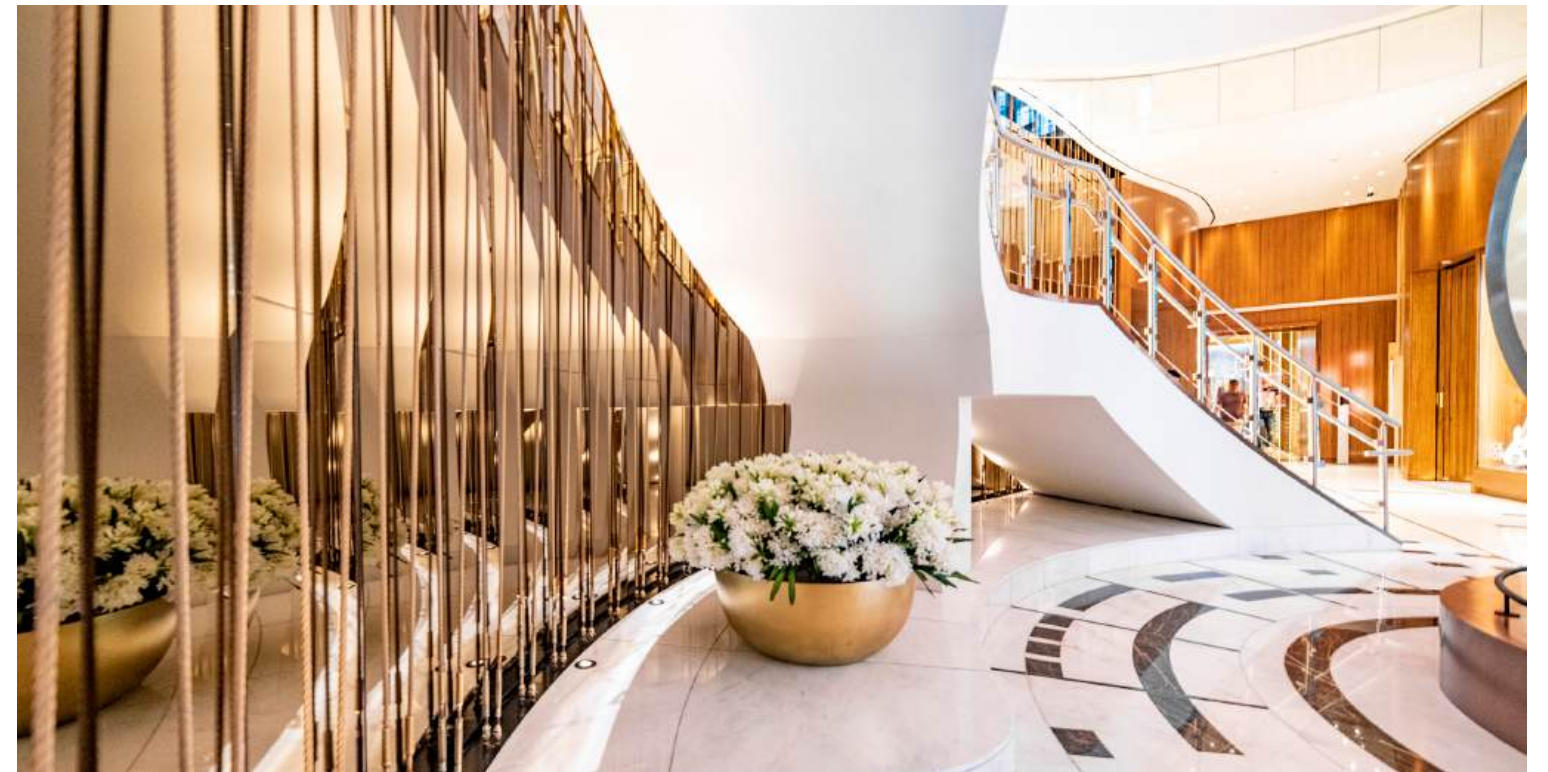
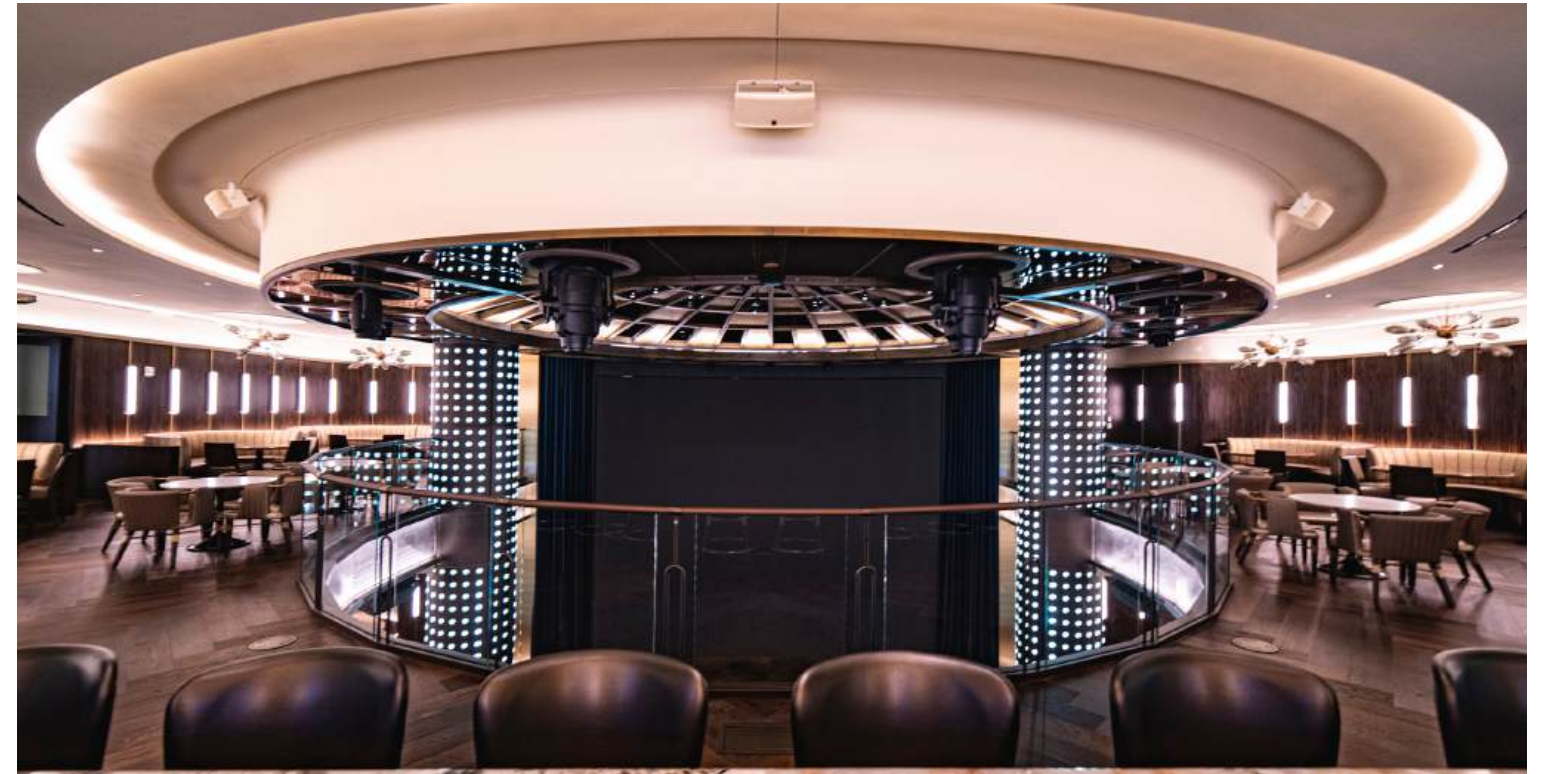


HARD ROCK HOTEL



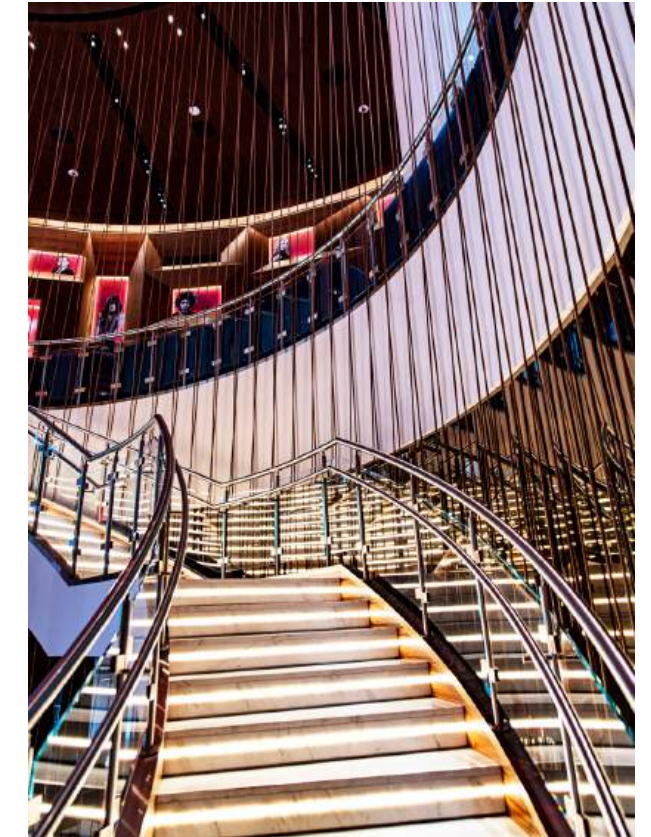


## HARD ROCK HOTEL: Gallery





## HARD ROCK HOTEL: Notable Achievements And Innovations



**Aesthetic Integration:** Cables plated to mimic brass, enhancing visual appeal.

**Innovative Material Use:** Stainless steel chosen for durability, cost-effectiveness.

**Custom Engineering:** Cables engineered to meet specific aesthetic requirements.

**Key Achievement:** Overcame size and material limitations creatively.



## HARD ROCK HOTEL: Solutions

### ARCHITECTURAL SYSTEMS



**Prefabricated Dome System:** constructed from aluminum with a metal plating finish, providing a lightweight yet visually impactful structure.



**Innovative Mirror Panel System:** Oversized curved mirrors engineered to be seamlessly integrated with invisible attachments.



**Lightweight Structural Support System:** Engineered lightweight supports for dome installations at significant heights.

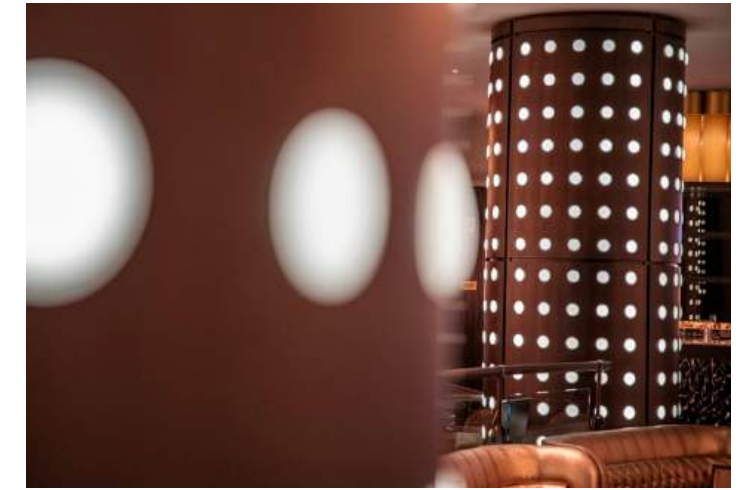


**Custom Cable Wall System:** Pre-engineered steel cables, plated and installed for stability and aesthetic appeal.

### MATERIALS



**MESH PANELS**

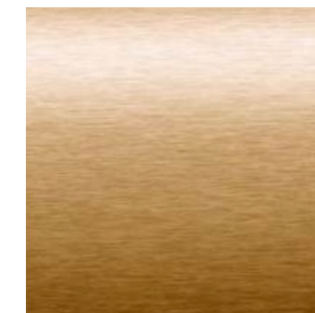


**PERFORATED BRASS PANELS**

### MATERIAL FINISHES



**Aluminum**



**Brass**



**Bronze**



**Stainless Steel**

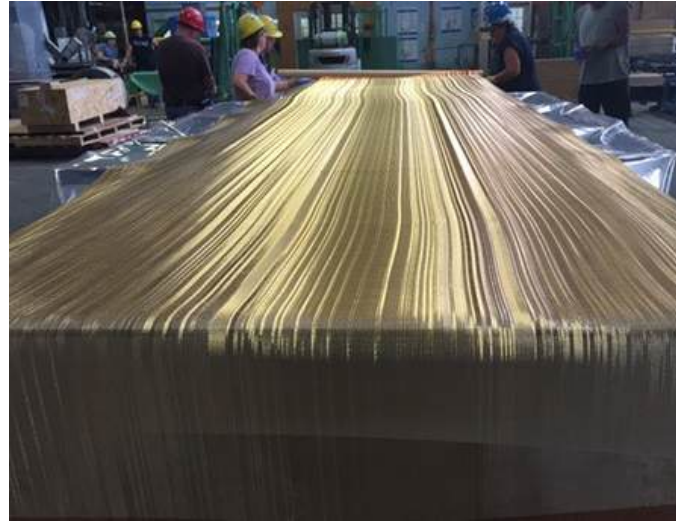


**FOUR SEASONS HOTEL**





## FOUR SEASONS HOTEL: Identifying Challenges



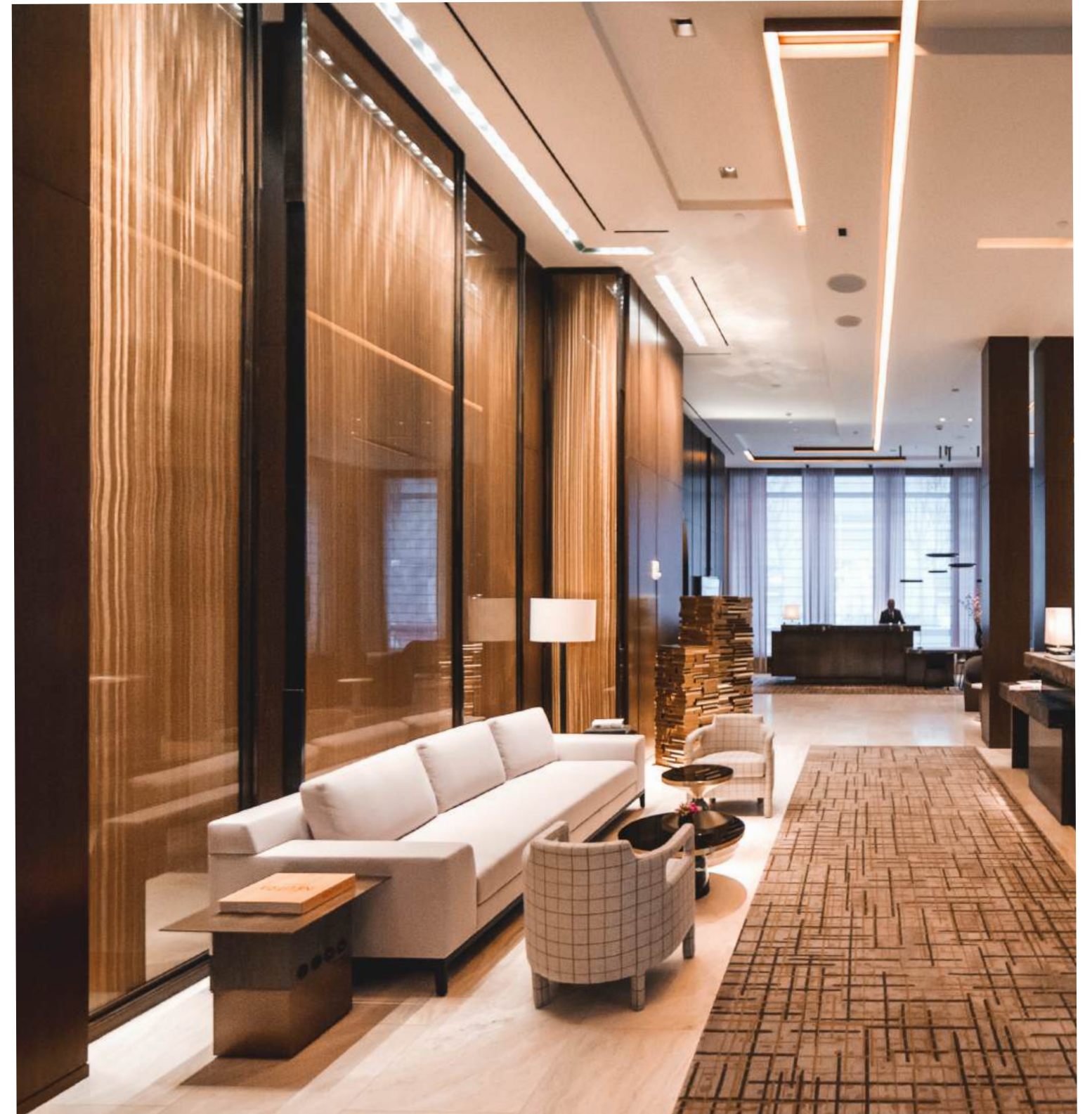
**Large Panel Installation:** Challenges in handling oversized glass panels.

**Aesthetic Integration:** Ensure compatibility with existing decor.

**Material Durability:** Select materials for high lobby traffic.

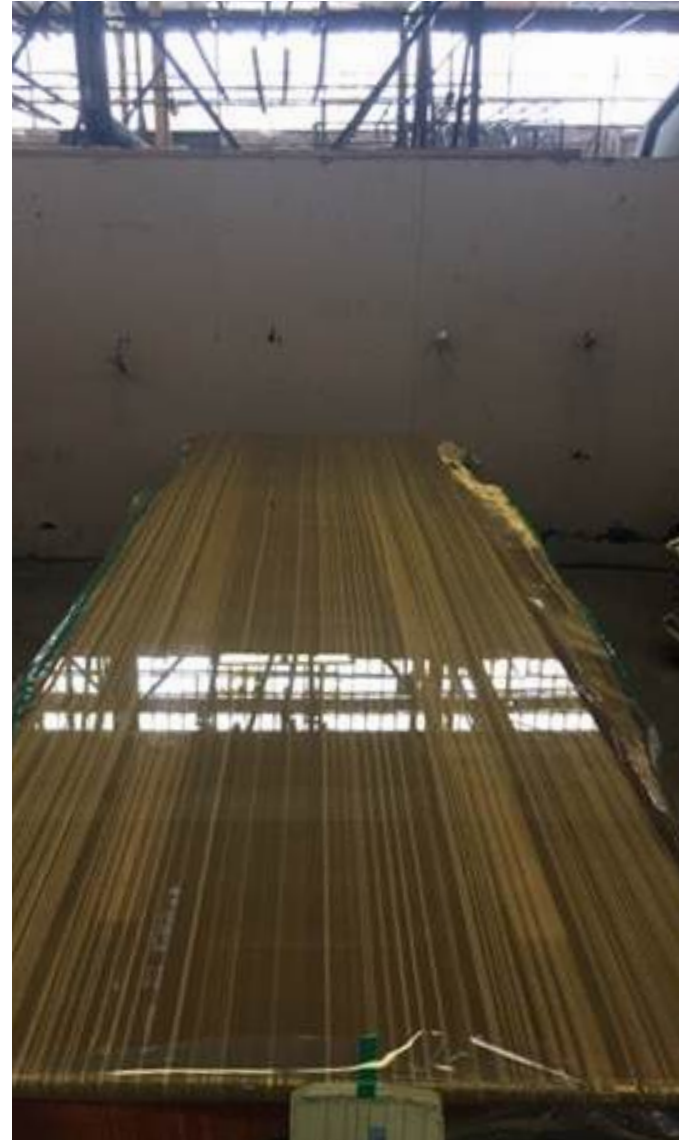
**Design Cohesion:** Maintain Four Seasons' iconic style.

**Technical Specifications:** Adhere to precise glass and metallic specs.





## FOUR SEASONS HOTEL: Strategic Solution Development



- Custom Design Solutions:** Tailored glassMETALLIC panels for specific dimensions.
- Material Selection:** High-end, durable materials enhance luxury.
- Collaborative Design Process:** Partnered with architects for design fidelity.
- Advanced Fabrication Techniques:** State-of-the-art technology for glass precision.
- Aesthetic Focus:** Sophisticated metallic finishes elevate ambiance.



## FOUR SEASONS HOTEL: Implementation and Deployment

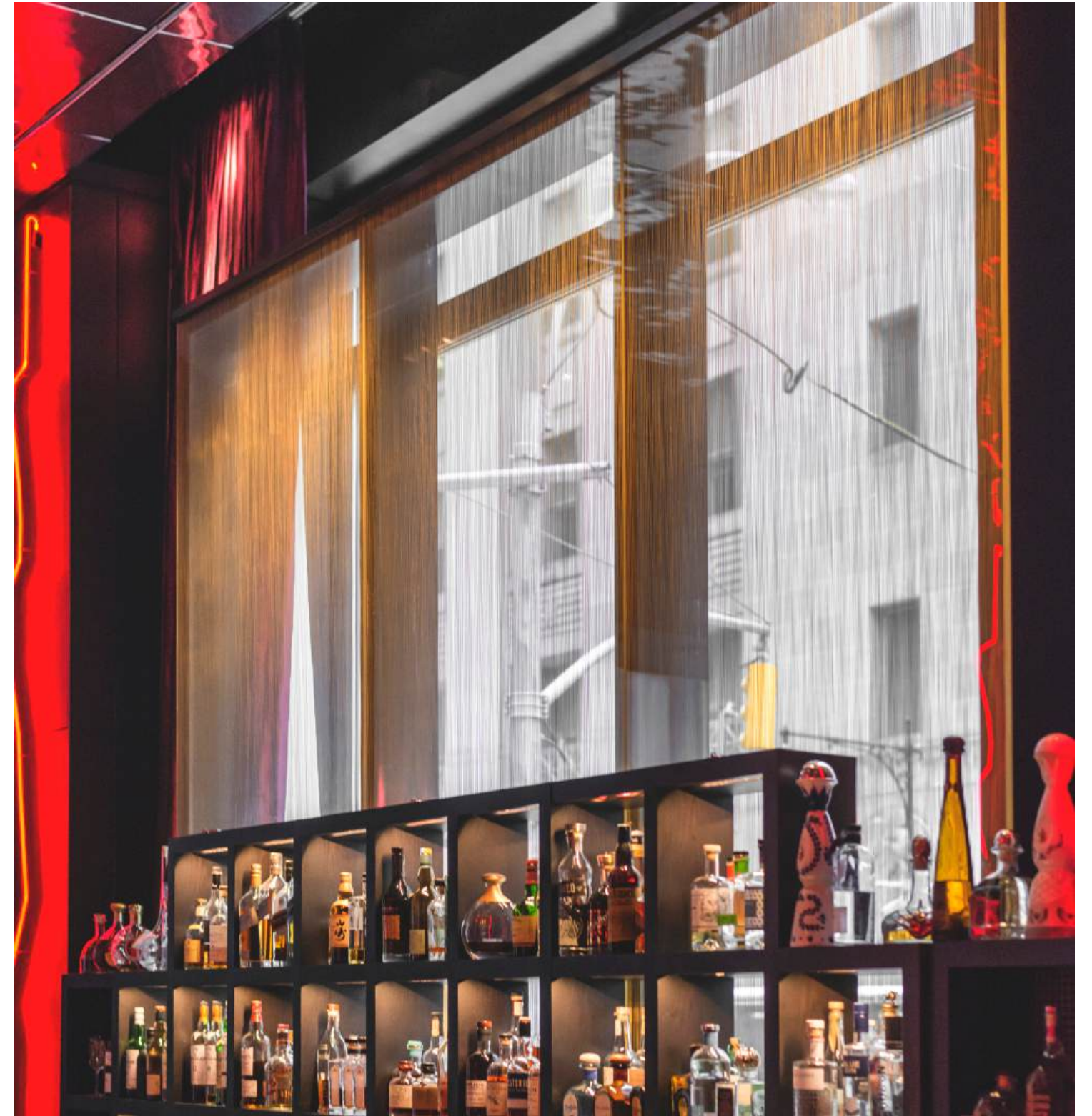
**Precision Installation:** Skilled technicians install large panels.

**Quality Assurance:** Rigorous checks ensure durability, finish standards.

**Collaborative Execution:** Seamless coordination with hotel management, construction teams.

**On-Site Adjustments:** Modifications during installation for perfect alignment.

**Final Aesthetics Integration:** Match installation with Four Seasons luxury standards.





FOUR SEASONS HOTEL





**FOUR SEASONS HOTEL: Gallery**





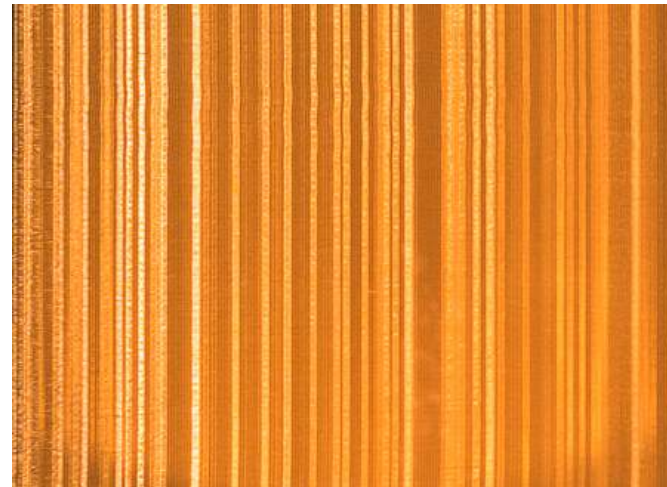
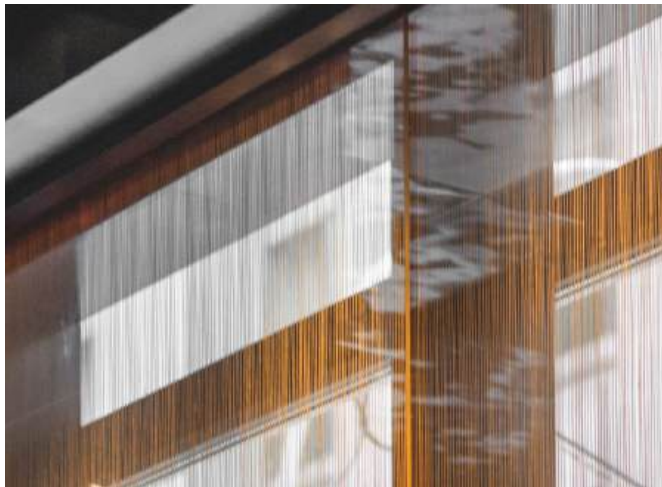
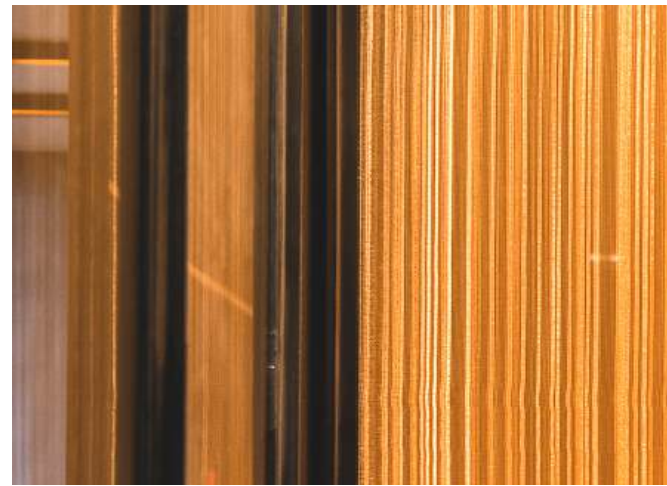
**FOUR SEASONS HOTEL: Gallery**





## FOUR SEASONS HOTEL: Solutions

### ARCHITECTURAL SYSTEMS



**Custom Design Solutions:** Tailored glassMETALLIC panels for specific dimensions.

### MATERIALS



**glassMETALLIC panels**

### MATERIAL FINISHES



**Bronze**

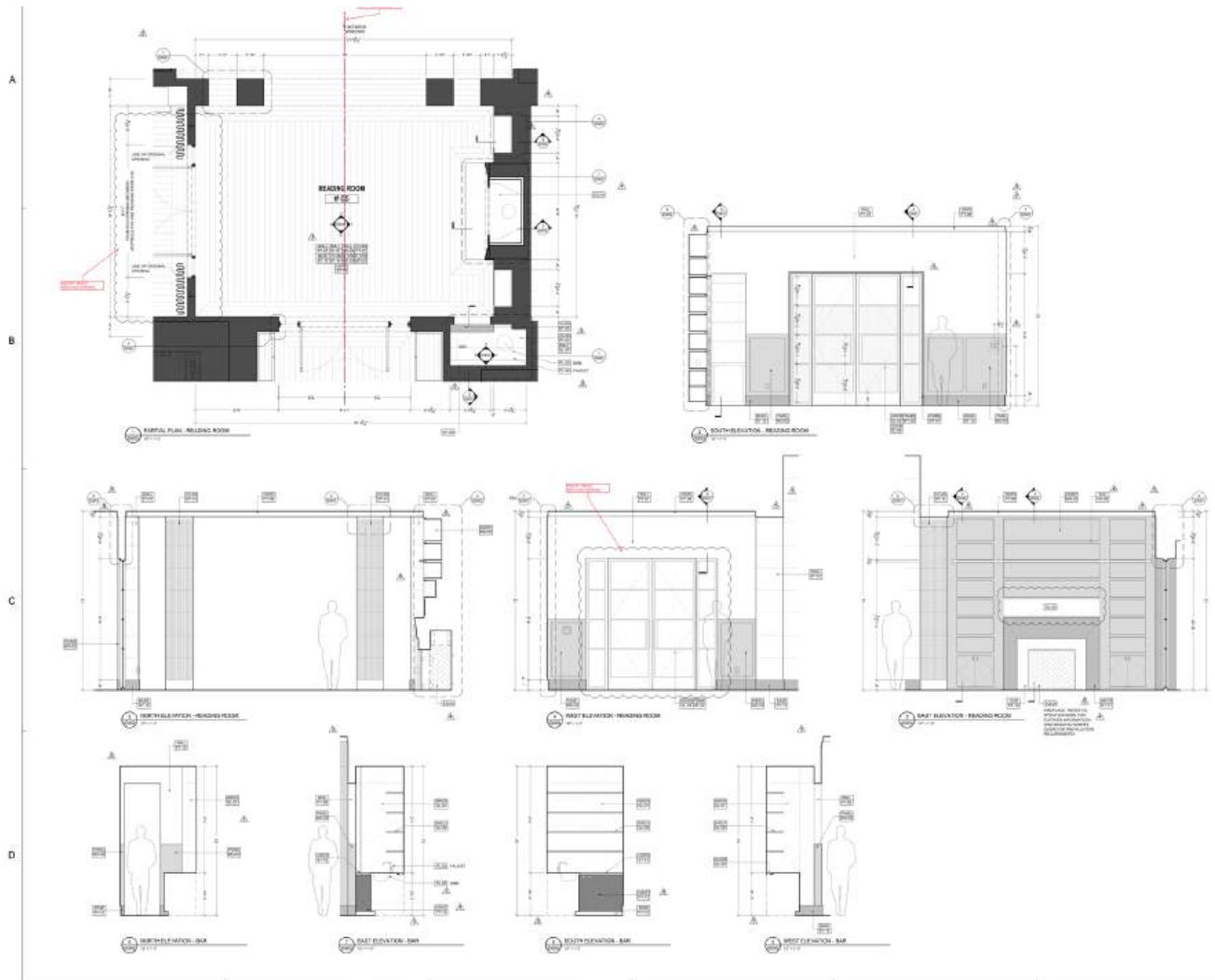


25 PARK ROW





## 25 PARK ROW: Identifying Challenges



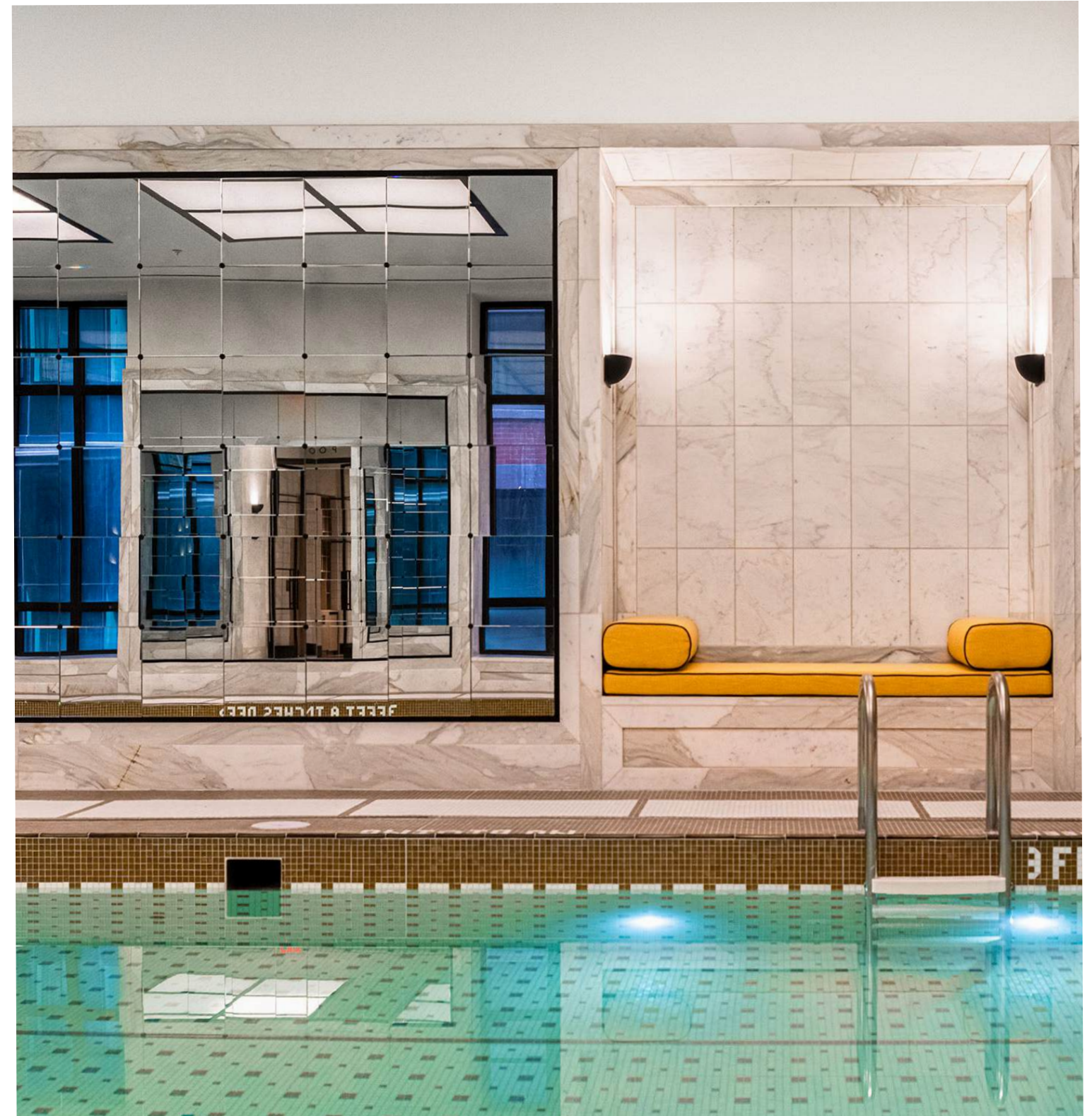
**Elevated Aesthetic Expectations:** High-end design essential for luxury spaces.

**Durable Material Requirements:** Materials must endure frequent use in communal areas.

**Integrated Functional Design:** Seamless style and utility blend needed for pool, gym.

**Architectural Cohesion:** Consistent luxury aesthetic required across communal spaces.

**Installation Precision:** Exact alignment crucial for lighting and door installations.









## 25 PARK ROW: Implementation and Deployment

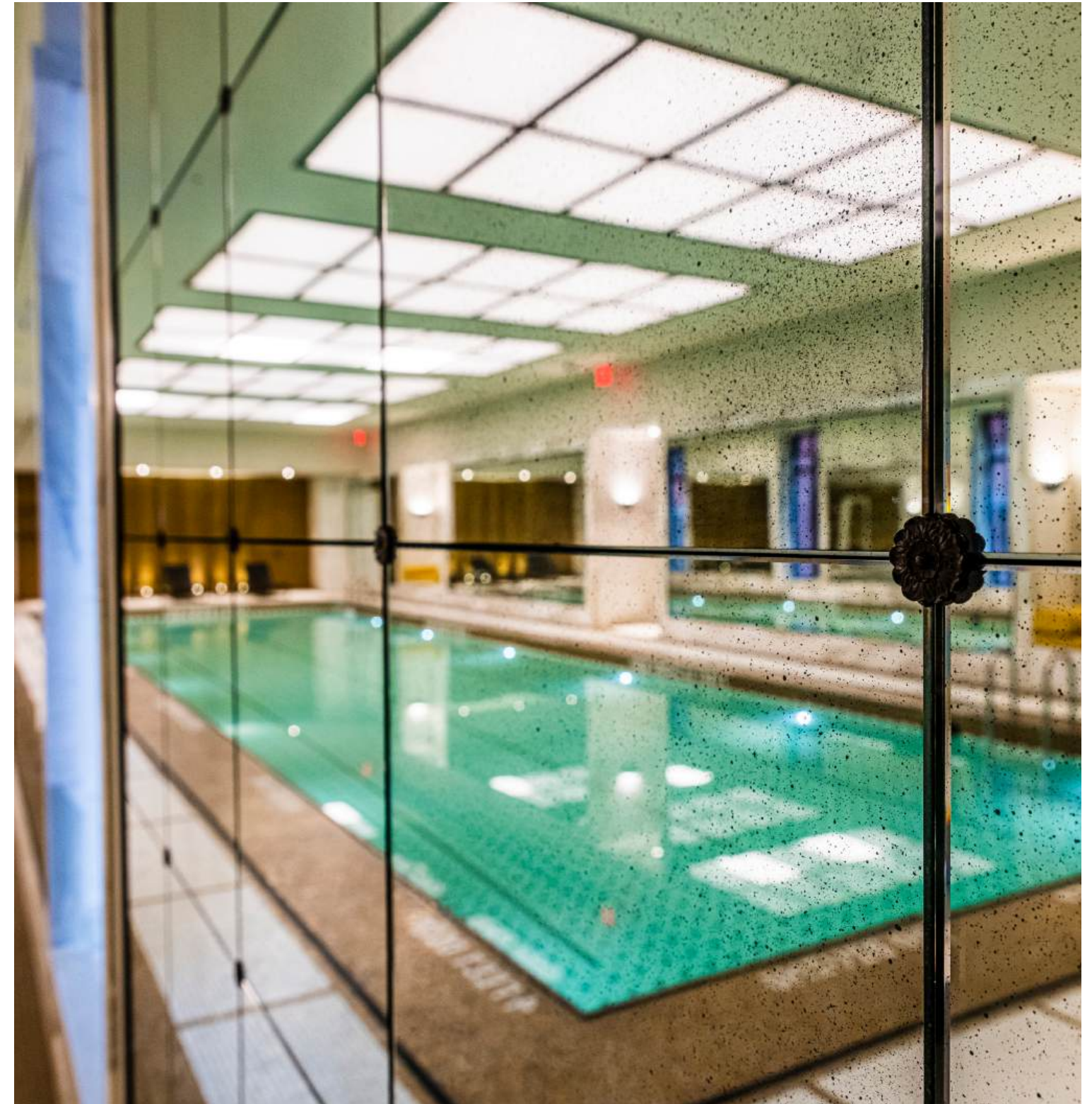
**Precise Installation Execution:** Carefully installed doors, light boxes in pool, gym areas.

**Quality Assurance:** Rigorous testing conducted on materials in high-traffic areas.

**Coordinated Installation Schedule:** Timelines managed to minimize disruption to residents.

**Detail-Oriented Finishings:** Focus on fine details to elevate luxury communal spaces.

**Post-Installation Review:** High standards confirmed through thorough assessments.



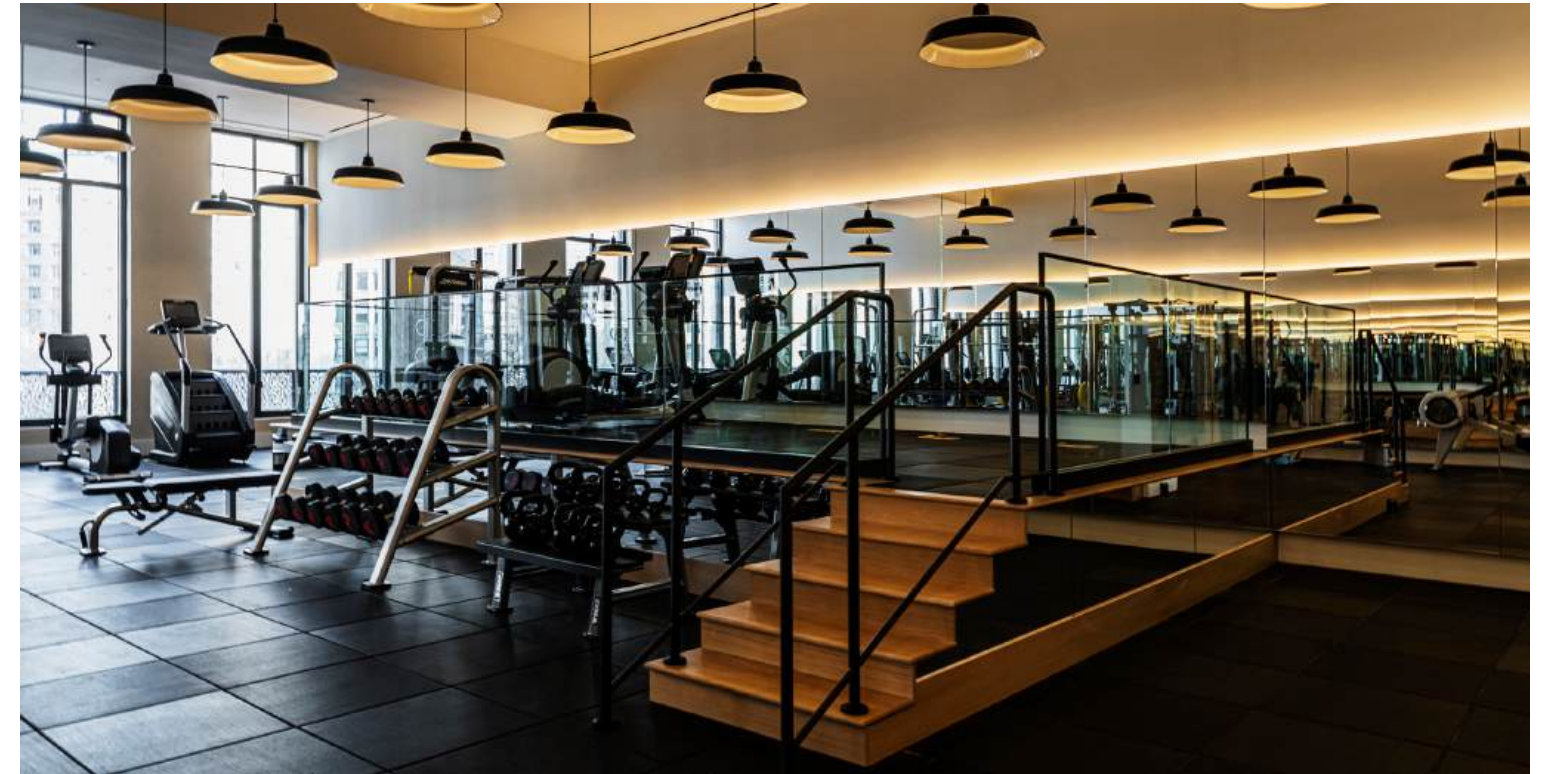


25 PARK ROW





25 PARK ROW: Gallery



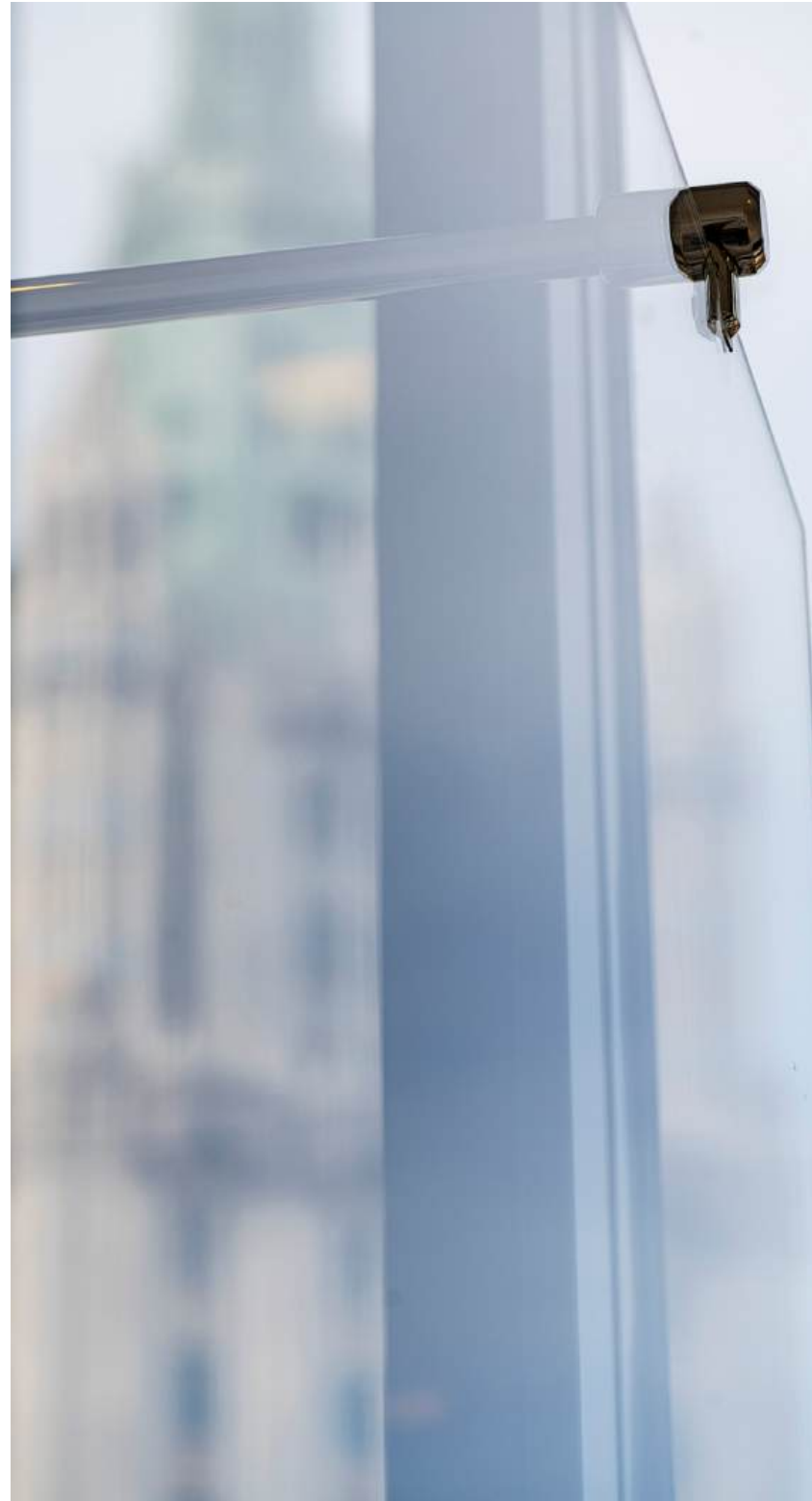
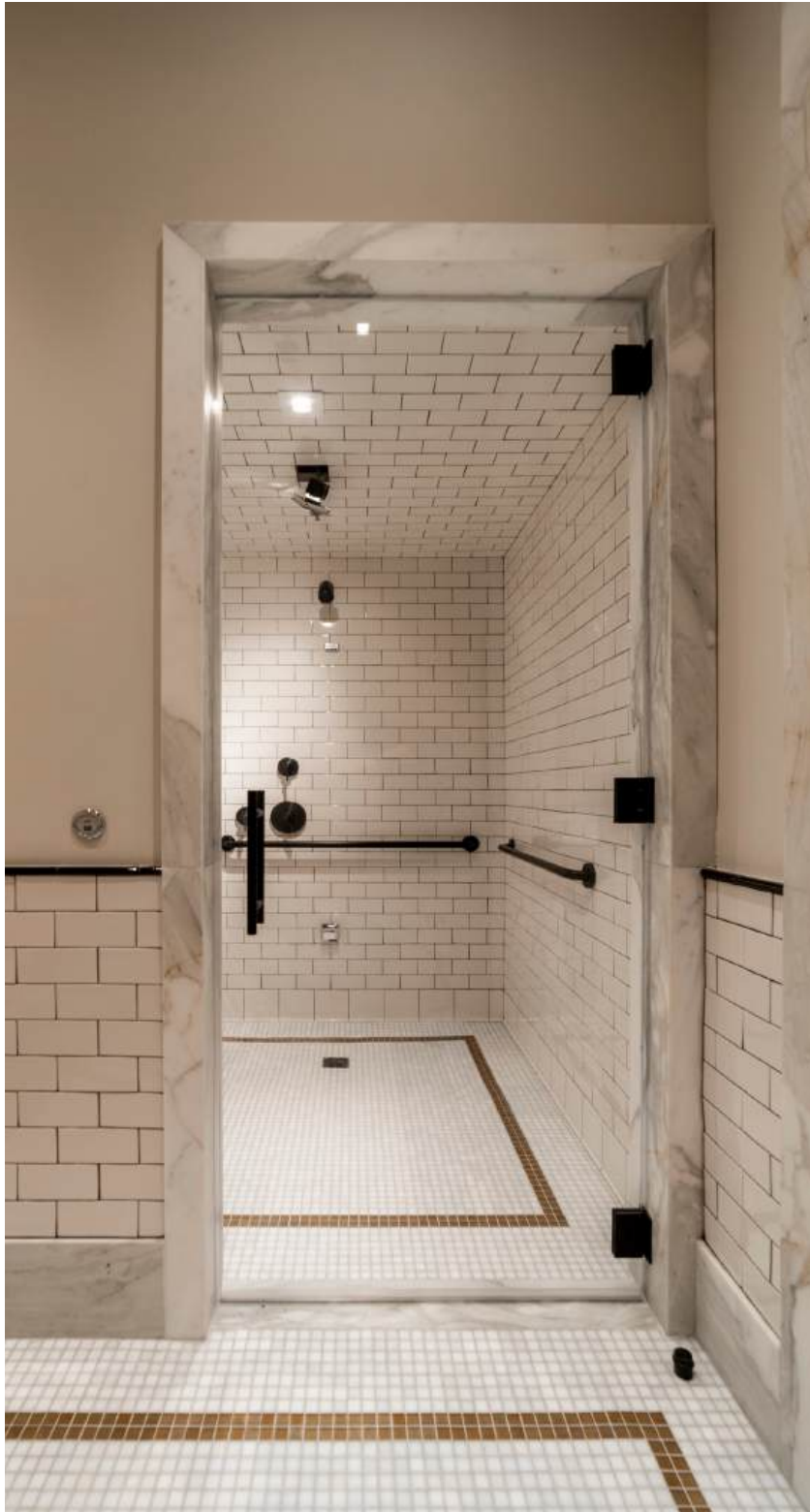


25 PARK ROW: Gallery





25 PARK ROW RESIDENCES: Gallery





## 25 PARK ROW: Solutions

### ARCHITECTURAL SYSTEMS



**Luconi Slim Doors:** Tailored for American market standards.

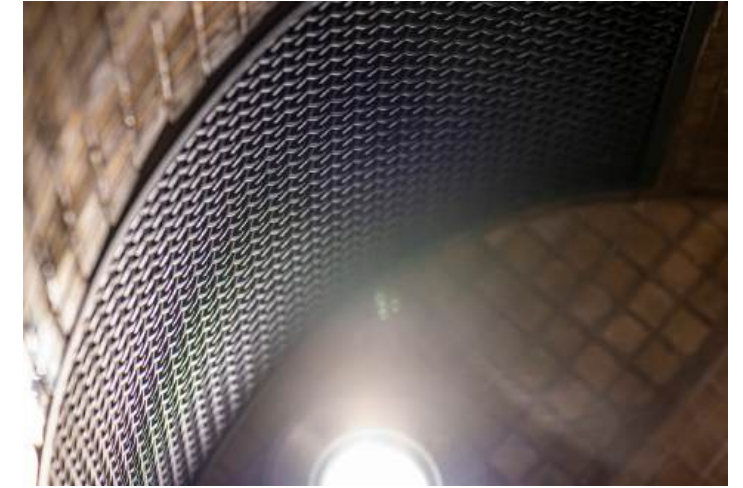


**Antique Mirrors:** Employed in swimming areas and gyms.

### MATERIALS



**Elevator Portals:** Glass enhancements in transit areas.



**Mesh**



**Large Light Boxes:** Integrated LEDs illuminate pool areas.

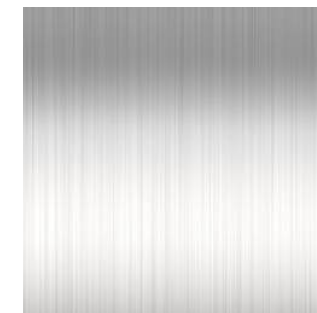


**Residential Bath**

### MATERIAL FINISHES



**Aluminum**



**Stainless Steel**



EQUINOX HOTEL





## EQUINOX HOTEL: Identifying Challenges



**Intricate Design Collaboration:** Teamed with Rockwell Design Group on details.

**Tight Schedule Fulfillment:** Components measured, made, installed in three months.

**Multi-Trade Coordination:** Managed electrical, lighting, and more trades.

**High-End Material Use:** Ensured custom materials matched design vision.

**Complex Installations:** Utilized lifts and scaffolding for large pieces.





## EQUINOX HOTEL: Strategic Solution Development



**Unique Architectural Features:** Created glass walls and metal mesh enclosures.

**Custom Fabrication:** Fireplace enclosures, movable walls tailor-made.

**Supplier Collaboration:** Worked with top-tier suppliers for quality consistency.

**Efficient Management:** Streamlined operations with Tishman and Rockwell.

**Advanced Engineering:** Utilized cutting-edge techniques for complex setups.



## EQUINOX HOTEL: Implementation and Deployment

**Precision Installation:** Extensively installed glass and metal with accuracy.

**Rigorous Quality Control:** High standards maintained for all materials.

**Team Coordination:** Ensured seamless collaboration across all project entities.

**On-Schedule Completion:** Met tight deadlines without quality sacrifice.

**Design Functionality Balance:** Merged functional needs with high-end aesthetics.





EQUINOX HOTEL





EQUINOX HOTEL: Gallery





**EQUINOX HOTEL: Gallery**





**BACCARAT HOTEL & RESIDENCES**





## BACCARAT HOTEL & RESIDENCES: Identifying Challenges



**Budget Constraints:** Cost-effective solutions essential for hospitality.

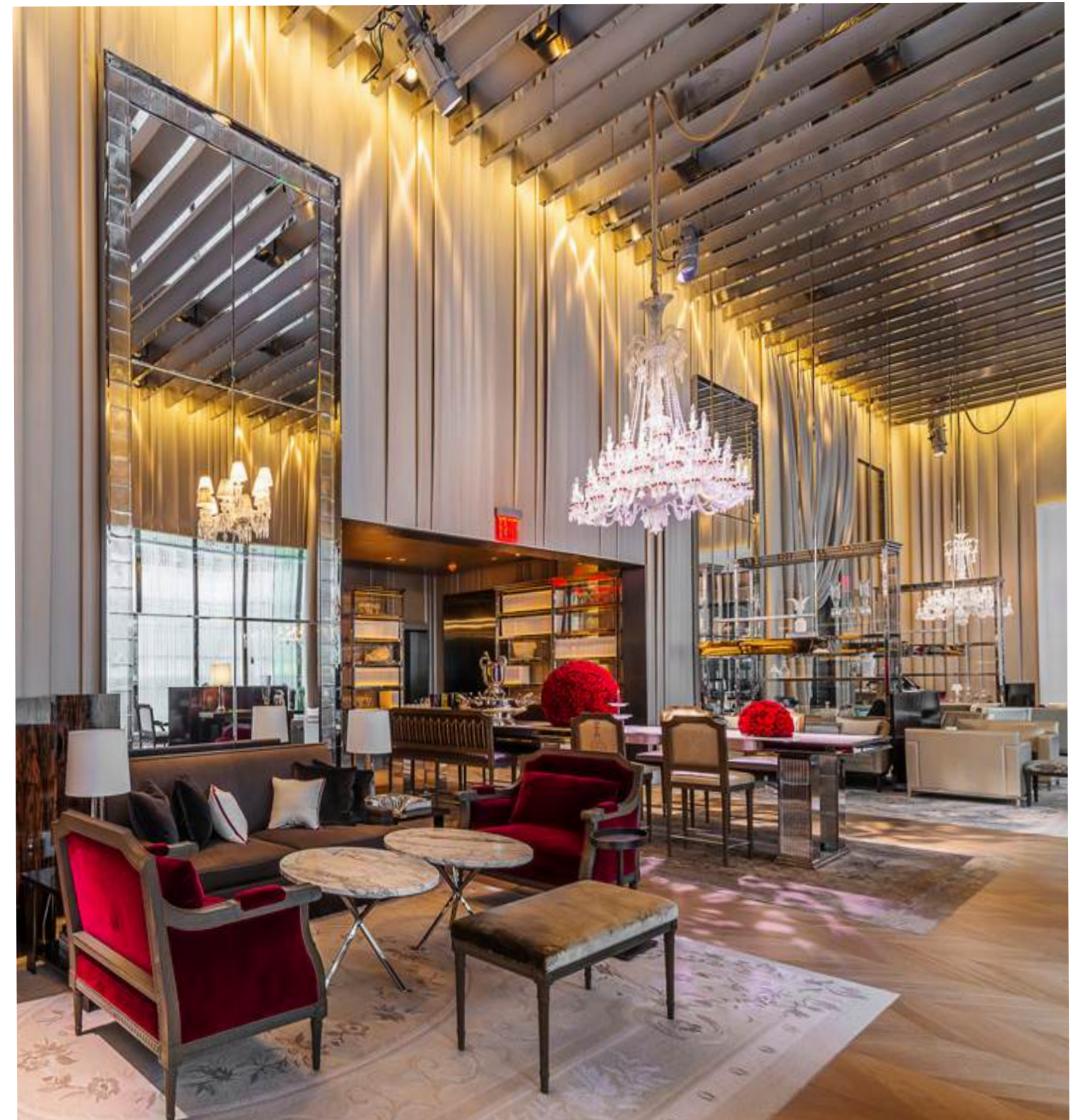
**Material Durability:** Required materials to withstand frequent use.

**Aesthetic Requirements:** High-end, luxurious designs mandatory.

**Dual Finish Metals:** Needed both polished and brushed surfaces.

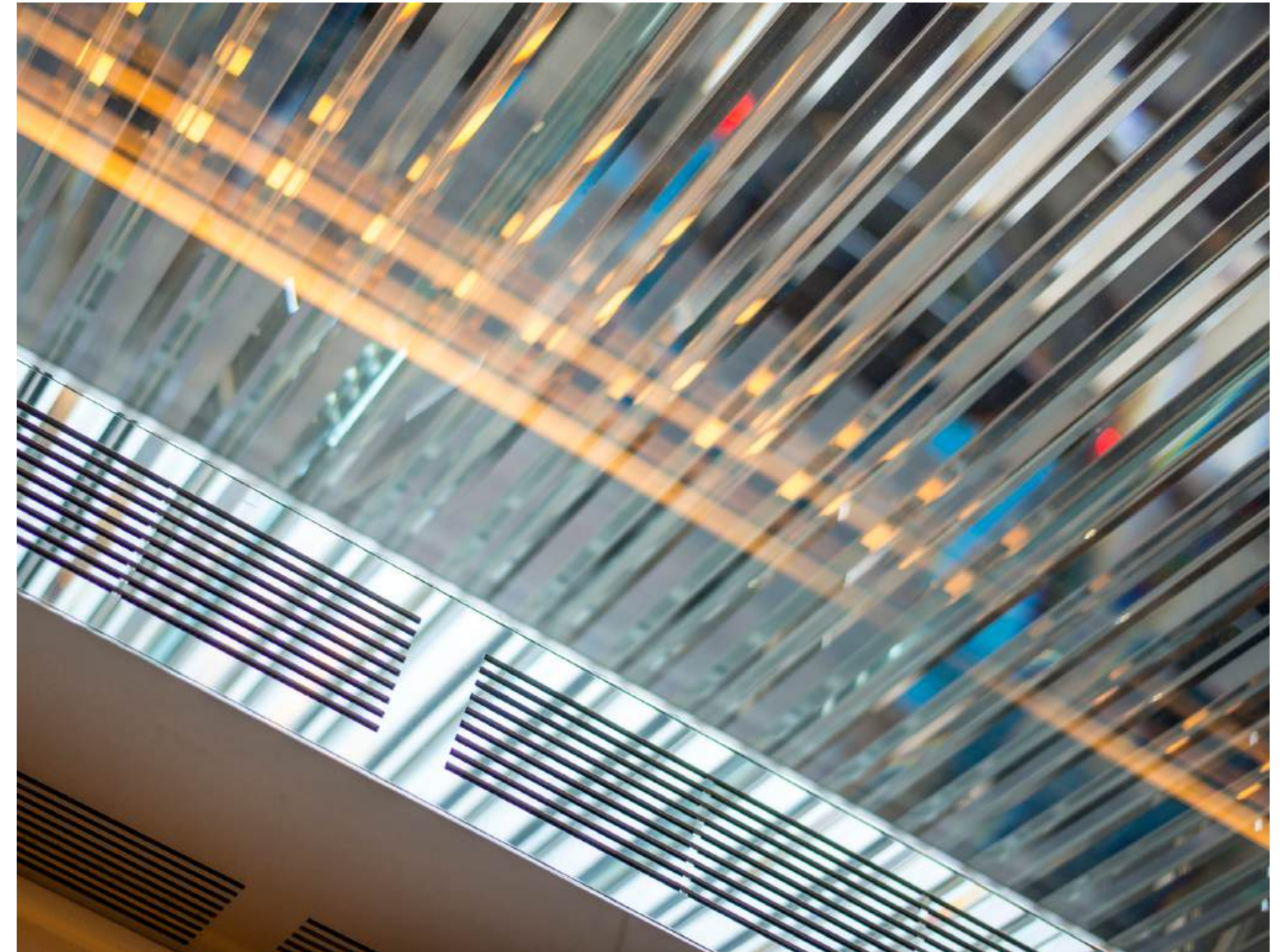
**Invisible Attachments:** Mirrors required hidden fixings for luxury.

**Product Development:** Innovative solutions for mirror attachments needed.





## BACCARAT HOTEL & RESIDENCES: Strategic Solution Development



**Innovative Solutions:** Developed new attachment methods with 3M.

**Luxury Emphasis:** Focused on high-end, sophisticated material feel.

**Custom Metalwork:** Created dual-finish metal fins for depth.

**Mirror Attachment Tech:** Collaborated with 3M on new techniques.

**Seamless Integration:** Ensured mirrors attached without visible seams.



## BACCARAT HOTEL & RESIDENCES: Implementation and Deployment

**Structural Solutions:** Developed secure, innovative products for attachments.

**Comprehensive Installation:** Ensured seamless aesthetic and functional integration.

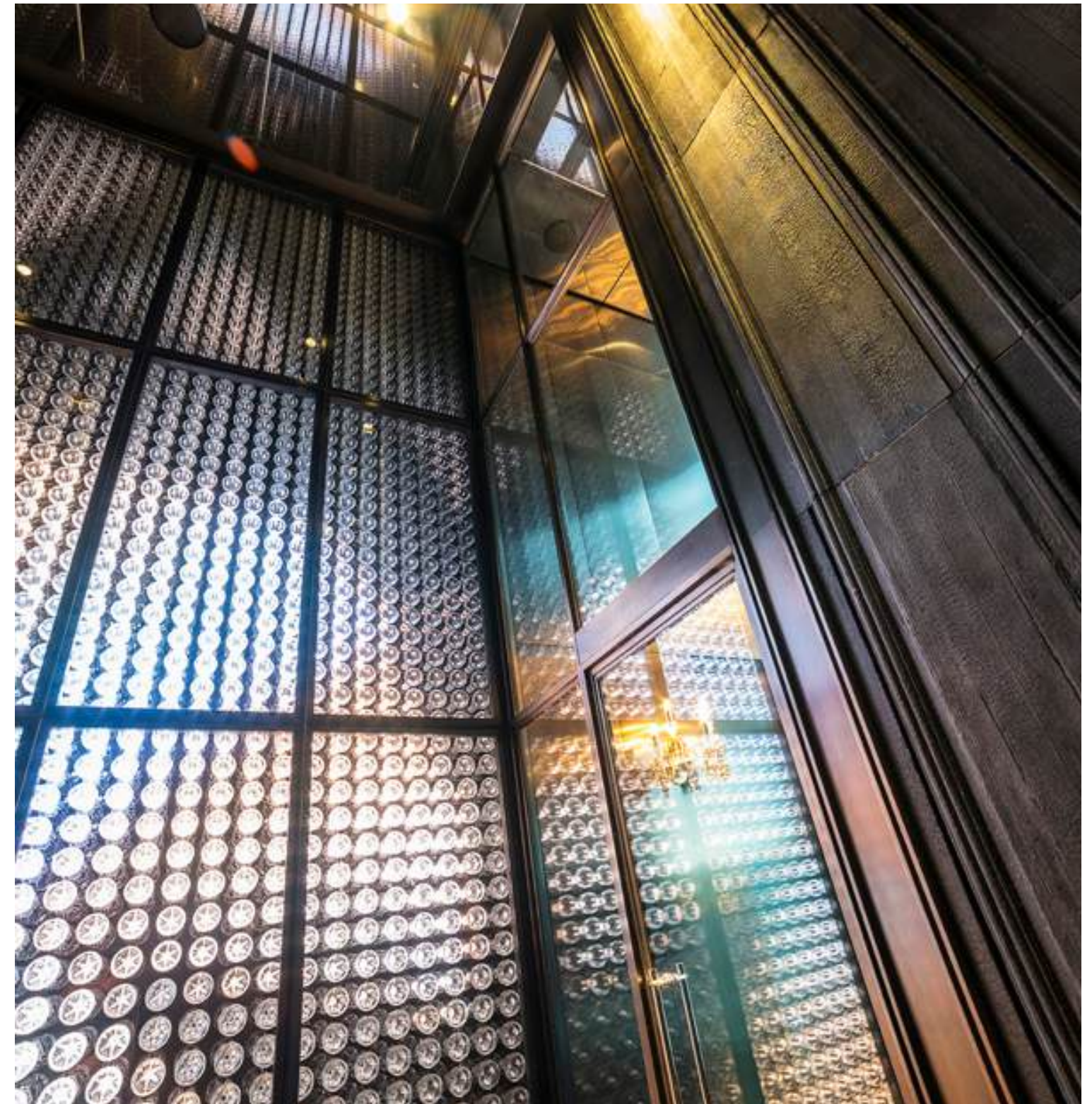
**Technical Coordination:** Integrated complex metalworks flawlessly.

**Innovative Fabrication Techniques:** Employed in kitchens and decorative elements.

**Structurally Sound Installations:** Focused on secure, elegant setups.

**Detail-Oriented Execution:** Maintained high-end finishes across all fixtures.

**Unified Design Execution:** Worked closely with multiple design teams for cohesion.



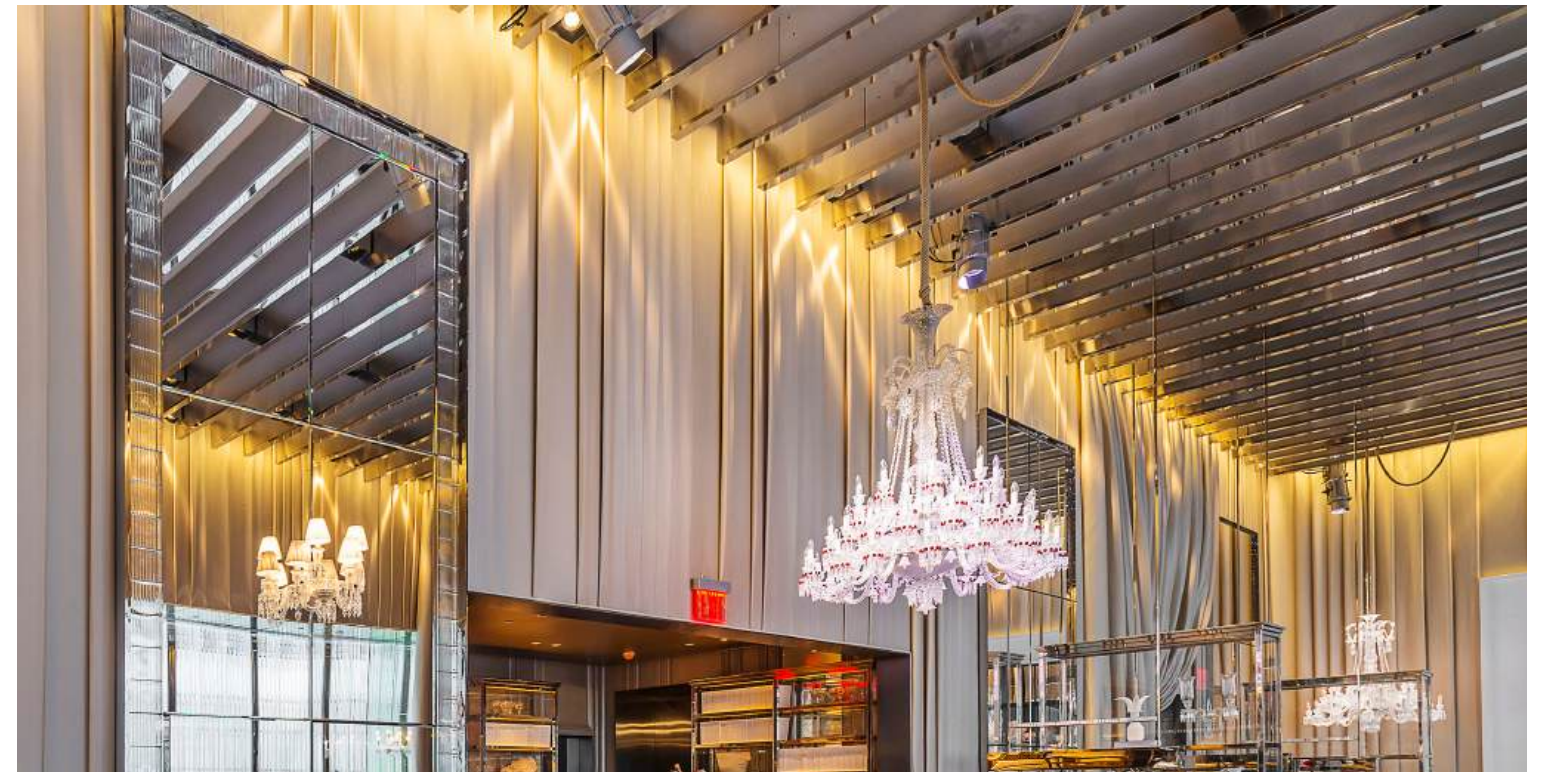


## BACCARAT HOTEL & RESIDENCES



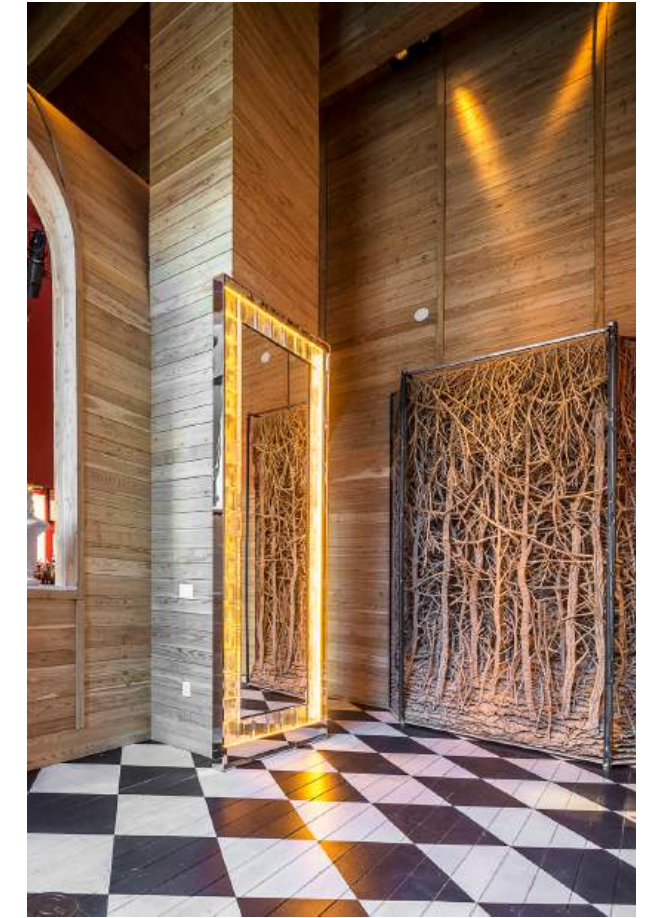


## BACCARAT HOTEL & RESIDENCES: Gallery





**BACCARAT HOTEL & RESIDENCES: Gallery**



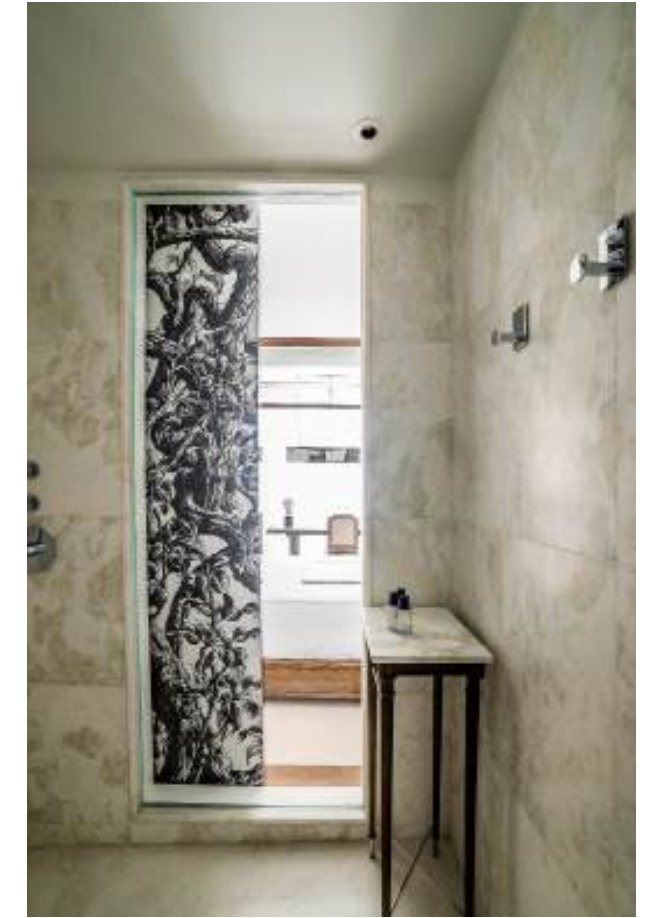


**BACCARAT HOTEL & RESIDENCES: Gallery**





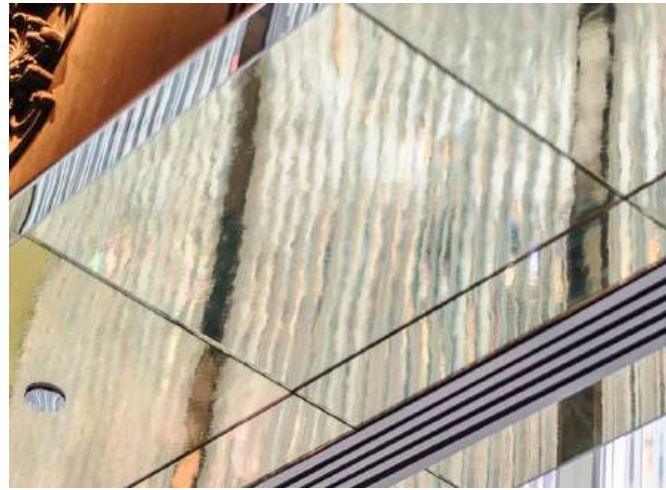
**BACCARAT HOTEL & RESIDENCES: Gallery**





## BACCARAT HOTEL & RESIDENCES: Solutions

### ARCHITECTURAL SYSTEMS



**Invisible Mirror Attachments:** Luxury mirrors installed with hidden fixtures.



**Dual-Finish Metal Fins:** Provided visual depth with polished and brushed surfaces.



**Fabric Laminated Mirrors:** Enhanced luxury with innovative fabrication.



**Seamless Structural Products:** Developed for secure, elegant installations.

### MATERIALS



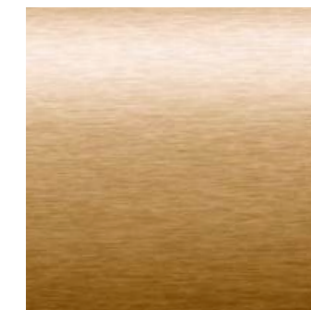
**Durable Luxury Materials:** Chosen for frequent use and aesthetic appeal.



### MATERIAL FINISHES



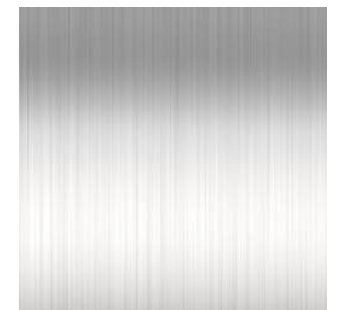
**Aluminum**



**Brass**



**Bronze**



**Stainless Steel**

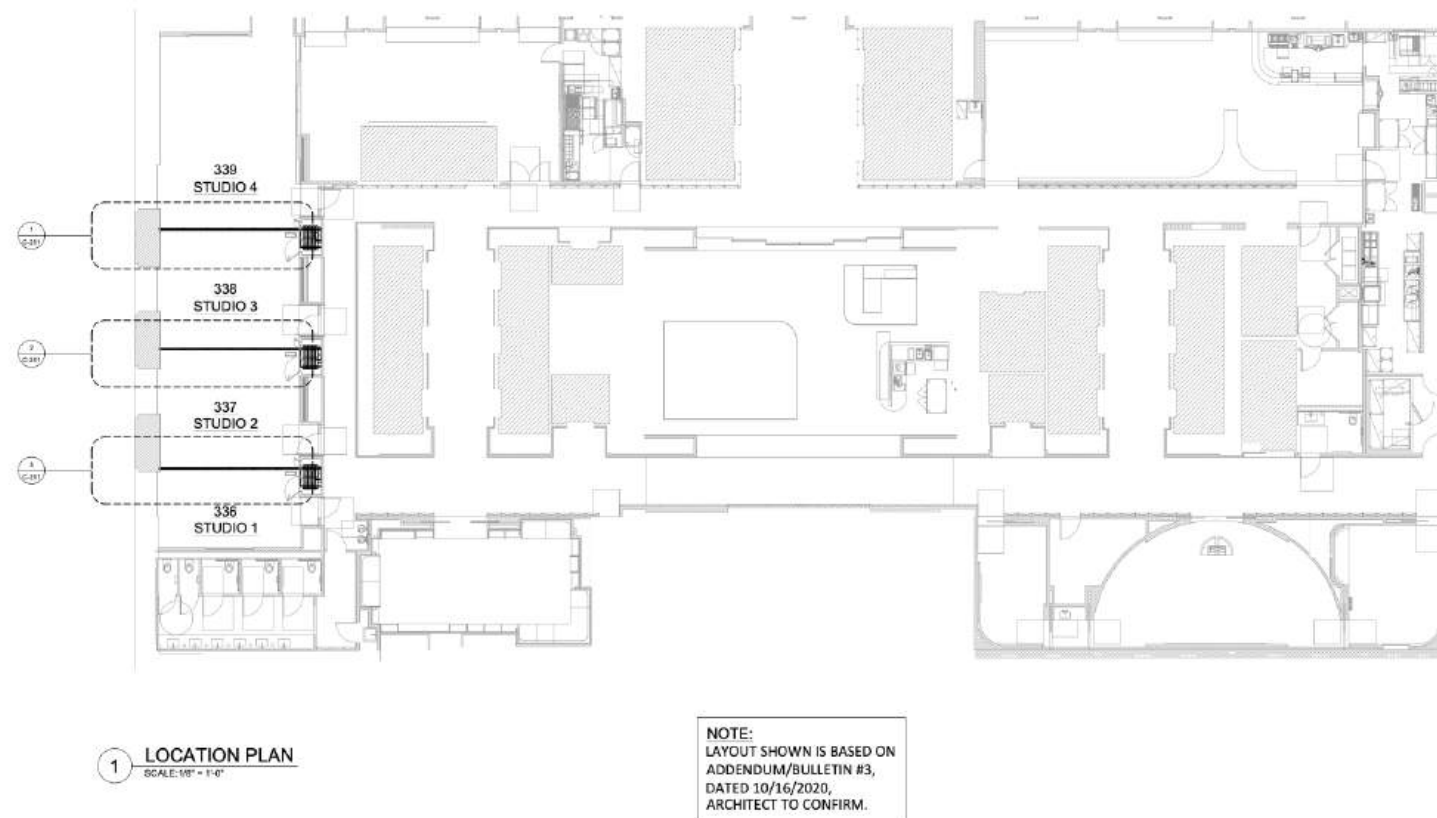


550 MADISON





## 550 MADISON: Identifying Challenges



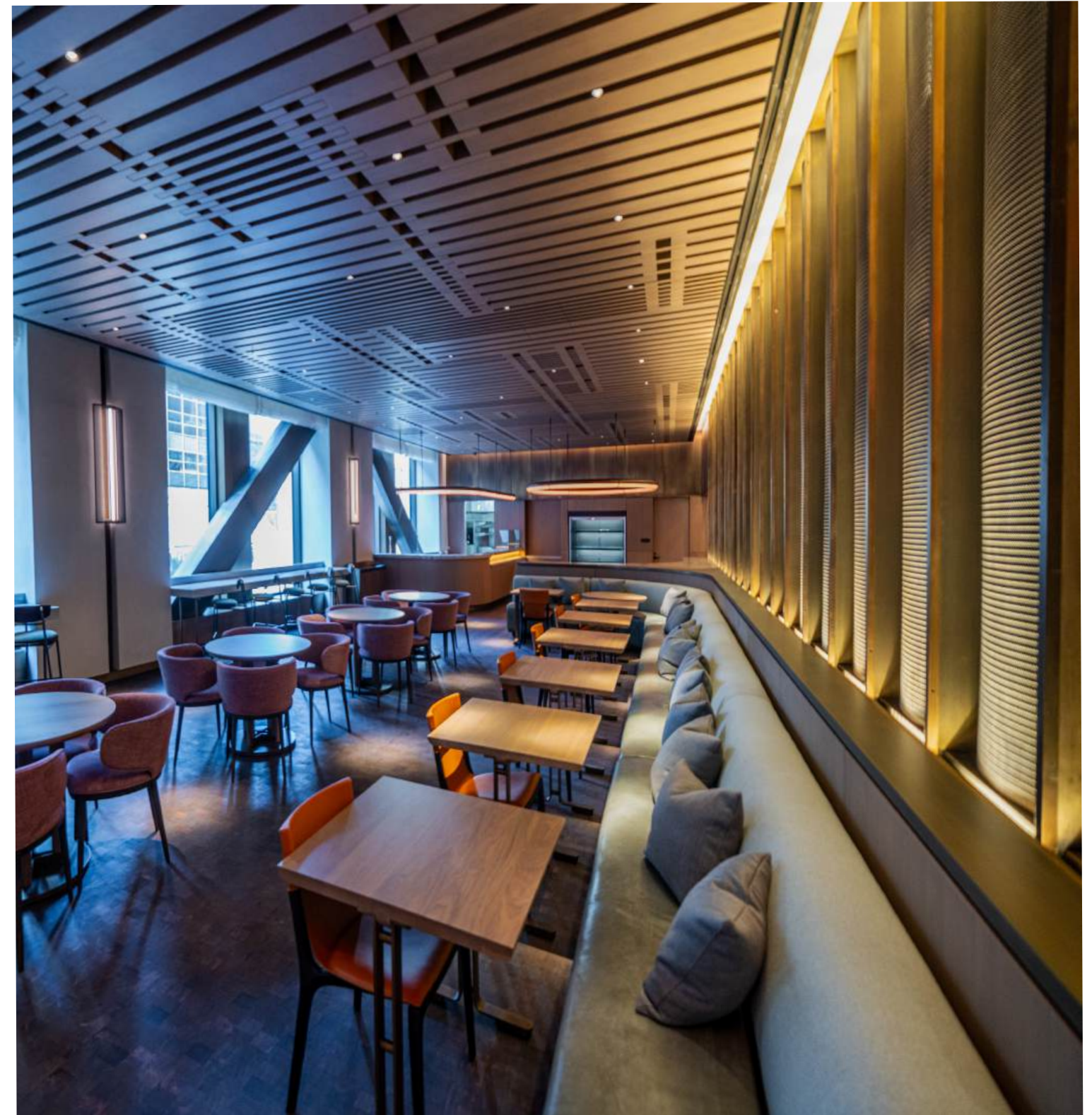
**Architectural Integration:** Modern designs meet historic architecture.

**Aesthetic Enhancement:** Elevating aesthetics with high-end materials.

**Functional Requirements:** Privacy and openness balanced effectively.

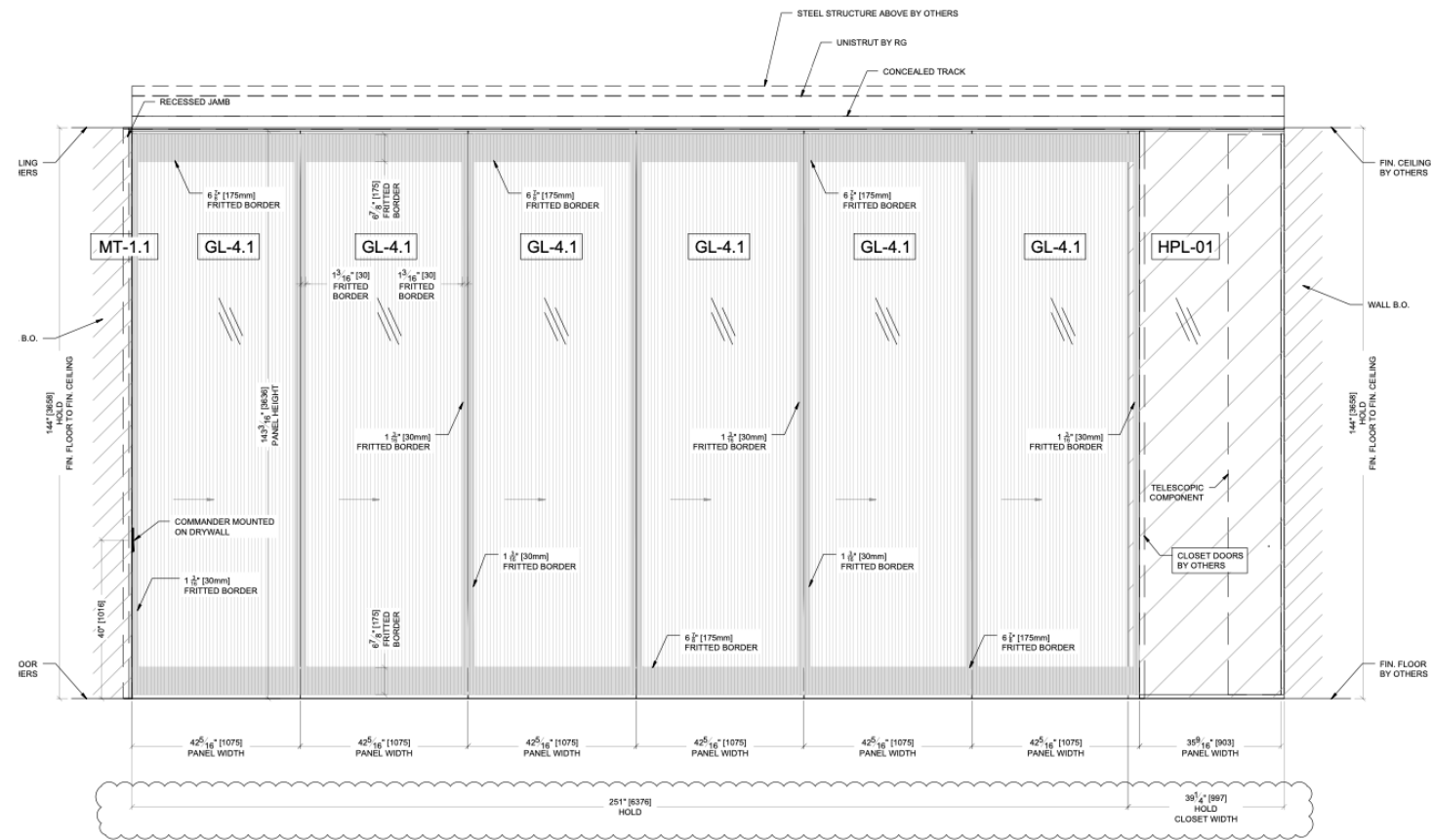
**Material Durability:** Durable materials for luxury settings.

**Design Consistency:** Cohesive aesthetic throughout the project.





# 550 MADISON: Strategic Solution Development



TYPICAL ELEVATION  
SCALE: 3/4" = 1'-0"



**Innovative Glass Solutions:** GlassSTACKWALL for elegance and privacy.

**Custom Bronze Doors:** Hand-finished doors blend with classic architecture.

**Enhanced Entryways:** GlassDOOR systems with bronze mesh.

**Luxury Cladding:** Extensive brushed bronze enhances luxury.

**Artistic Accents:** Fluted glass and bronze transform Club Level.



## 550 MADISON: Implementation and Deployment

**Precision Installation:** Custom doors and cladding meticulously installed.

**Quality Assurance:** High craftsmanship standards maintained.

**Seamless Functionality:** Functional excellence in moving systems.

**Light and Privacy Management:** Balanced light with strategic glass/mesh placement.

**Unified Aesthetic Appeal:** Consistent visual theme enhances grandeur.





550 MADISON



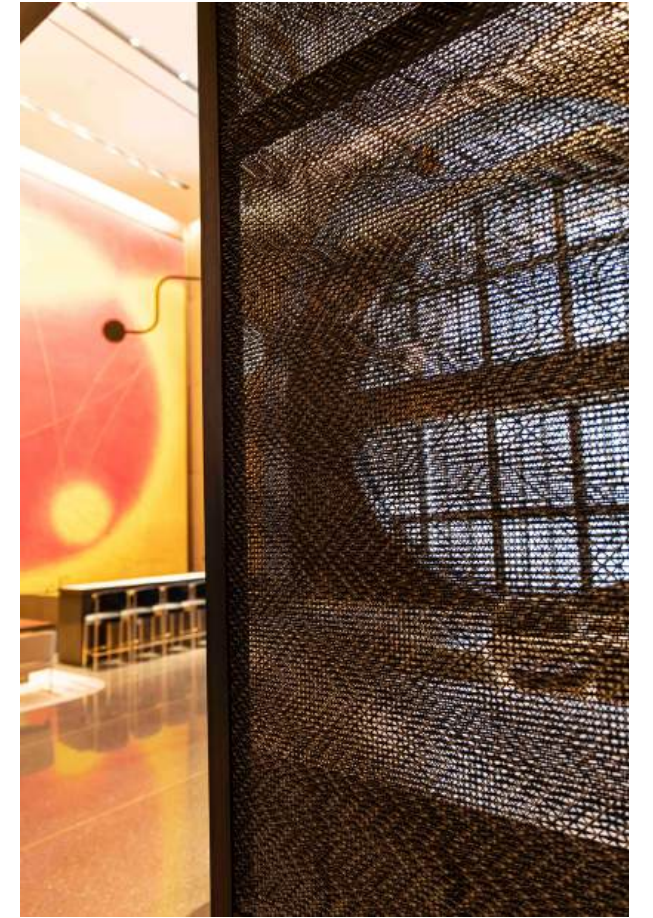
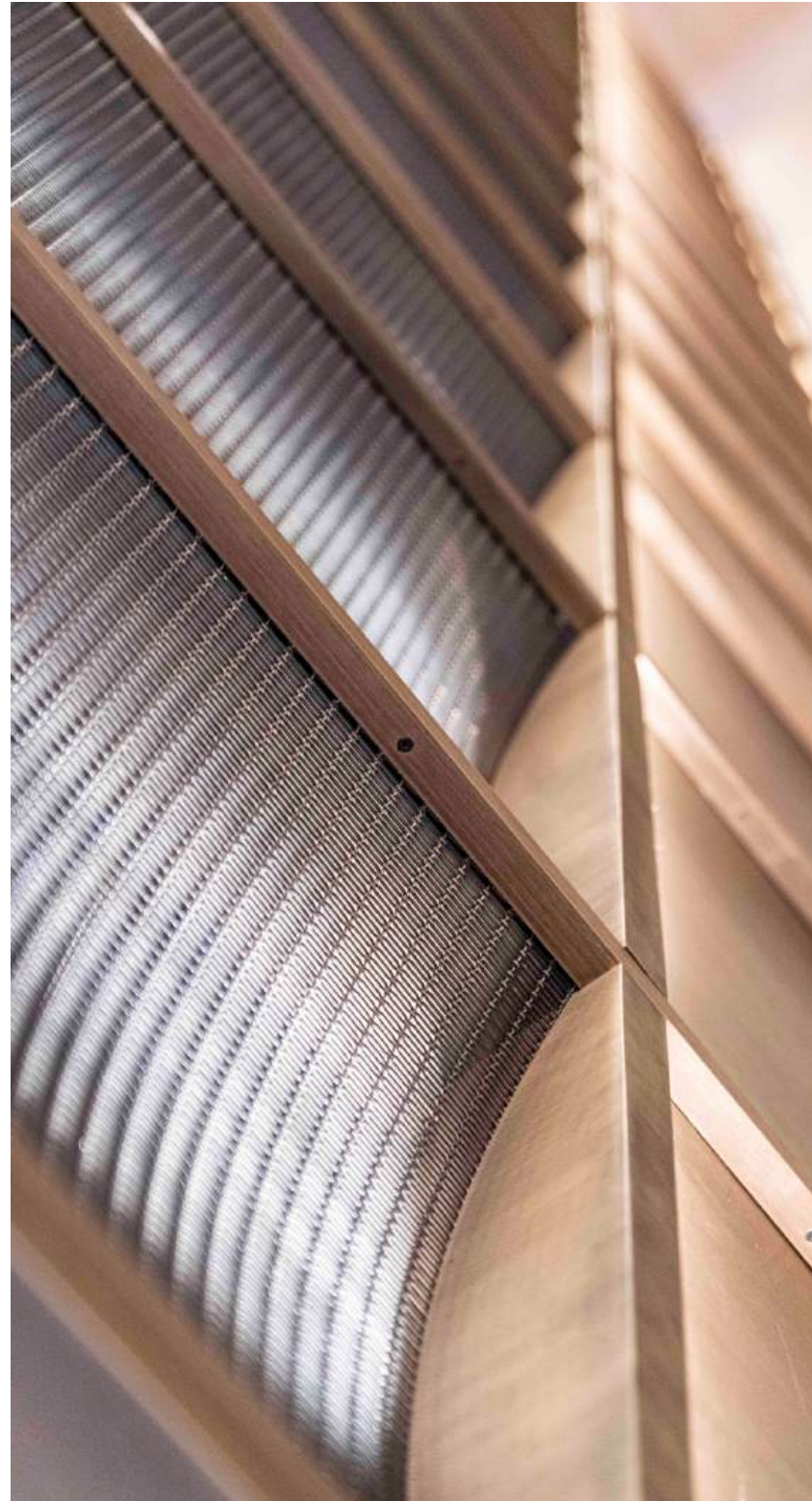


550 MADISON: Gallery





550 MADISON: Gallery





## 550 MADISON: Solutions

### ARCHITECTURAL SYSTEMS



**Hand-Finished Brushed Bronze:** Used in doors, cladding, accents.



**Custom Bronze Mesh Panels:** Applied in doors and walls for aesthetics.

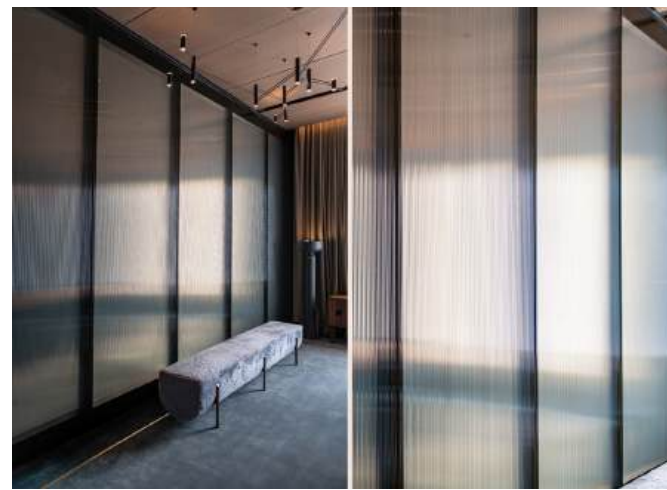
### MATERIALS



**Decorative Mesh:** Enhances continuity and sophistication.



**Fluted Glass:** Adds elegance and depth visually.

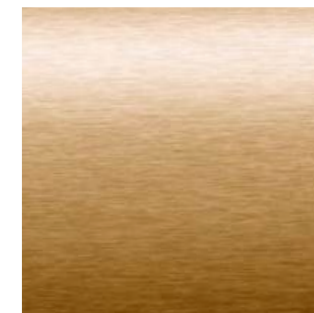


**High-Quality Glass:** Employed in STACKWALL and Telescopic systems.

### MATERIAL FINISHES



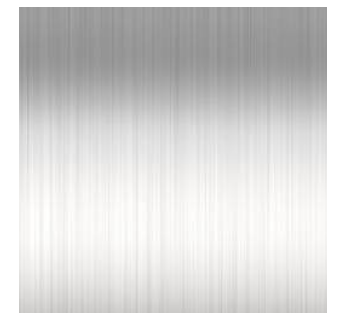
**Aluminum**



**Brass**



**Bronze**



**Stainless Steel**



**MANDARIN ORIENTAL RESIDENCES**



## MANDARIN ORIENTAL RESIDENCES: Identifying Challenges

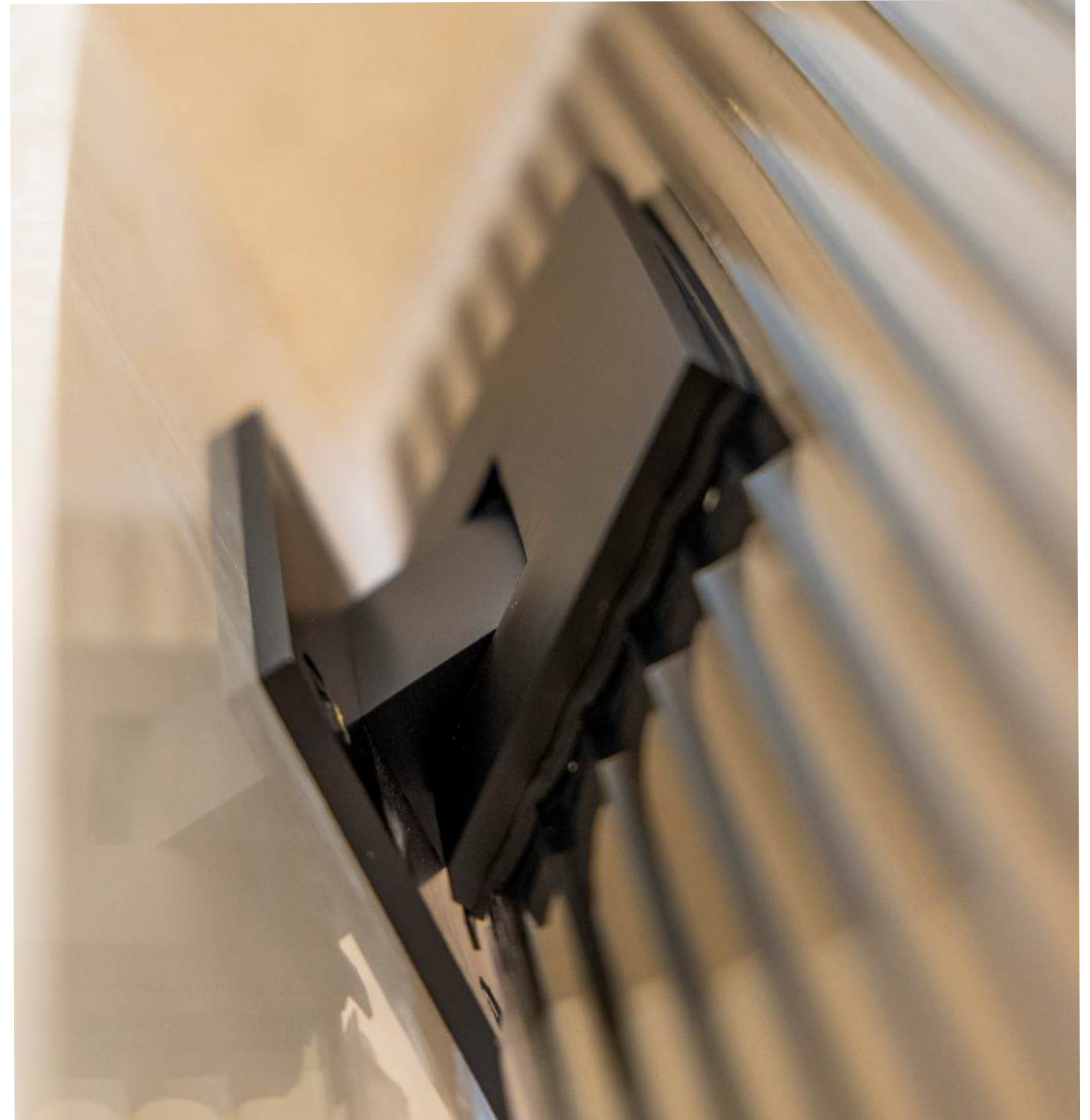


**Alternative Material:** Required a substitute for traditional clear monolithic glass.

**Moisture Resistance:** Needed to ensure the glass could withstand a wet environment.

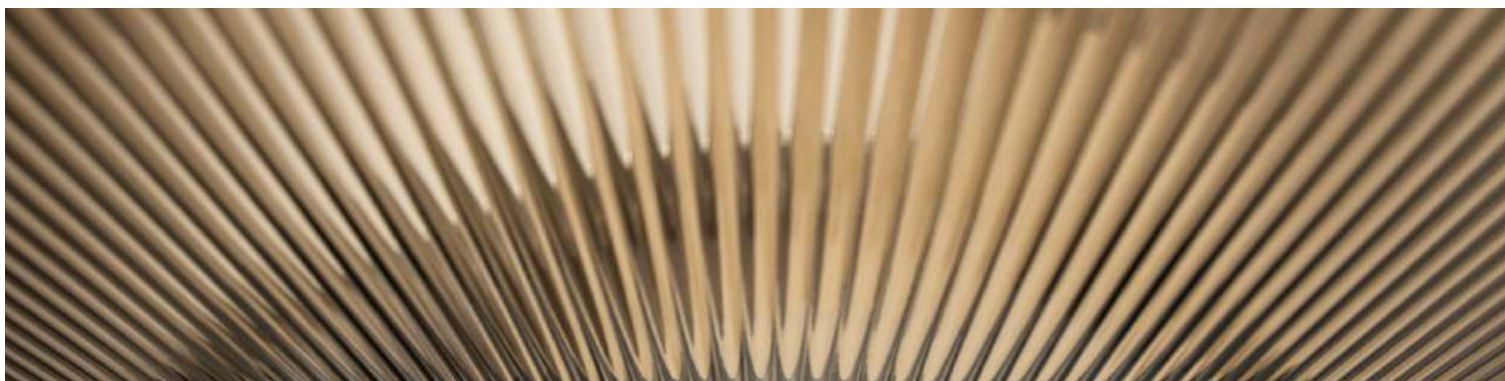
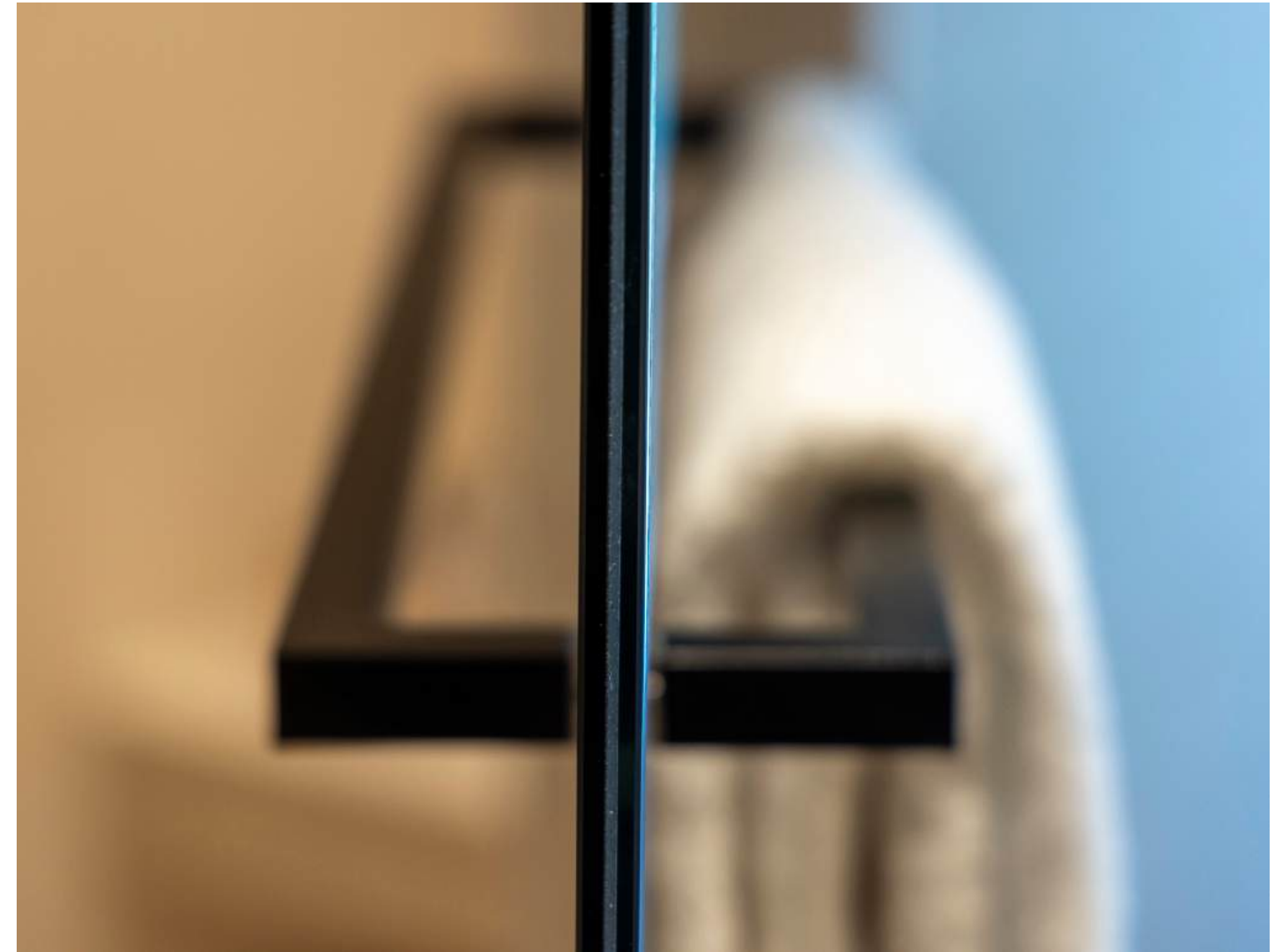
**Hardware Engineering:** Required support for the door with only 2 hinges instead of the typical 3.

**Aesthetic Matching:** Needed to match the hardware finish with surrounding fixtures.





## MANDARIN ORIENTAL RESIDENCES: Strategic Solution Development



**Glass Selection:** Chose a unique combination of bronze fluted glass and bronze flat glass laminated together and tempered.

**Interlayer Use:** Used a special EVA hydrophobic interlayer during fabrication for optimal moisture resistance.

**Hardware Design:** Designed specialty hardware to support the door's weight with only 2 hinges.

**Custom Coating:** Applied a custom finish to all hardware to match the surrounding fixtures.



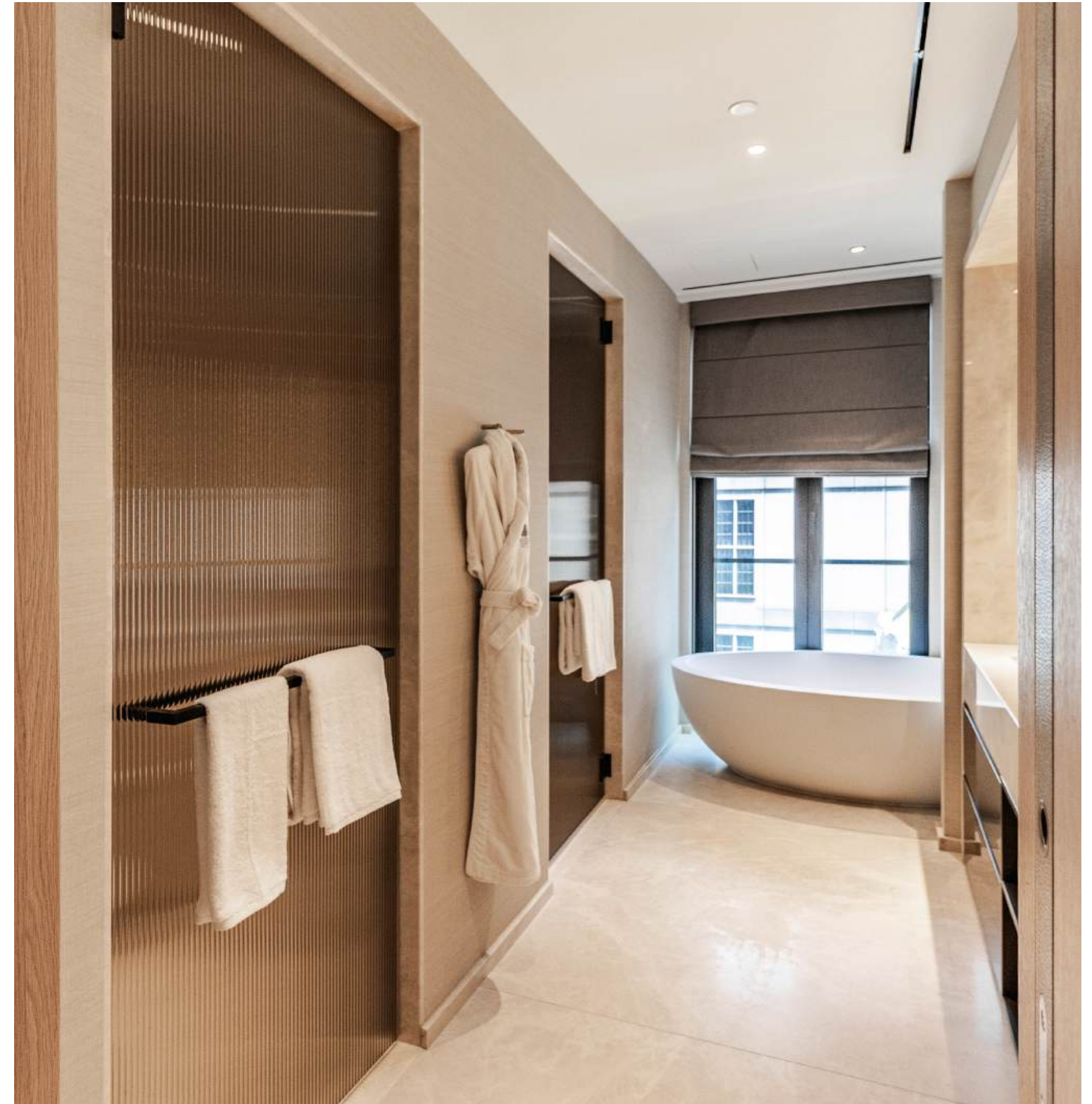
## MANDARIN ORIENTAL RESIDENCES: Implementation and Deployment

**Fabrication Process:** Fabricated the glass doors with the unique bronze fluted and flat glass combination.

**Glass Lamination:** Laminated and tempered the glass using the special EVA interlayer for moisture resistance.

**Specialty Hardware:** Installed the doors using the custom-engineered specialty hardware with 2 hinges.

**Aesthetic Integration:** Achieved a cohesive aesthetic with custom-finished hardware matching the surrounding fixtures.





**MANDARIN ORIENTAL RESIDENCES**





**MANDARIN ORIENTAL RESIDENCES: Gallery**



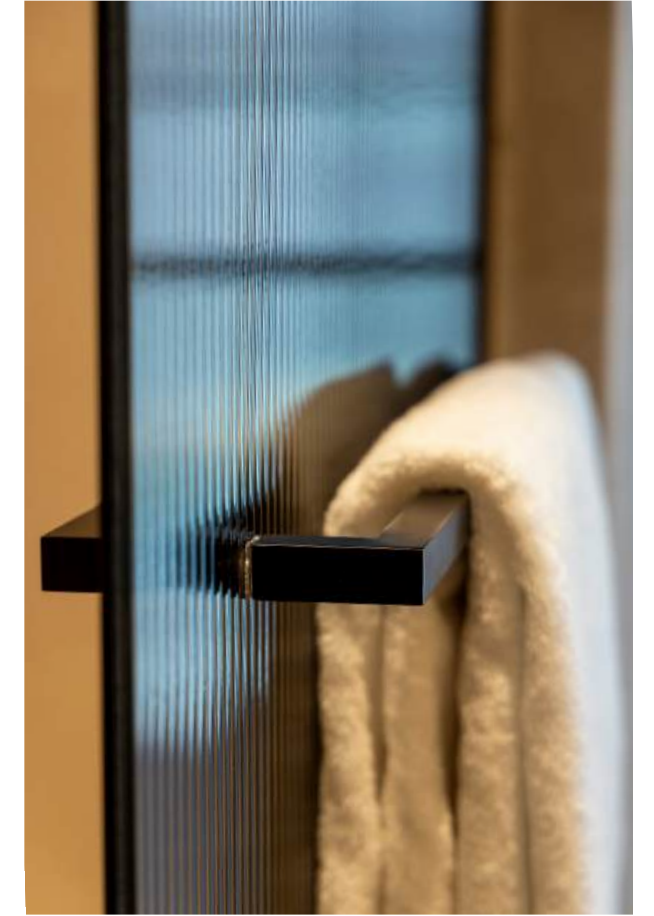


**MANDARIN ORIENTAL RESIDENCES: Gallery**





**MANDARIN ORIENTAL RESIDENCES: Gallery**





PREMIER RESIDENCES BATH COLLECTION





**PREMIER RESIDENCES: Full Height Shower Enclosure**





**PREMIER RESIDENCES: Full Height Shower Enclosure**





**PREMIER RESIDENCES: Electric Mirror**





**PREMIER RESIDENCES: Electric Mirror**





**PREMIER RESIDENCES: Vanities**





**PREMIER RESIDENCES: Vanities**





## PROJECT LIST - LOCATION

### EDUCATION & MUSEUM

American Coll. of Healthcare Exec.  
 American Museum of Natural History  
 Brooklyn Museum  
 Bridgewater State University  
 Central Catholic HS  
 Chabad of Charleston  
 Columbia University  
 Credit Suisse  
 Gateway Center  
 Guggenheim Museum  
 Indiana University, Ernie Pyle Hall  
 LSU Beach Volleyball Stadium  
 Smithsonian  
 Skyscape  
 Texas A&M Research Facility  
 The New School  
 Uni. of Georgia West End Stadium  
 University of Illinois  
 University of Phoenix

### CORPORATE

8000 Avalon  
 Allstate  
 Amgen  
 Ashurst  
 Bergdorf Goodman  
 Billabong  
 Blackstone  
 Bloomberg  
 Carrilon Capital Mgt.  
 Capgemini  
 CBRE  
 CetraRuddy  
 Citibank  
 Citigroup  
 Coca-Cola  
 Conoco Phillips  
 Convene  
 Credit Suisse  
 CrossFirst

CSS Expansion  
 DaDonq  
 Discover  
 Domain Building 11  
 Dominion Workplace  
 EDF Trading  
 EMI Records  
 Empelcon  
 Facebook  
 Fannie Mae  
 Freddie Mac  
 Gersller LaRossee  
 Hargrove Engineers  
 Harman  
 Havas  
 Herman Miller  
 Holland and Knight  
 Hudson Advisors  
 Ignition One  
 Incyte Corporation  
 Infor  
 JP Morgan  
 JP Offices  
 Levi Strauss & Co.  
 Len A and Builders  
 McLaren  
 Major League Soccer  
 Martha Stewart Corp.  
 Mead Johnson  
 Mercedes-Benz  
 MetLife  
 Moet Hennessy  
 Mothra  
 MTV  
 NBC  
 Nike HQ Portland  
 NY Stock Exchange  
 Paul Hastings  
 Pillsbury  
 Pyreneeon  
 Raytheon  
 Ridgehill

Samsung  
 Schwartz Showroom  
 Scorpion Valencia  
 Smithsonian Channel  
 Splunk  
 TD Bank  
 Third Point Management  
 UFC HQ  
 Warner Media  
 Wells Fargo  
 Zenergy

### HOSPITALITY

Chase Bank  
 Clara Maass Medical Center  
 Detroit Medical Center  
 Hershey Medical Center  
 Jersey Shore Medical Center  
 Kakila Women & Children's Hospital  
 Memorial Sloan Kettering  
 Mt. Sinai  
 NE Medical Center Neuro Lab  
 New York Stern Cell Research  
 Penn Presbyterian Medical Center  
 Weill Cornell Medical Center  
 550 Madsion  
 25 Park Row  
 Baccarat Hotel  
 Equinox Hotel  
 Four Seasons Hotel  
 Hard Rock Hotel

### RETAIL

Bottega Veneta  
 Cadillac  
 Christian Dior  
 Downtown by Philippe Starck  
 Givenchy  
 Louis Vuitton

### HEALTH CLUB & SPA

225 E. 38th Street  
 1500K Fitness Center  
 David Barton Gym  
 Equinox  
 Fountain Place Fitness Center  
 Gym Source  
 Langan Chuan Body + Soul  
 Preserve Gym  
 Reebok  
 Silver Legacy Spa  
 Spa 88  
 The Gym at 8th and Main  
 Ventana Spa  
 YMCA Reston, VA  
 RETAIL

### TRANSPORTATION & CIVIC

Amtrak, New York Moynihan Train Hall  
 Austin Bergstrom Intl. Airport  
 BWI Airport  
 CBU Event Center  
 Delta Sky Lounges  
 Detroit Lions Training Facility  
 Easton Tower  
 George Bush Intl. Airport  
 Hobby Airport  
 LaGuardia Airport, TSA Check Point  
 LaGuardia Airport, Hyatt Place  
 Madison Square Garden  
 Newark Airport, Terminal One  
 Newark Airport, Terminal B  
 Oculus Center  
 PA Convention Center  
 PDX Airport  
 Philadelphia Intl. Airport  
 Ridgehill Mall  
 United Airlines T1 Clubs  
 Washington DC Convention Center  
 Westlake Center



## ARCHITECTS

AECOM  
 Arquitectonica  
 BIG  
 CallisonRTKL  
 Cannon Design  
 Centra Ruddy  
 Clodagh Design  
 CookFox  
 Corgan  
 DGA  
 DLR  
 Dyer Brown  
 Ewing Cole  
 Fogarty Finger  
 Fusion Design  
 FXCollaborative  
 Gensler  
 Gresham Smith  
 HBA  
 HDR  
 HKS  
 HLW  
 HOK  
 IA Interior  
 KPF  
 Leo A. Daly  
 NBBJ  
 Nelson  
 Perkins&Will  
 Perkins Eastman  
 Peter Marino  
 Populous  
 Rafael Vinoly  
 Rockwell  
 Smith Group  
 SOM  
 Stantec  
 Studios  
 Ted Moudis  
 TPG  
 Wilson  
 ZGF

## GENERAL CONTRACTORS

Tishman/AECOM  
 Hunter Roberts  
 Plaza Construction  
 JRM Construction  
 Structuretone  
 NewLine Construction  
 Triton Construction  
 CM & Associates  
 CC+M  
 OmniBuild  
 Shawmut  
 MK Construction  
 UAG  
 Rand  
 JT Magen  
 Gilbane  
 Benchmark  
 Suffolk  
 Turner

## OWNER-DEVELOPERS

Tishman/AECOM  
 Hunter Roberts  
 Plaza Construction  
 JRM Construction  
 Structuretone  
 NewLine Construction  
 Triton Construction  
 CM & Associates  
 CC+M  
 OmniBuild  
 Shawmut  
 MK Construction  
 UAG  
 Rand  
 JT Magen  
 Gilbane  
 Benchmark  
 Suffolk  
 Turner

## AWARDS

### 2013

Best of Year • **CARVART Metallic**

### 2014

Best of NeoCon • Silver • **CARVART Metallic**  
 GOOD DESIGN • Chicago Athenaeum • **CARVART Metallic**

### 2015

Best of NeoCon • Silver • **CI Collection**  
 GOOD DESIGN • Chicago Athenaeum • **CI Collection**  
 HIP • Honoree • **CI Collection**

### 2016

Best of NeoCon • Gold • **CARVART Contract**  
 HIP • Honoree • **glassBOX**

### 2017

Best of Year • Finalist • **CARVART by Soema**  
 Best of NeoCon • Silver • **CARVART by Soema**  
 HIP • Honoree • **glassCUBE**  
 Metropolis Likes • **glassCUBE**

### 2019

GlassBuild • Best in Show • **glassXL**

### 2020

Best of Year • **CARVART by GUSTAFS**

### 2021

Best of NeoCon • GOLD • **modularWALLCLAD**

### 2022

Best of NeoCon • SILVER • **CARVART Couture Collection 1**

### 2023

Cinta's America's Best Restroom • **BWI Airport Cubicles & Wall Clad**



---

## CAPABILITIES

**Custom Architectural Solutions:** Designing bespoke glass, metal, and wood systems tailored to specific project requirements.

**Innovative Glass Technology:** Offering advanced glass products with unique patterns, textures, and functionalities for aesthetic and practical applications.

**Integrated Material Solutions:** Combining various materials such as glass, metal, wood, stone, and CHPL for cohesive design solutions.

**Project Management:** Providing end-to-end project support, from initial design concepts to final installation.

**Sustainable Design Practices:** Implementing eco-friendly materials and processes in all projects.

**Collaboration with Architects and Designers:** Working closely with design professionals to achieve optimal results for commercial and residential spaces.

**Extensive Product Range:** Offering a wide variety of architectural products, including partitions, doors, cladding, lockers, and marker boards, all customizable to client specifications.

**Advanced Manufacturing:** Utilizing state-of-the-art manufacturing techniques to ensure high quality and precision in all products.

**Acoustic Solutions:** Designing products to improve sound control within spaces.

**Privacy Solutions:** Customizing levels of transparency and opacity to meet privacy requirements.

**Aesthetic Customization:** Tailoring designs to match specific visual requirements.

**Durability and Longevity:** Creating products that withstand wear and environmental factors.

**Easy Maintenance:** Designing solutions for low maintenance and easy cleaning.

**Rapid Prototyping:** Quickly creating prototypes for client approval.

**Installation Services:** Offering professional installation for all products.

**Technical Support:** Providing comprehensive technical support and guidance for product installation and maintenance.

**Safety Compliance:** Ensuring all products meet relevant safety standards and regulations.

**Visual and Functional Integration:** Integrating visual appeal with functional requirements for cohesive designs.

**Custom Pattern and Texture Development:** Creating unique patterns and textures to meet specific design needs.

**Global Reach:** Serving clients worldwide with innovative architectural solutions and products.



CARVART®