

# glassBATHDOOR

Our glassBATHDOOR line provides a full range of colors in laminated, tempered glass that is resistant to scratches, cleaning detergents and atmospheric agents since all colored areas are between glass panels. The ecological approach is evident from the raw materials and ingredients used to create the structures, which will also contribute to make public sanitary areas more attractive and enjoyable.

The glassBATHDOOR line is not just a passive product; they are a stylish and harmonious solution to match the glass environments we create. The hardware is in anodized aluminum with a protective finish.

The benefits of glassBATHDOOR is they provide all necessities in any sanitary project, giving the possibility to the architect or designer to have spherical glass solutions from one source.

Not only have we taken into consideration the strictness of the hygiene requirements of "Fast Traffic Sanitary Areas and Changing Facilities," but also the design, the wide range of colors needed, the engineering, the installation flexibility, the end users advantages and the ease of maintenance.



## SINGLE-SWING



Single-swing hinge.

## SELF-CLOSING



Single-swing adjustable hydraulic self-closing hinge with hold open position.



Lever handle fitted either with key/key lock or with free/engaged lock.

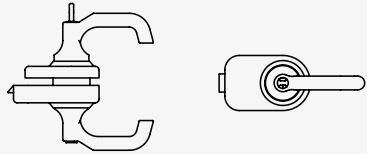


Steel ladder pull. Key lock without spring latch.

# glassBATHDOOR

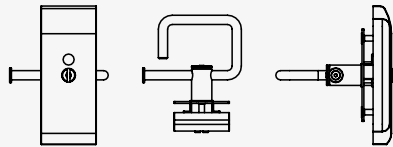
**Aluminum handle** (silver finish)

- A1 • Key-Key
- A2 • Free-Engaged
- A3 • Key-Pawl Lock



**Stainless steel lever**

- C1 • Free-Engaged
- C2 • Free-Engaged for people with disabilities



**Optional**

**System with floor spring door closer on double-swing double door:**

- Double steel grab bar

**System with floor spring door closer on hinged door:**

- Single steel grab bar (on the pull side)

**Key/Key lock:**

- Key/key without spring latch lock for doors with floor spring door closer

**Overhead door closer:**

- To be assembled on all hinged doors, except I and M

**Safety steel grab bar:**

- Safety steel grab bar (to be assembled on hinged doors with outward opening)

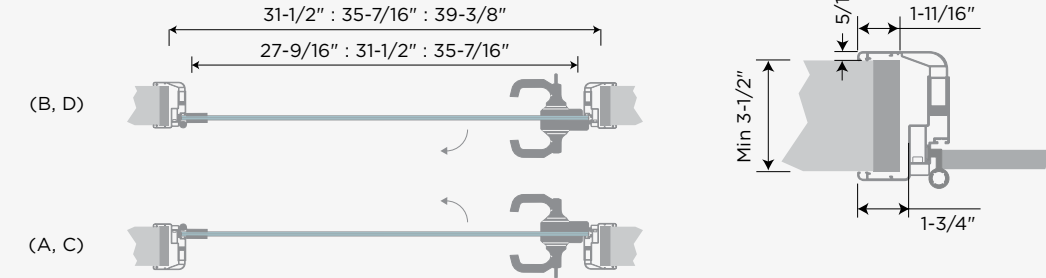
**Single or double vertical grab bar:**

- Stainless steel grab bar (length 18-1/8")

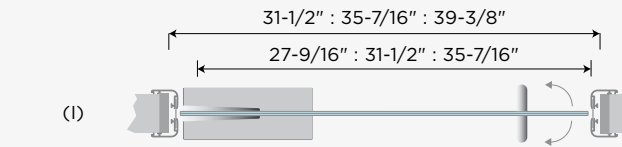
**Self-closing spring hinges :**

- Hinges with plates in stainless steel and eccentric spring mechanism for door styles A, B, C, D, I and M

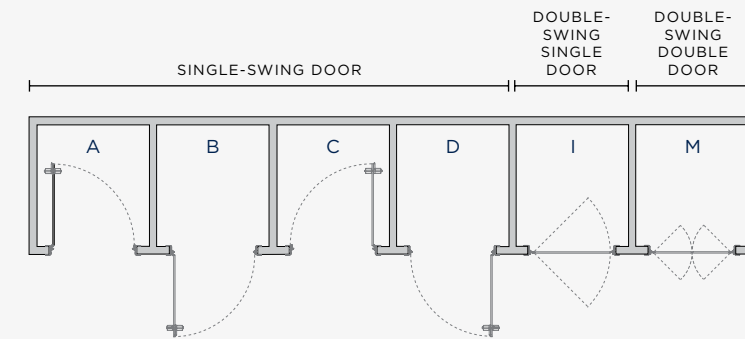
**Single-swing door with lever handle**



**Double-swing double door with floor door closers (without lock) and vertical double handle in steel**



**Types of openings**



# Colors

CARVART has curated glass colors and anodized aluminum finishes to assist in your design process. Should you require more options, contact CARVART or your sales representative, and we will partner with you to select from the other colors that are available.

### Glass Finishes

Available in both Smooth finish, when a high-gloss reflective look is desired, or an Etch finish which is non-reflective and minimizes fingerprints.

### Glass Colors

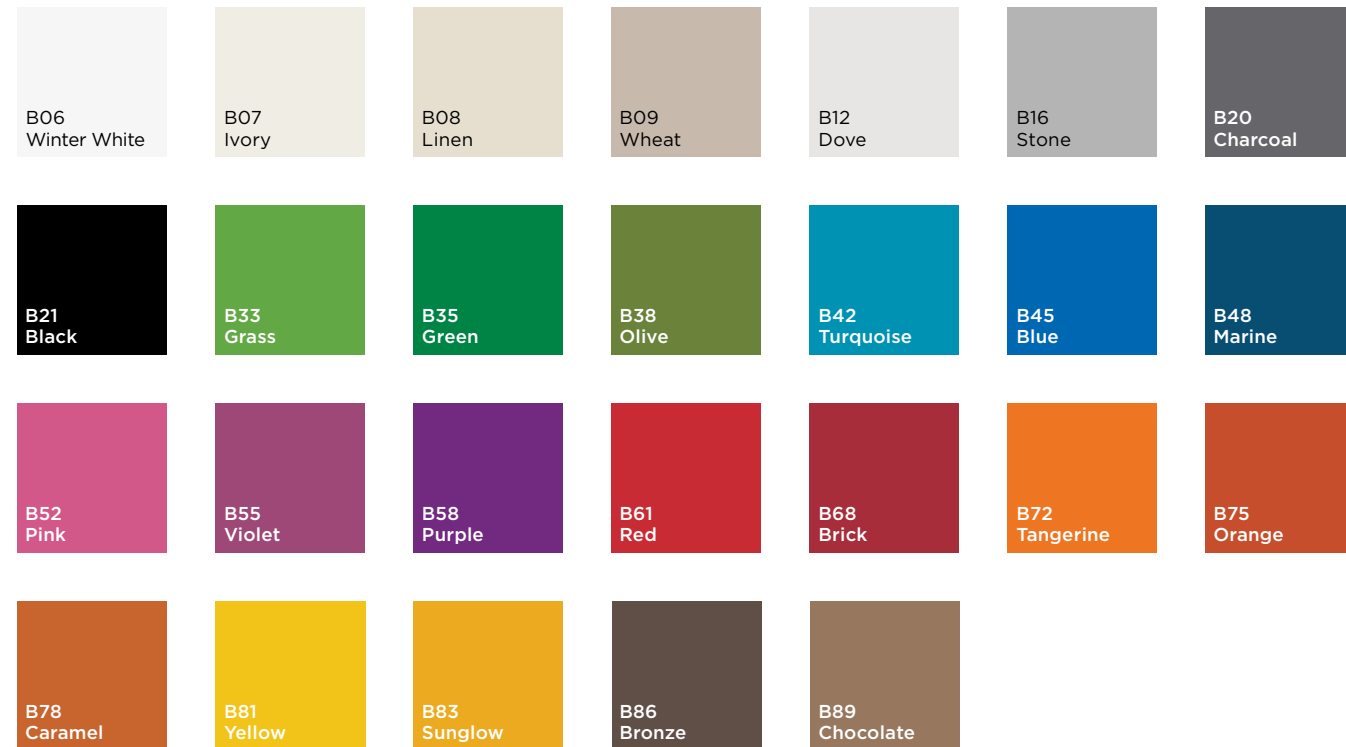
Available in 26 standard colors, other RAL colors may be available subject to approval of samples.

*The colors reproduced in this brochure have been matched as closely as print technology allows.*

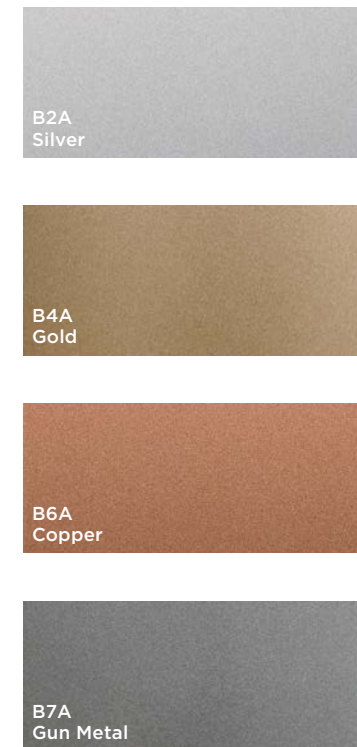
### Hardware Colors

Hardware is available in anodized aluminum.

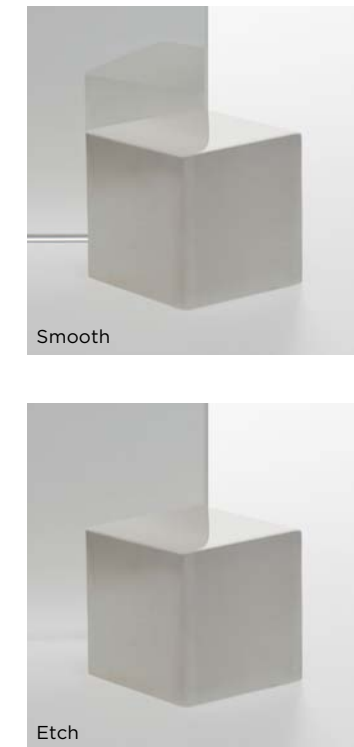
## GLASS



## GLASS (METALLICS)



## GLASS SURFACE OPTIONS



## CHPL (LOCKER DOORS/CUBICLES)



## CHPL BODY (LOCKERS)



## HARDWARE

# Materials

## GRAPHICglass

This product line features our custom print capability which is the best quality in the market. With 1440 dpi clarity and vibrant color hues, your inspiration becomes reality.

From a photograph to digital artwork to a unique pattern, you can express your creativity. Make a statement. Create a mood. Communicate a lifestyle.

## cHPL Wood Finishes

Curated from a classical and historical collection, our cHPL panels are offered in a wide range of "woodgrains."

### GLASS



### cHPL



385



381



1621



626



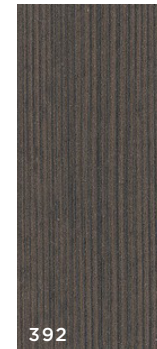
389



391



606



392



524



1354



382



662

# Materials

## Stone

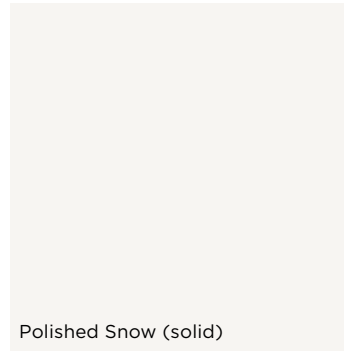
Pale colors and delicate nuances inspired by wet plaster and industrial concrete. Soft materials with a strong contemporary spirit, icons of sophisticated design.

Finishing effects of the porcelain sheets may vary from panel to panel. Sample colors are considered indicative.

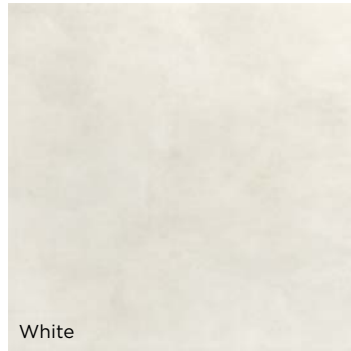
## Marble

By definition, shining metamorphic rocks that diversify in changing energetic veins.

### STONE



Polished Snow (solid)



White



Gray



Dove Gray

### MARBLE (POLISHED)



Calacatta Gold Vein



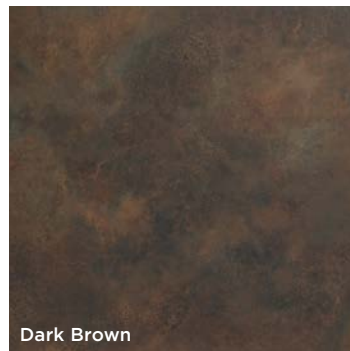
Orobic Gray



Charcoal Gray



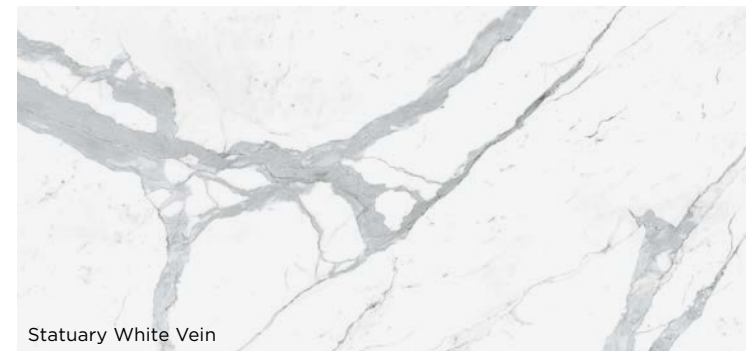
Slate Gray



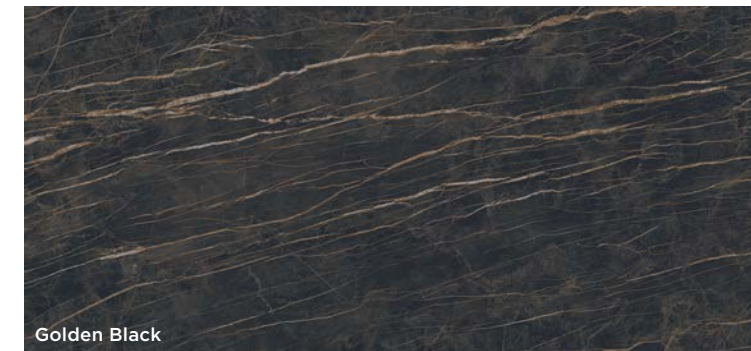
Dark Brown



Black



Statuary White Vein



Golden Black

**Handcrafted Technology**

With unalterable belief, that our stance is the balanced choice to pursue excellence, we work passionately to ensure that every final product can reveal and project the story of Italian design culture and human artisan mastery.

“Handcrafted Technology” is an attitude, where fulfillment is a journey of constant exploration and not a destination. It’s a philosophy and way of life.

Today, we’re proud to function, research, design, continuously upgrade our workforce skills and production by using specially adopted programs, machinery,

and technological solutions bonded with traditional tool elements, which have been formulated, developed and controlled through dedicated work, knowledge and craft experimentation. In this way, we motivate artisan persistence and insist in the “handcrafted final mastery touch” for all stages of our production.

“Handcrafted Technology” predicates that inventive sensitivity and even more, necessity, must honor the final result by merging all human life standards and values with technology and progress.

The information contained in this PDF has been accurately controlled. CARVART and SOEMA are not responsible for any possible inaccuracies and reserves the right to make any technical and aesthetic changes to the products without notice.

